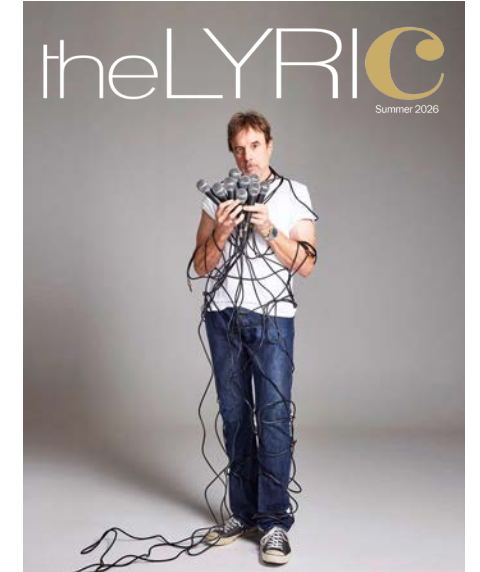


theLYRIC



Summer 2026





On the Cover
As one of the longest running cast members of NBC's *Saturday Night Live*, **Kevin Nealon** creates some of the shows most memorable characters. **September 24 • 7:00pm**



What's Inside

President /CEO Letter	4
Board of Directors & Staff	4
Shout Outs! & Advertiser Index	5
The Dog Days are Coming!	8
2026-27 Season Lineup	24
QR Code: Shows by Genre	26
New Shows Added	28
100 Years of The Lyric	30
Director's Circle & Contributors	36
Membership the "Fast Pass"	40
Perks of Membership	41
Seating & General Information	42
Lyric Legacy: A Society for the Preservation of the Arts	43
Family Fun Series	44
The Lyric's AWESOME! Summer Camp 2026	45
KidTix: Free Tickets for Non-Profit Youth Organizations	46
Support the Arts	47
Our Volunteers	48
Theatre for Rent	51

President / CEO

Kia Fontaine

Board of Directors

Sharon Holt
Chair

George F. Bellows
Vice Chair

Harold W. Walsh
Treasurer

Linda Weiksnar
Secretary

Directors
Todd Laycock
Kristofer Lyon
Msebenzi Masondo
Eileen D. Morris

Chair Emerita
Ethel Christin

Artistic Director Emeritus
John Loesser

Lyric Theatre Staff

Controller
Monica Soricelli

Development Director
Heather Long

General Manager
Brandon McAllister

Marketing Director
Moises Miguel

Director of Box Office Services &
Arts & Education Coordinator
Sue Nauss

Assistant to Director of
Box Office Services
Lori Maxwell

Box Office Associates
Janet Church
Cathy Collins
Zahria Gainey
Sharon Horton
Octalie Lovinsky
Wendy Lucas

Technical Director
David Jacobs

Art Director
Michael Renfro

Accounting
Kellie Jocoy

Volunteer Manager
Terri O'Connell

House Managers
Heidi Condon
Jill Kober
Terri O'Connell
Linda Lambrecht
Phyl Weaver

Security
Jimmy Egan
Tom Wiegierink

Copywriter & Creative Services
Shelley Koppel

Legal Advisors
Terence P. McCarthy
and Owen Schultz

Celebrating 100 Years of Community, Connection & Creativity



Dear Friends,

As summer arrives and we prepare to unveil a new season, we are also celebrating a remarkable milestone: **100 years of The Lyric.**

For a century, The Lyric has been more than a stage. It has been a gathering place where stories come to life, friendships are formed, and the arts strengthen the bonds that unite our community. This anniversary is not only a celebration of our history, it is a celebration of the people who have made that history possible.

Over the past 100 years, The Lyric has been built on three enduring values: **community, connection and creativity.**

Community, because our impact extends far beyond our own productions. The Lyric has long served as a home for fellow nonprofit organizations hosting outreach programs, fundraising events, and community gatherings. We are also proud to provide a stage for local dance companies and the young performers whose talent and dedication inspire us all.

Connection, because the performing arts bring people together in meaningful ways, creating shared experiences that inspire conversation, foster understanding, and strengthen the bonds between us.

Creativity, because imagination is at the heart of everything we do. The Lyric provides a space where creativity can flourish, new ideas can take shape, and extraordinary stories can be shared.

As we honor our past, we are equally excited about the future. The season announced in this issue is just the beginning of an extraordinary centennial year. In the months ahead, we'll unveil even more performances and special events—from rising stars to nationally recognized headlining acts.

We invite you to stay connected as new announcements are made and join us in celebrating this landmark year.

To everyone who has been part of The Lyric's story, thank you. Your support has shaped our first 100 years and will help guide us into the next century.

The first chapter of our next 100 years begins with this season.

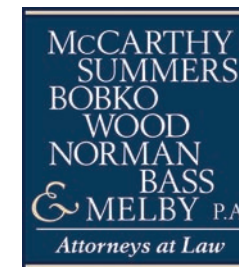
With gratitude,

Kia Fontaine
President / CEO

The Lyric Theatre's Mission "To provide the community with a home for the performing arts that entertains, educates, and stimulates the growth of artistic integrity and experience for everyone."

SHOUT OUTS!

Friends of the Lyric would like to thank our partners.



S O C I A L



Advertiser Index

Allengang Entertainment	7
The Barn Theatre	50
Carr, Riggs & Ingram	6
DrummersOnly Drum Shop	6
The Estate Trust and Elder Law Firm	51
The Gafford	52
MartinArts	50
Martin Fence Company	6
Palm City Social	52
Panthera Publishing	6
Patty Downing Interiors	6
Stuart Main Street Market on Main	46

Support Our Supporters

The Holt Family Foundation
We couldn't do it without you.

PDI
Patty Downing
INTERIORS

Timeless Design for Beautiful Living

Find us on:
 Instagram: @pattydowninginteriors
 Facebook: Patty Downing Interiors

3770 SE Ocean Blvd,
 Stuart, FL 34996
 (772) 288-2122

DRUMS ~ PERCUSSION ~ INSTRUCTION

DrummersOnly Drum Shop

South Florida's Only Music Store between Miami and Orlando devoted to Drums and Percussion Instruments

We Buy, Sell, Rent and Repair All Drum and Percussion Equipment. All Major Brands

- Drum Lessons
- Drum and Percussion Ensembles
- Piano Lessons
- Mallet Keyboards
- New, Pre-Owned and Vintage Drum & Percussion equipment

1532 SE Village Green Dr.
Port Saint Lucie
772.337.4002
www.drummersonly.com

GROWING BUSINESSES
Audit • Tax • Consulting

CRI CARR RIGGS & INGRAM

CRI STUART
 33 SW Flagler Ave.
 Stuart, FL 34994
 772.283.2356

Top 25 Accounting Firm | CRIadv.com

* Assurance, attest, and audit services provided by Carr, Riggs & Ingram, L.L.C.
 "CRI" is the brand name under which Carr, Riggs & Ingram, L.L.C. ("CPA Firm") and CRI Advisors, LLC ("Advisors") and its subsidiary entities provide professional services. CPA Firm and Advisors (and its subsidiary entities) practice as an alternative practice structure in accordance with the AICPA Code of Professional Conduct and applicable law, regulations and professional standards. CPA Firm is a licensed independent CPA firm that provides attest services to its clients, and Advisors and its subsidiary entities provide tax and business consulting services to their clients. Advisors and its subsidiary entities are not licensed CPA firms.

Panthera Publishing

If You've Spoken It, Taught It, Lived It ... Let Us Publish It!!

Contact us today!

- Audio-Video Transcription
- Printing & Publishing
- Editing & Formatting
- Custom Book Design

PantheraPublishing.com Pgarner@PantheraPublishing.com
 (772) 497-6001
 Use YOUR voice to create powerful books that speak long after you do

MARTIN FENCE CO.
 SINCE 1979

"For All Your Fencing Needs"

877-777-3212
 www.martinfence.com

Allegang Entertainment

True Rumours
 FLEETWOOD MAC TRIBUTE

JUL 18, 2026 • 7pm

GET READY
 Old School Motown

AUG 14, 2026 • 7pm

VINYL RECORDS LIVE PERFORMING
 Blondie
 Parallel Lines

OCT 9, 2026 • 7pm

VINYL RECORDS LIVE PERFORMING
 EAGLES
 when hell freezes over

JAN 8, 2027 • 7pm

Orlando Transit Authority
 a Chicago tribute band

JAN 20, 2027 • 7pm

SOLITARY MAN
 Tribute to Neil Diamond
 Featuring David Jericko and The Crew

FEB 2, 2027 • 7pm

VINYL RECORDS LIVE PERFORMING
 Bob Seger
 Night Moves

FEB 17, 2027 • 7pm

VINYL RECORDS LIVE PERFORMING
 BOSTON'S
 1976 Boston Album

MAR 11, 2027 • 7pm

VINYL RECORDS LIVE PERFORMING
 The Doobie Brothers
 The Captain and Me

APR 30, 2027 • 7pm

The Dog Days are Coming!

Things are heating up at The Lyric with more summer shows and the announcement of our 2026-27 Season, sure to be the biggest ever!



Mutts Gone Nuts
Mutts, Magic & Mayhem!
January 30 · 3:00pm & 6:00pm



The Artimus Pyle Band September 20 · 7:00pm
Honoring the music of Ronnie Van Zant's Lynyrd Skynyrd and culminating into one of the finest tributes to southern rock royalty.



Edwin McCain October 7 · 7:00pm
The American singer-songwriter and guitarist topped the charts with his hits "I'll Be" and "I Could Not Ask for More" and was dubbed a Great American Romantic by The New York Times.



Kevin Nealon September 24 · 7:00pm
As one of the longest running cast members on NBC's Saturday Night Live (1986-1995), Nealon created some of the show's most memorable characters; his recurring role as an anchor on 'Weekend Update' helped make the sketch a show staple.



Acoustic Alchemy October 30 · 7:00pm
For over three decades the band has been at the forefront of contemporary jazz with their signature eclectic mix of styles.



Firefall November 6 · 7:00pm
Defying industry labels, they melded country, folk, easy listening and rock 'n' roll helping to define a generation and forever changing the landscape of contemporary music.



Photo: Victoria Smith

Coco Montoya November 7 · 7:00pm
 Montoya's endlessly inventive guitar work and passionate, hard-hitting vocals have kept him at the top of the blues world.



Leslie Jones: I'm Hot Tour November 22 · 7:00pm
 The prominent American stand-up comedian, actress and writer is known for her fearless and observational comedic style.



Atlanta Rhythm Section November 8 · 7:00pm
 From their start as the house band at the famed Studio One, to playing for tens of thousands of fans at festivals and arenas, Atlanta Rhythm Section earned their place as one of the top acts in country rock.



Photo: Chyrisse Tabone

Mindi Abair's I Cant Wait for Christmas December 9 · 6:00pm & 8:30pm
 Join Mindi for an unforgettable evening of holiday music featuring Xavier Gordon, Rebecca Jade, Andréa Lisa, Arthur Thompson and Daryl Williams.



Gravity
The Ultimate
Tribute to Diva
Powerhouses

January 7 · 7:00pm

Gravity will take you on a musical journey, giving you a rare insight into the world of show business. Transporting you back in time to pay homage and showcase music from legends such as Donna Summer, Aretha Franklin, Cher and many more.

The Kingston Trio

January 11 · 7:00pm

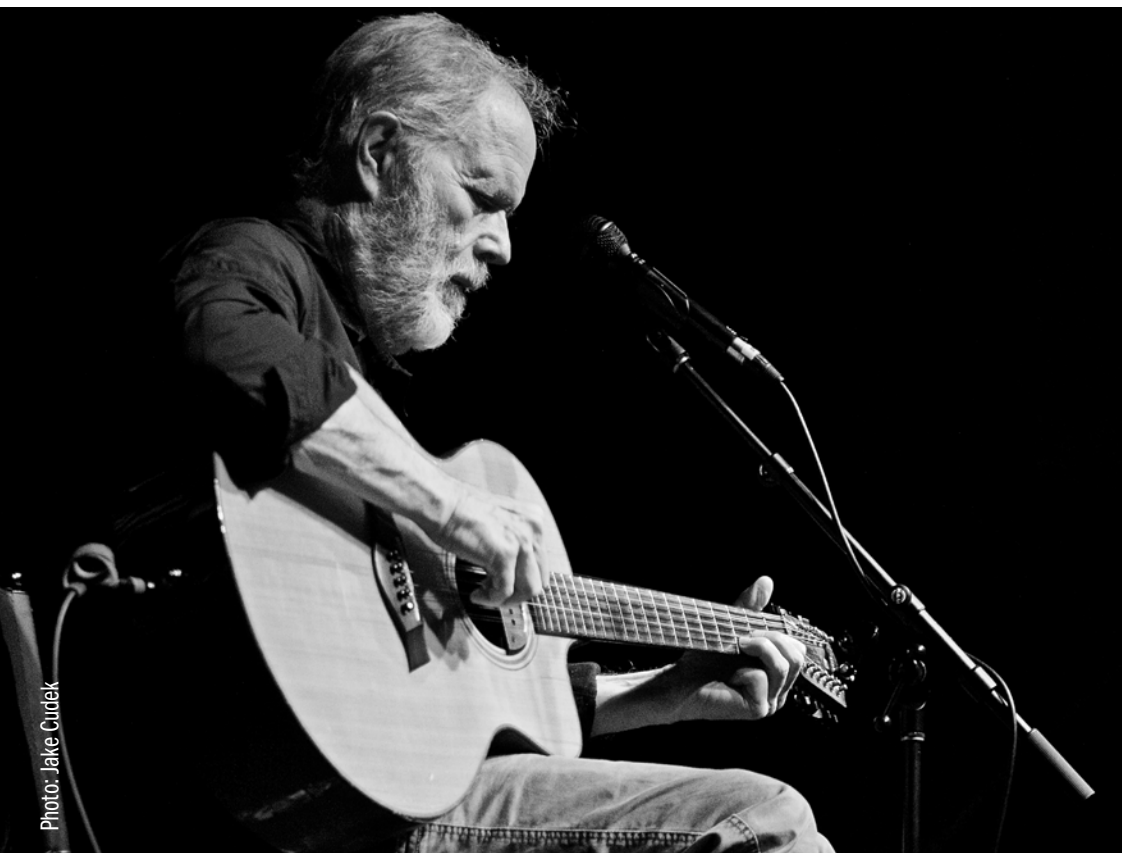
With their unique sound and rich tradition of American folk music, the Trio quickly rose to fame during the late 50s and early 60s, influencing the musical tastes of a generation.



The Dionne Legacy
The Heart and Soul
of Dionne Warwick

January 12 · 7:00pm

Prepare to be transported into the unforgettable world of Dionne Warwick. Lorraine Brown pays tribute to the catalog of Dionne's hits that made her a household name.



Leo Kottke

January 9 · 7:00pm

The accomplished acoustic guitarist is known for a fingerpicking style that draws on blues, jazz, folk music and for syncopated, polyphonic melodies.

Rick Skaggs &
Kentucky Thunder

January 14 · 4:00pm & 7:00pm

Fifteen-time Grammy Award winner Ricky Skaggs is one of the most influential figures in modern country music, preserving and advancing the bluegrass tradition, sharing its rich legacy with audiences around the world.



Photo: Jake Cudek

Come What May January 19 · 7:00pm

Experience a night of pure entertainment as we transport you to the dazzling world of the Moulin Rouge! This incredible show features all your favorite hits from the iconic movie as well as timeless hits from other modern movie musicals.



ABBAcadabra: The Ultimate ABBA Tribute January 26 · 6:00pm & 8:30pm

A journey back to when disco was king!



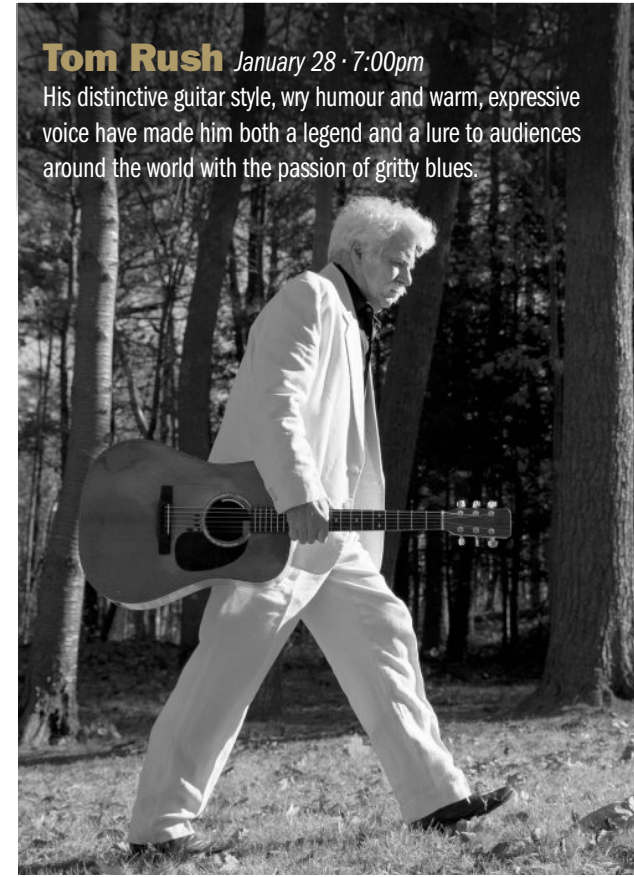
Bucky Heard of The Righteous Brothers presents Unchained Melodies January 25 · 7:00pm

This fast-paced show features timeless classics from The Righteous Brothers vast catalog alongside soulful melodies throughout the decades! Bucky Heard holds audiences spellbound as they relive golden memories from their lives.



Tom Rush January 28 · 7:00pm

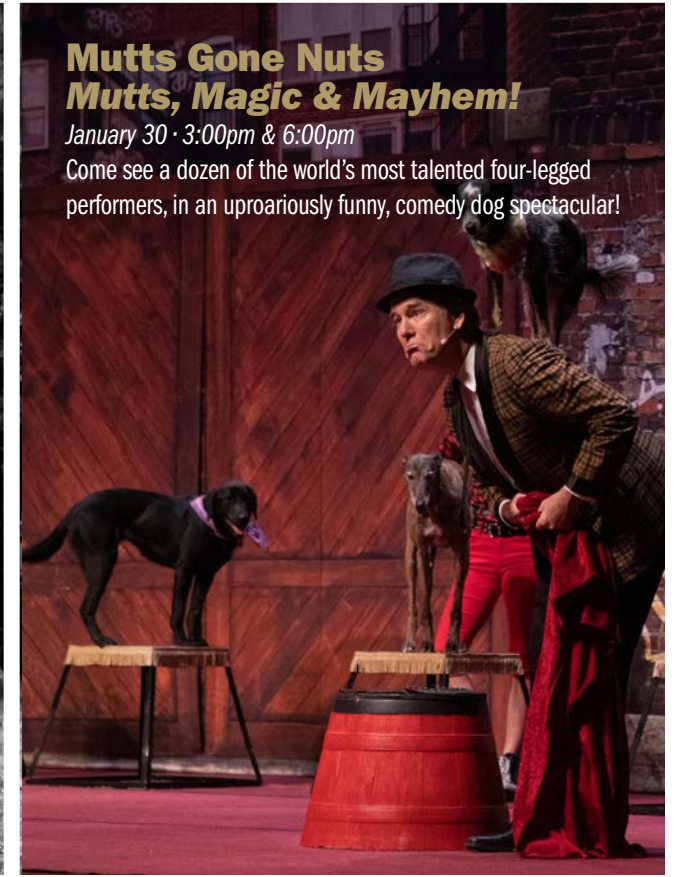
His distinctive guitar style, wry humour and warm, expressive voice have made him both a legend and a lure to audiences around the world with the passion of gritty blues.



Mutts Gone Nuts
Mutts, Magic & Mayhem!

January 30 · 3:00pm & 6:00pm

Come see a dozen of the world's most talented four-legged performers, in an uproariously funny, comedy dog spectacular!





Forever Tango

February 1 · 7:00pm

Tells the story of the birth of tango in 19th century Argentina featuring an all-Argentine cast that traces the colorful history of the tango through music, dance, song and dramatic vignettes.

Honky Tonk Chicks

February 4 · 7:00pm

Dust off your cowboy boots for the ultimate Country Music experience! From today's Top 40 to country classics, this trio takes you on a ride through their favorite songs.



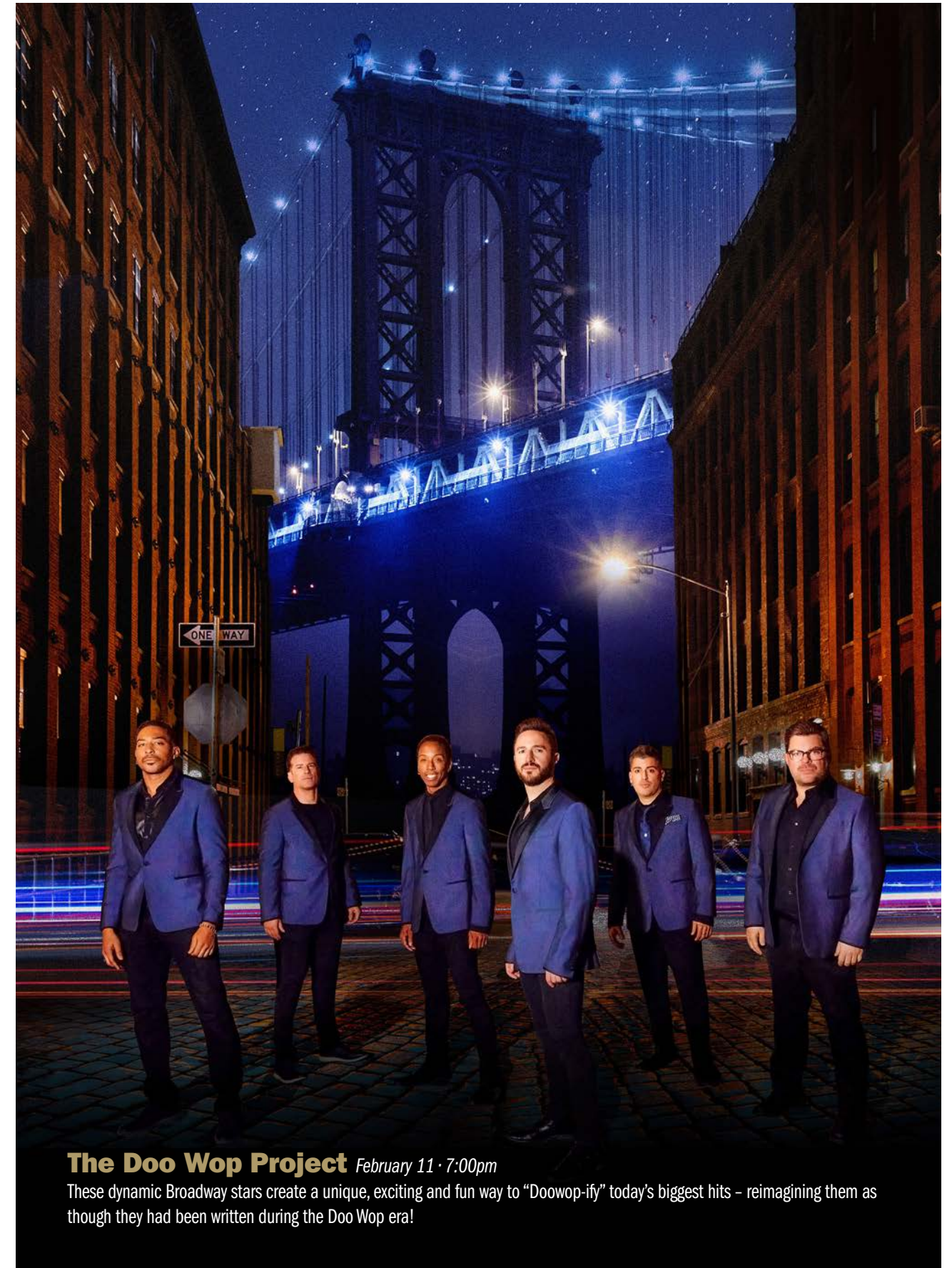
Tommy Castro and the Painkillers

February 7 · 7:00pm

Get Down On It The Ultimate 70s Experience

February 9 · 7:00pm

Fronted by the incredibly talented Keni Jackson, Get Down On It pays homage to the bullet proof funk that was Kool and the Gang.



The Doo Wop Project February 11 · 7:00pm

These dynamic Broadway stars create a unique, exciting and fun way to "Doo-wop-ify" today's biggest hits - reimagining them as though they had been written during the Doo Wop era!

The Bronx Wanderers

February 16 · 4:00pm & 7:00pm
Buckle your seat belts because The Bronx Wanderers deliver a “Back to the Future” type of rocket fuel in a high-octane 50s, 60s and 70s Rock N’ Roll experience!



Vanessa Collier

February 20 · 7:00pm
With soulful vocals, searing saxophone and witty songwriting, Vanessa Collier weaves funk, soul, rock and blues into every powerful performance.



The Dream Concert Celebrating the Music of Paul Anka and Bobby Darin

February 24 · 7:00pm
Welcome to the world of timeless melodies and unforgettable performances! Immerse yourself in an extraordinary show that celebrates the music and legacies of two iconic artists.



Stayin’ Alive A Tribute to the Bee Gees

February 26 · 6:00pm & 8:30pm
This quintessential tribute band captures the excitement of live performance and the tender subtleties of the human voice.



Jesse Cook

March 6 · 7:00pm
With his innovative blend of flamenco, classical, jazz and world beat, Jesse Cook creates a musical tapestry that is both timeless and cutting-edge.



Go Now! The Music of The Moody Blues The Tribute

March 8 · 7:00pm
Gordy Marshall (The Moody Blues) along with Mick Wilson (10cc), have brought together some of the very best singers and instrumentalists in the country to create the ultimate tribute to the greatest classic rock band of a generation.





The Music of Billy Joel and Elton John starring Michael Cavanaugh

March 10 · 7:00pm — Handpicked by Billy Joel to star in The Broadway musical Movin' Out, Cavanaugh evokes a style rivaling the Piano Man himself.



Photo: Jeff Fasano

Paul Thorn March 20 · 7:00pm

An American Southern rock, country, Americana and blues singer-songwriter, whose style is a mix of blues, country and rock.



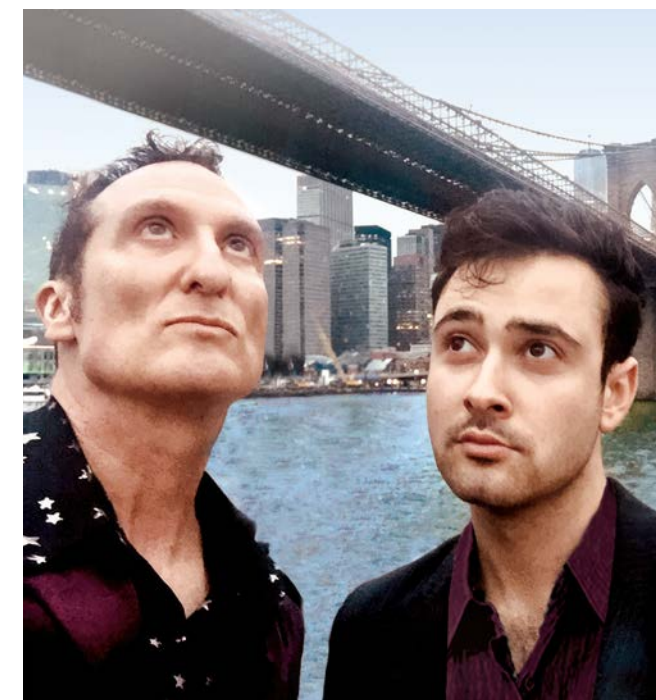
Neil Berg's 50 Years of Rock & Roll Part 4 March 18 · 7:00pm

Neil Berg returns with an all-new show featuring stars from Broadway's greatest rock musicals backed by an all-star band. Neil will share the often-unknown stories from the history of the music that changed the world.



Sensational Soul Cruisers

March 22 · 7:00pm — Fronted by four soulful vocalists blending old-school soul with a modern twist, this group delivers the ultimate soul experience!



Forever Simon & Garfunkel

March 24 · 7:00pm — This acclaimed tribute show featuring Sean Altman and Jack Skuller performing the iconic folk-rock duo's hits with "laser-precise" harmonies and storytelling.



The Boulevards March 25 · 7:00pm

Relive the magic of the 1950's with The Boulevards, a dynamic rock and roll band that flawlessly recreates the iconic hits from the golden era of music.



Henhouse Prowlers March 26 · 7:00pm

Founded nearly two decades ago with the simple desire to play original and powerful bluegrass, this Chicago-bred quartet now finds themselves at the intersection of performance, diplomacy and education.



Bassel & the Supernaturals

April 3 · 7:00pm

Bassel & The Supernaturals blend neo soul, funk and jazz-infused R&B with lyrics of love and loss. Expect a night of soulful grooves and powerful vocals.

Jethro Tull's Martin Barre
The Plugged In and Ready 2027 Tour

April 4 · 7:00pm

Martin Barre, the center of Tull's unique sound renowned for his formidable mastery of historic riffs, power chords and soaring melodic solos celebrates the musical journey of Jethro Tull throughout the decades.

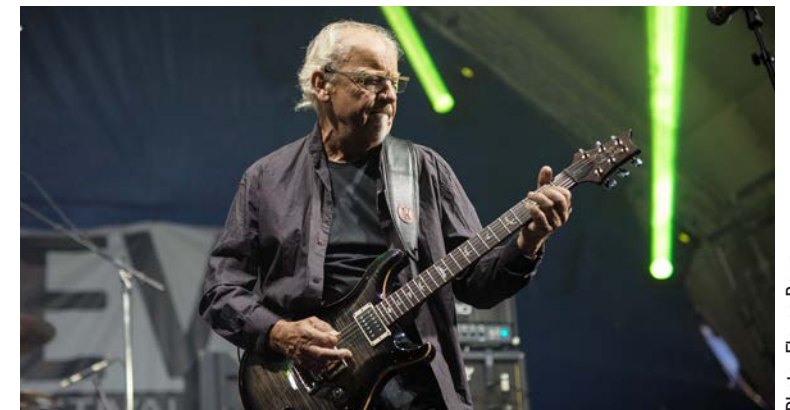


Photo: Elayne Barre



The Fabulous Thunderbirds
A Tribute to Chicago Blues

April 8 · 7:00pm

The tribute to Chicago Blues, led by harmonica virtuoso Kim Wilson celebrates the electric blues style featuring a mix of classic blues, deeper cuts and band hits.

Young Dubliners

April 17 · 7:00pm

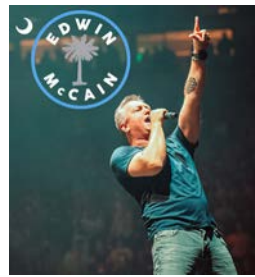
For over 30 years, The Young Dubliners have been one of the world's leading Irish-American Rock bands, known for bending Irish folk songs fused with Rock and their original Rock compositions.



Photo: kBishop

26 27

the LYRIC



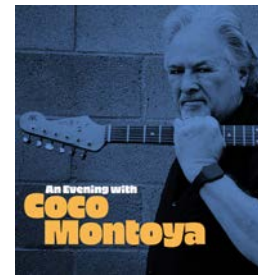
OCT 7



OCT 30



NOV 6



NOV 7



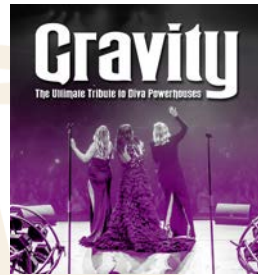
NOV 8



NOV 22



DEC 9



JAN 7



JAN 9



JAN 11



JAN 12



JAN 14



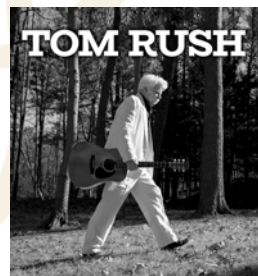
JAN 19



JAN 25



JAN 26



JAN 28



JAN 30



FEB 1



FEB 4



FEB 7



FEB 9



FEB 11



FEB 16



FEB 20



FEB 24



FEB 26



MAR 6



MAR 8



MAR 10



MAR 18



MAR 20



MAR 22



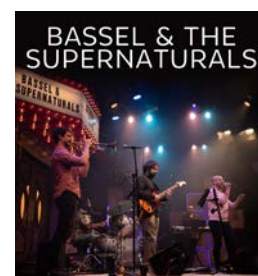
MAR 24



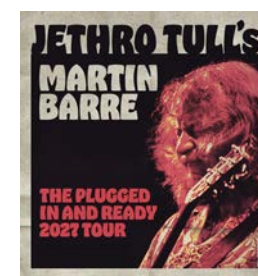
MAR 25



MAR 26



APR 3



APR 4



APR 8



APR 17

ON SALE NOW TO MEMBERS. BECOME A MEMBER TODAY! ON SALE TO PUBLIC SEPTEMBER 8TH AT 12:01 AM



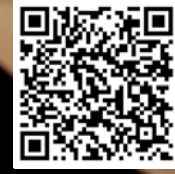
ALL SHOWS



FAMILY FUN



JAZZ & FUNK



MUSICAL THEATRE



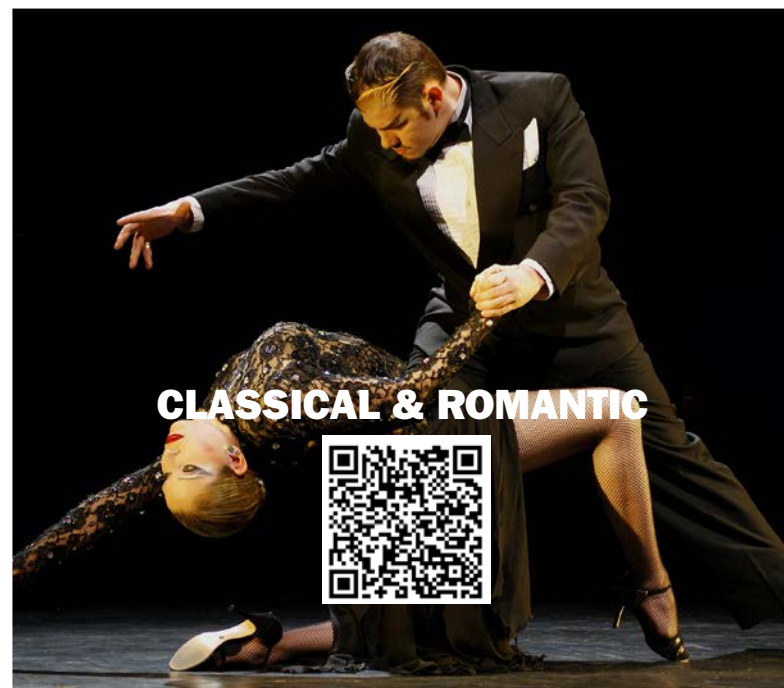
FUNNY BUSINESS



26
27

LYRIC
the

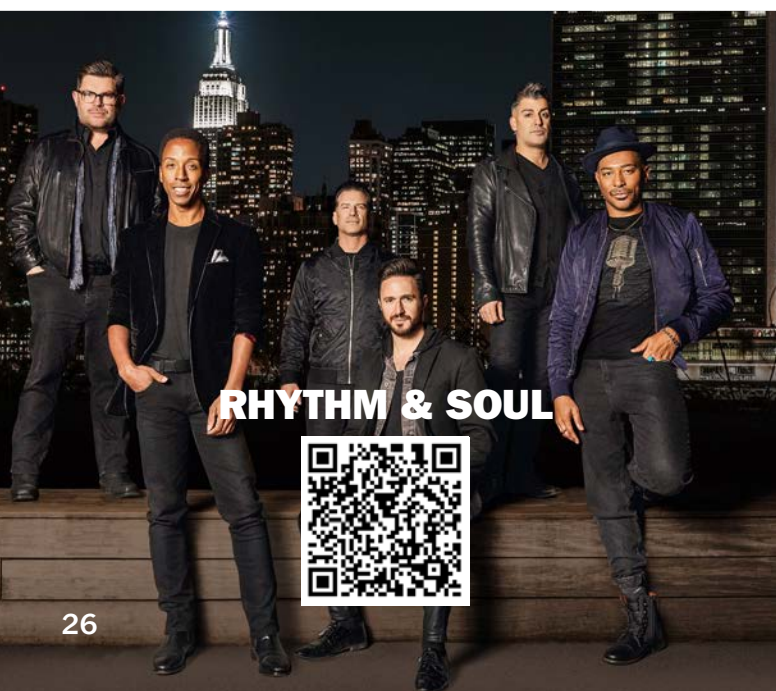
Scan QR code to choose your favorite genre and stay updated with new and added shows to The Lyric's Season.



CLASSICAL & ROMANTIC



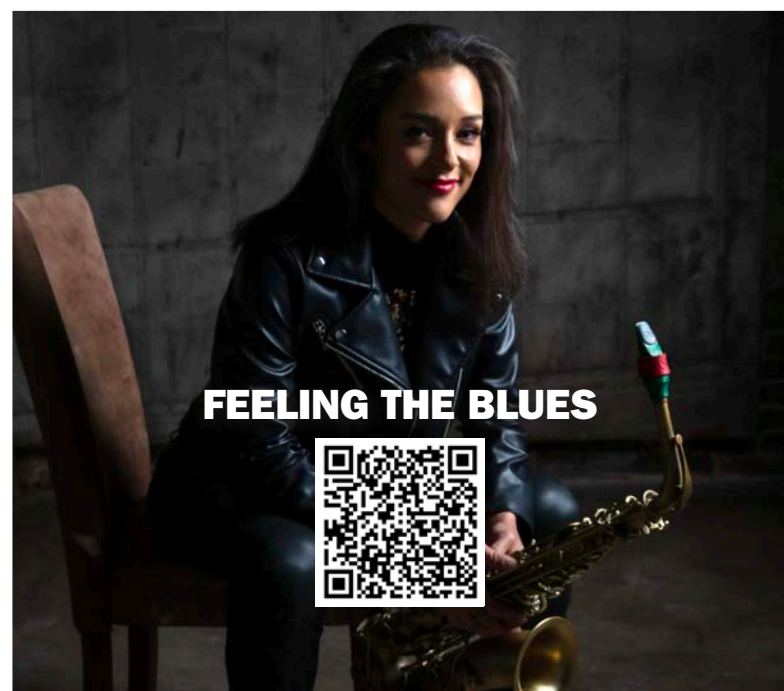
ROCK & ROLL



RHYTHM & SOUL



AMERICANA & FOLK



FEELING THE BLUES



COUNTRY & GRASS





Edwin McCain

October 7 · 7:00pm

The American singer-songwriter and guitarist topped the charts with his hits “I’ll Be” and “I Could Not Ask for More” and was dubbed a Great American Romantic. by The New York Times.



Tommy Castro and the Painkillers

February 7 · 7:00pm

The multiple award-winning guitarist and vocalist, Tommy Castro has captivated audiences with his soul-drenched vocals, searing guitar work and high-energy live shows with a wide stylistic range—from horn-driven R&B and hot-blooded soul to gritty, stripped-down rock and electric blues.

NEW SHOWS **ADDED**



Rick Skaggs & Kentucky Thunder January 14 · 4:00pm & 7:00pm

Fifteen-time Grammy Award winner Ricky Skaggs is one of the most influential figures in modern country music, preserving and advancing the bluegrass tradition, sharing its rich legacy with audiences around the world.

Tom Rush January 28 · 7:00pm

His distinctive guitar style, wry humour and warm, expressive voice have made him both a legend and a lure to audiences around the world with the passion of gritty blues.



Paul Thorn

March 20 · 7:00pm

An American Southern rock, country, Americana and blues singer-songwriter, whose style is a mix of blues, country and rock.



Photo: Jeff Fasano



Photo: kBishop

Young Dubliners

April 17 · 7:00pm

For over 30 years, The Young Dubliners have been one of the world’s leading Irish-American Rock bands, known for bending Irish folk songs fused with Rock and their original Rock compositions.

100 years...

Weaving together the history of The Lyric Theatre over the past 100 years is a story of community, connection & creativity. A community that joined together to support and save this historic treasure is our story. The thriving Lyric we now know is a testament to our Community.



1913 The Stuart Times printed on its first page an article telling of the plans of JC "Judge" Hancock for his "new" theater. The first Lyric was built on Osceola Avenue near Belle Flora what is now Colorado Avenue.



March 15, 1926 The Lyric opened its doors with a special presentation featuring an overture by Mrs. Hancock on the pipe organ and screening of *Skinner's Dress Suit*. With so much excitement from the community, The Lyric was packed to capacity, and large numbers of people were turned away. The Stuart Daily News reported, "Judging from the attendance at the theatre, The Lyric is going to be a mighty popular place. It is indeed an ideal playhouse and one that every resident of Stuart might well be proud of."



1930 Newly equipped with a RCA Photophone sound picture machine, *Danger Lights* was screened as the first "talkie." Admission was 20 cents for the 7:00 pm show and 40 cents for the 8:30 pm show.



1941 Katharine Hepburn recited Edna St. Vincent Millay's "The Harp Weavers" as part of the annual Kiwanis Minstrel show at The Lyric.

1956 Greene's Dry Goods expanded into the space next door, formerly occupied by the Lyric Pharmacy, for its shoe department.



1957 Six refugees from Hungary brought to Stuart by the Catholic Relief Services in front of a Taxi Company housed in the Lyric storefront.



1914 Stuart's first theater opened its doors for its first performance. The auditorium was forty feet square with a seating capacity of 250 people. With no electricity in Stuart, the theater had its own dynamo and gasoline engine and made its own electricity.



1917 The Lyric was moved to the little wooden structure on Osceola Avenue. C. Frederick "Fred" Hancock (JC Hancock's son) was called away to the service to serve in the war, ending the motion pictures for Stuart.



1925 Built as a silent movie house with a small stage for Vaudeville acts, The Lyric was the largest building in Martin County. It was built for \$100,000 by Judge John Hancock and his wife, Mamie. The Lyric Building, as it was called, had a 900-seat theatre and featured retail storefronts, including Bailey's Drug Store with an eleven-foot-long soda fountain counter. Ventilation in the Lyric Theatre building was the most modern available, known as the Arctic Nu-Air system.



1925 The Lyric under construction during a parade for Governor Martin as part of the celebration of the establishment of Martin County.



1936 The Hancocks fell on hard times during the Great Depression and sold The Lyric to the bank.

1937 Over the following years, The Lyric was leased out to the Sparkes Theater chain and various community groups to present traveling vaudeville shows, news weeklies, and movies.



1949 People line Flagler Street to watch the Fourth of July parade.



1950s





1978 The Lyric was purchased by the New Life in Christ Church, which used the theatre for weekly worship services. By 1987, the church wanted to move, and the theatre was put up for sale.



1988 Friends of the Lyric purchased the building from the New Life in Christ Church at purchase price of \$300,000, with a \$5,000 deposit required to finalize the contract. Roy Laycock went door to door seeking out ten \$500 donors, and within 24 hours, the funds were raised.

1989 Friends of the Lyric became a 501(c)(3) not-for-profit organization.

1993 The Lyric Theatre was listed on the National Register of Historic Places.



1996 New Orchestra seating was installed and administrative offices constructed.

1999 A vacant lot to the north of The Lyric was purchased for a future expansion of the stage and backstage areas.

2004 Many rummage sales and fundraisers were held on this lot to raise funds for the expansion and in 2004, the project began with support and commitment from donors, patrons and community partners.

1987 The Lyric was put up for sale. Seen as an anchor and much needed entertainment center, Roy Laycock entered into a contract to purchase the building. Believing the community should own The Lyric, Roy gathered a group of people with fundraising and operational backgrounds to ignite and support his vision.



LIKES THE LYRIC

Old theater may go back to show biz
Building could become entertainment center

By JILL TAYLOR
Palm Beach Post Staff Writer

STUART—The old Lyric Theater in downtown Stuart has provided the stage for sermons and hymns for the past seven years, but if there is enough community interest, it soon could feature live performances, lectures and film festivals.

New Life in Christ Church, which bought the theater in 1980, has agreed to sell the building to a local group interested in forming a non-profit corporation to run the theater as a community meeting place and entertainment center. If the group can raise the \$300,000 asking price by the end of January.

"We do not have an adequate public meeting place, and we need it," said Realtor Roy Laycock, who served as a

day care and a Bible college have outgrown the facilities at the Lyric.

"This form does not follow our function. We need more space," he said. "I don't believe there's any doubt the community will get behind this (the purchase of the theater)."

Laycock said the group will spend the next couple of months organizing the fund-raising effort and deciding who would operate the Lyric if the purchase goes through and exactly what the community wants to do with it.

The theater on Flagler Avenue was built in the 1920s by J.C. and Mamie Hancock after their first Stuart movie house, about a block away near Haney Circle, burned down, said Hancock's granddaughter, Pat Benson.

The theater, with an original seating capacity of about 700, provided the pri-

new sound equipment they needed for the films, Benson said.

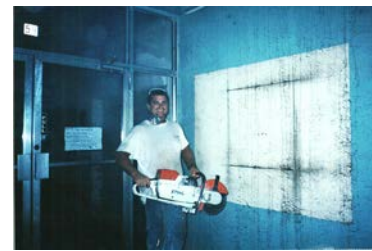
The Great Depression in 1929 left few people with even a spare nickel or a dime to spend on anything as non-essential as movies, and after a few more years, the Hancocks were unable to make their mortgage payments and lost the theater.

"They held up for as long as they could," said Benson, who recalled that her father, C.F. Hancock, was offered the job of manager of the theater under new ownership.

The theater, with its blue cushioned seats, red carpeting and blue walls, continued showing films and featuring a few live performances through the 1960s, including a production of the musical *Hair*, which was preceded by a bolt of lightning that hit the building.

New Life in Christ, which Blake described as a non-denominational, independent organization, purchased the

1991-1995 With grant funding from the State of Florida, National Endowment for the Arts and local community funding and support, The Lyric underwent needed stabilization and repair: new roof and air conditioning systems, ADA Compliance alterations, Box Office construction, marquee improvements and remodeling of the lobby, restrooms and dressing room.



2001 The balcony of the theater was remodeled for the installation of new balcony seating, an elevator was installed and refurbishment of the lobby and restrooms.





2005 The Lyric expansion was completed, enlarging the stage 16 feet and adding a backstage equipped with a restroom and office/storage areas.



The Lyric Theatre was built in 1926 to show silent films, and "was never designed for more than a juggler and a comedian," says John Loewer.

Expansion made possible by acquisition of vacant lot

BY LYRIC STAFF

For regional arts groups, including the Treasure Coast Conservatory Orchestra, Shula Theatrical Productions, Peter Jones Productions and Florida Arts and Theatre Company...

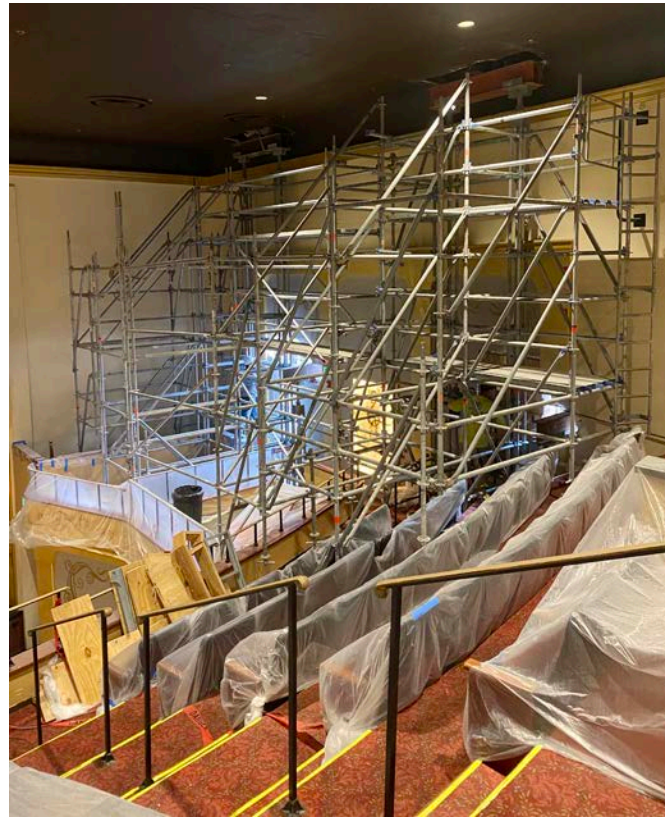
Most of the modifications won't be obvious to Lyric patrons, but there are significant ones. By buying a vacant lot connected to the theater, the Lyric was able to add a crucial 22 feet of depth to its stage and completely red dress the backstage, creating more storage space and a reception area with kitchen facilities, plus additional offices for the theater's staff.



The dressing room at the Lyric is a huge improvement over previous arrangements, where artists were forced to shower in a nearby hotel and suitcases change in the street outside.

For the Lyric, which already has become an incredibly ambitious presence, it opens up a whole new world of backstage opportunities. Not only will the theater be able to host performances without making excuses in advance, it will also be able to present bigger — and more technically complex — shows with video projections and other scenic elements. Loewer plans to use another example: the modern dance troupe "Theobalds," a group whose easy, prop-filled productions have enormous popular appeal.

By the way, the Lyric, which must also balance a \$750,000 annual budget, has been able to make its case to a broad pool of more than 800 donors at smaller contribution levels. The largest single contribution was \$200,000. And Loewer, the son of Broadway music legend Frank...



October 1, 2021
The Lyric reopened.

2014 The Lyric was closed for substantial renovation as part of the *Love The Lyric* Capital Campaign. The campaign resulted in substantial renovations to the lobby and box office, new exterior and interior entrances, new orchestra seating, new sound system and architectural elements were added to the walls and columns.



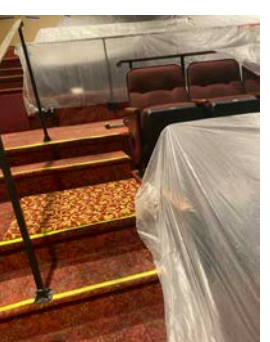
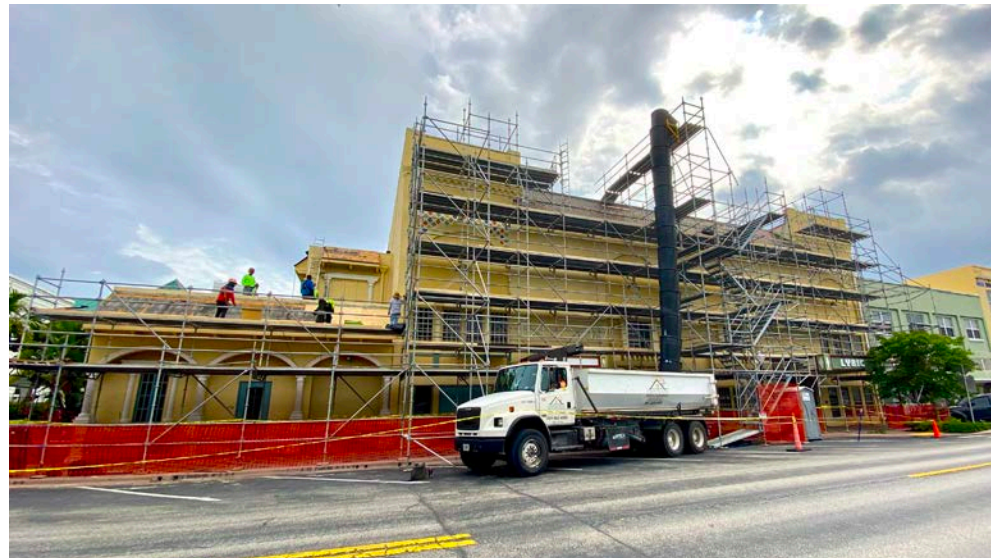
March 2020 The Lyric was shuttered due to the COVID-19 pandemic. Enough funds had been saved to perform critical building repairs and maintenance. The project, though extremely essential to the preservation had to be put on hold.

2015-16 The Lyric's proscenium was ornamented in an Art Nouveau style. The elegant design, artistry and craftsmanship of the trompe l'oeil art technique were added throughout The Lyric including the balcony parapet, doorway transoms and interior theatre walls.



2021 With amazing community support for *The Next Act* Capital Campaign, The Lyric underwent critical structural and building renovations including substantial structural column and beam replacement/repairs, new roof, new air conditioning units and restoration of the marquees.

March 2021
The Lyric had been closed for one year.



2026 The Lyric celebrates 100 years of community, connection & creativity. Here's to her future...

Director's Circle

The following donors have generously committed to providing sustained support of The Lyric over a five-year period as part of the Director's Circle program:

Bonnie & Wayne Barski	The Lichtenberger Foundation
Robert P. Bauman	Kristofer & Melanie Lyon
Joseph & Theresa Beditz	Bob & "Ralf" Massey
George F. Bellows & Deborah J. Dodge	Wayne & Lianne Maxson
Anita Brush & Dr. Ron Yedloutschnig	Katherine McGovern
Frank M. Byers Jr.	Eileen Morris & Bob Griffin
Don & Becky Campagna	Dr. & Mrs. Edward Overfield
Ethel Christin	Gene & Rilla Pfothenhauer
Susan & Michael Copperman	Janet Prindle Seidler
Mary Laub Cowan	Douglas & Carol Rearick
Bill & Audrey Crandall	The Rev. & Mrs. David A. Rich
Bob Crandall & Ellyn Stevenson	Victor & Joan Rivas
Anthony & Ingrid DeLuca Family	Ken & Sally Schaeffer
Bill & Cassandra Dittmar	Rabbi Dannel Schwartz & Suzi Romanik
Sherry Dunn	Bruce Scott & Michele Bragg
Stephanie Flicker & Peter Freudenberg	The Sear Foundation
Kia Fontaine & Luca Bradley	Sherrri & Geoff Seiber
David M. Gallus	Wm. & Fran Slat
Paul & Annette Gartzman	Earl & Sharon Smith
The Howard Gilman Foundation	May Smyth
Rev. Allardyce A. Hamill & James Hamill	Carol C. Spera
Debra Hamilton & Don Williams	Mike & Judy Tenzyk
Karen Lauria Hendry	Mr. & Mrs. Frank Tidikis
Mrs. Elizabeth Herold	Harold & Lois Walsh
The Herold Family	Felipe Wells & Sevy Petras
Ray & Peg Hirvonen Foundation	Bill & Betty Werner
Paula Hundt	Gloria Whittle & Stan O'Hoppe
Kempe Law Estates Tax Wealth	The Wong Family Foundation
Todd & Margaret Laycock	

Thank you to all those generous contributors who have donated to The Lyric Theatre as of June 1, 2026. If we have inadvertently overlooked your name in this listing, please accept our sincere apology and notify our Development Director, Heather Long, at 772.220.1942, extension 209.

Diamond (\$5,000 & Up)

Rick Carroll Insurance Company
Richard & Karen Dakers Charitable Fund
William B. Harris
Patty & Bob Hendrickson
The Holt Family Foundation, Inc.
Susan & Paul Jones
The Kahlert Foundation
Knight & Ann Kiplinger
Carolyn Metzger
Carolyn & Herbert Metzger Foundation
The Norris Family Foundation

Platinum (\$2,500 & Up)

In Memory of Jerry Applefield
Jim & Nancy Balow
Jim & Joanne Bintliff-Ritchie
Bob Cameron
Douglas & Suzanne Davis
Caterpillar Foundation
Stephen & Aida Fry
Hayford Family Foundation
Juanita J. Henson
The Black Marlin
McCarthy, Summers, Wood, Norman,
Melby & Schultz P.A.
Ebeth & Allen Peer
Bill & Nancy Pembroke
Martha & Bob Perimian
Ron & Karen Powell
Gail & Dan Rader
Robert & Louise Sanborn
Tom & Linda Schaefer
Tom Stewart
Robert & Sheryl Traub
James & Magalen Webert
Stanley J. & Laura G. Wiegand
Nancy & Richard Zappala

Gold (\$1,000 & Up)

Scott & Steph Abeel
Pat Arney
Dahna & Vincent Basilice
Suzanne M. Beers
Ulrich Bernier
Bill Boyes & Suzanne Martin
Morgan Brandt
Bernie Cook
Michael & Nancy Del Priore
Jonathan Deus
Patty Downing
Scott & Karen Eccleston
Jim & Gerda Fletcher
Jenni & Joe Garone
Paul & Karen Gasparro
Debbie George

Thomas & Sally Hamby
Mr. & Mrs. Thomas C. Hartzog
Mike Hill & Winnie
Douglas & Melinda Jennings
Mike & Sue Keenan
Ned & Joyce Kenna
George Kurlychek & Peggy Chase
Frances Langford Fund at The Community
Foundation Martin - St. Lucie
Anne Lewis
James H. LoPrete
Alex & Sharon Mason
Bill McMillen
Trust Me
Michael Moore
Alice & Allan Mostoff
Paul & Meagan Mroz
Joe Mulvehill
Vianne Nichols
Judith Nightingale & Franklin Cole
Raymond "Tony" & Karen Noga
Bob & Martha Perimian
Charlie & Sheila Perrin
Ronald & Karen Powell
Dr. & Mrs. Michael M. Raskin
Rick & Lynn Rasmussen
Michael Rodney
Gaye & Richard Rohde
Scott Sade
Tom & Linda Schaefer
Daniel Stern
Ellyn Stevenson
Michelle Stuck
Scott Sussman
Steven Swann
Davies & Gayle Tainter
Richard & Dorothy Talbot
Orren Tench
Lucy & Dick Thomas
Gene & Judy VanCuren
Kathleen Walgreen
John & Mallory Waterman
Phyl Weaver
Nancy & Joe Wertheim
LynnAnn White
Tom & Sue Whittington
Jane & Jeff Witherwax
Walt Zeigler

Silver (\$500 & Up)

Sam & Kathy Alioto
Harry Blot
Marc & Silva Brinkman
Stewart & Joan Buckle
Cheryl Campbell
Jack & Geri Daly
Joe & Vicki Davis
Steve & Susan Dehnen
Dana & Kathy de Windt
Jim & Ellie Dobrowski

Bruce Dudzic
Lin Ezell
Sirkka Firley
Jim & Sally Friend
Paul Garfinkle
Mary Gavin
Brian Gilbertson
Brad Gillman & Patty Dapontes
Mark & Janice Gold Family Foundation
Clair Gordon
Mary Graves
Robert L. & Connie L. Greene
Barbara Grimmer
Allen & Susan Herskowitz
Job J. & Dawn J. Ireland
Alan Jacobson
Charles Jung
Deborah Kessler
Anne Marie & Steve Leonard
Lucido & Associates P.A.
David & Shari Lum
Greg Lyden & Cathy Tormey
Judy Masset
Rion & Brandon McAllister
John & Carolyn Mellaci
Susan Metzger
J. Scott & Susan Miller
Tyrone Monte
John Morris
Stephen & Kathleen Naughton
Bruce Neumann
Phyllis Olsen
Ross & Grace Pillari
Jill & Rich Preston
Gary & Joan Pyne
Linda & Richard Regius
Robert Romeo
Rosemarie Saraco & Robert J Banasiak
Ranee Schatz
Lora H. Schwab
Catherine & Don Sharkey
Paul & Dorothy Shea
John Simoni
South State Bank
Gerhard & Katharina Stejskal
Ilene & Ken Stern
Ina Tornberg
Richard & Cheryl Turner
Rick Umbach
Frank & Julia Valente
Ted & Sharon Weise
Mark White
Wipeout Pests & Termites
Mark & Laurie Zabel

Bronze (\$250 - \$499)

Anis Y. Akrawi, M.D. & Carol L. Gesser
Charles Alaimo
Armellini Express Lines Inc.
Patrick Armstrong

Marcia Balow
Virginia & Raymond Bargull
Mike & Jacky Bastian
Linda & Gary Beagell
Cheryl Beyer
Jo Ann & Horst Boettcher
Dr. John P. Borneman
Dave & Shirley Bradley
Gail & Wally Brady
Gary Brookins
Michael J. Busha
George & Susan Cady
Garry Campe
Jolene Cappello
JD Carrell
Keith & Lauren Carroll
Peter Carroll
Arlette Cataldo
Diane Cibuls
Stanley Ciemniecki
Richard Dakers
Gary & Bernadette Debenian
Pat Deerin
Lois Demarest
Peter & Ruth Derow
Joe DeVingo & Barbara Meyer
Micki & Lee Dion
John & Loretta Dixon
Peter Dubay
Brian & Mary Dugan
Sharon Dugan & Scott Hughes
Cheryl Every Winter
Lin Ezell
Susan Fay
Mike Ferrier
Barbara Field
Marlys Freeman
Jim & Sally Friend
David Gentry
David Gittins
Jeff Golden
The David & Clair Gordon Foundation
Angela Hahn
Ron & Lyn Hanlon
Linda Harlan
Frank Hayden
Michelle Haynes & David Funnell
Glen & Debby Hedden
Linda Hoffman
Jack & Mary Louise Hogan
Kenneth Hooker
David Hopp
Louis & Melinda Houston
Karol Hufnagel
Jeff Imsdahl
Dawn Jackson
Bradford Johnson
Scott Johnson
Pamela & Glen Kay
Jeff Kelly
Paul & Shaun Kelly-Feinsinger
Jeremy Kensingler
David Koch

Mr. & Mrs. Brian Lee
Fred J. Leonardo
Greg & Sharon Lewis
Sandi Lyman
Kenneth MacGillivray
Timothy McHugh
Steve & Pat McKessy
Dave & Mary Milmore
M Ruth Neese
David Nord
Cheryl & Michael Olivieri
Xavier Quinones
Bill Reineke
Pam & Ed Reuter
Lee A. Roney
Brian Ruggles
The Rybovich Family
Dave & Karen Satur
Mike Schmidt
Allen Schocken
Edward Shapiro
Carol & Gary Silverman
Mark & Kim Smith
Brad Stevens
Teri Studiale
Greg & Delia Tardella
Irene & Mark Thaw
Richard & Peggy Thompson
Katherine Thropp
Ted & Pat Tiemeyer
Jessica Trossbach
William (Rick) Umbach
Lawrence C. Warter
Samuel Weitz
Richard & Brenda Wilfong
Harvey Wilson & Joan Williams
Dwight & Gail Wilson

Family (\$100 - \$249)

Susan Abair
Treasure Coast Accounting
Celeste Acinapura
Heidi & Bill Adams
Thomas Ahern
Teresa & Paul Albani
Wilson Alers
Samuel & Kathryn Alioto
Stephen Alois
Robert & Abby Alpers
Anita Alter
James & Alicia Andersen
Evan Anderson
Ralph Annunziata
Gretchen Anthony
Frank & Jane Antonucci
Bob & Barb Apley
Bob Arnold
E. Thomas Arnold
Alicia Ashworth

Margaret Badaracco
Paul Balzano
Charles & Amelia Banino
Sally Batz & Henley Sandidge
Michael Banz & Kathleen Blaha
Dean & Karen Barnard
Sandra Bastin
Mitch & Lynn Baumeister
Dr. & Mrs. Robert Baute
Jonathan Bayer
Ed & Denise Belizar
Jorge Benitez
Albert Bennett
Tammie & Neil Bernard
Barbara Berns
David & Genie Berry
Jack & Karen Bidosky
Janice Binger
Roy Bizjack
Kathleen Blaha
Robin Blanton
Jerry Bocchino
Horst Boettcher
Kelley Bonneau
David Borie
Melanie Borman-Gluck
William Bosco
Brenda Bott
Jeff & Susan Bowen
Camille Bowers
Carolyn Brada
Jim & Jackie Bradley
Mickey & Sandy Bradley
Dorie Bradshaw
Janice Brands
Sue Bremner & John Molinelli
Thomas Brendal
David & Linda Brewer
Elizabeth Brock
Amy Broderick
June Brody
Margaret Ann Brutvan
Jodi & Suzy Bubl
Steve & Bettie Buck
Rob & Jan Bullock
Bill Burckhard & Suzanne Parsons
Allison & Roger Cabana
Wayne Calabrese
John Calabro
Douglas Canaday
Atom, Kevin, Robyn & Herb Cantor
Larry Cantrell
Mark Carbone
Dr. Michael Carelli
Joseph Carfagna
Arthur Carpentier
Roger Caruba
Nick Cascione
Melissa Cash
Alan Cassanelli
Denise Cerniglia
Paula Chabrowe

Judith Chamberlin
Gary Chandler
Kym & Jerry Cherubini
James & Judy Chisholm
Glen & Barbara Christoff
Tom & Bonnie Chizmadia
Diane Cibuls
Nancy Citarella
Julia Clark
Robin Clark
Richard Clee
John & Mary Clifford
Robert Cocchiola
Lynne Cohen
Barbara Collins
Paul Collins
Thomas Condon
James & Mary Connell
Ted Conner
Michelle Constantin & Ed Bee
George Cooper
Melissa & Rob Corbett
George Cottiero
Ed & Sheila Crapo
Sherrie Crescini
Ted Crocker
Leslie Cuatt
Michael Curry
Sharyon Daigneau
Marie D'Angelo
Ronda D'Antonio
Marc Davidson
Dwight & Loreen Davis
Melissa Davis
David Deakins
Larry Degenfelder
Ann DeLisa
Frank DeLustro
Nancy DeNicola
William Dermody
Peter & Ruth Derow
Dr. & Mrs. Keith de Windt
Major Jim Diamond
Frank DiGiacomo
Sharon & Larry Dolinsky
Maryanne Domato
Lynn & Doug Donaldson
Maggie Dowd
Charles Driggs
Edward & Elizabeth Duffy
Mark, Suzanne & Shannon Duggan
Melinda & Daniel Duke
Leslie & Ed Dulbs
Pamela Duncan
Gerald Dunworth
Debra Duvall
William Dwyer
Bill & Cindy Eaton
Melanie Edwards
Jimmy Egan
Kevin & Lucinda Egler
Linda Eibe

Dale Eisenshtat
William Elliott
Marilyn & Steve Engel
Marlene Enot
Evamaria Eskin & Robert Hess Jr.
Alan Ewing
Jeanette Ferretti
Mindi Fetterman
Barbara Field
Sinikka Firley
Mark & Bridget Fischer
Rip & Noreen Fisher
Bill & Mel Flanigan
Cathy Flanigan
Betty & Herb Floris
Brian & Phyllis Foley
John Foster
Michelle & David Foster
Kathleen Fougerousse
Douglas Fox
Lanning & Jane Fox
Robert Franco
Steve & Lynn Frank
Ernest Fratalia
Joseph & Maureen Frazzitta
Peter Fredericksen
Thomas Gabriel
David & Debbie Gallin
Barbara Garber
William Gates
Brian & Deidre Geary
Jeff & Gonda Gebhardt
Francis Geib Jr.
Skip & Edie Genras
David Gentry
Lucie Georgi
Gregory Giambalvo
John Gianfrancesco
Bruce & Kathy Giannotti
Eileen Gigantino
Patricia Gillen
Kathleen Ginestra
Jon & Barbara Girardi
Charles Glover
John Goebel
Stuart Goldenberg
George Goldman
Daniel Goldstein
Porfirio & Mary Ann Gomez
Douglas Gordon
Patricia Gorman
Henry & Rachelle (Rocky) Grady
Timothy & Susan Grajewski
Kathy Grant
Laurence & Deborah Grayhills
Joe Graziano
David Greaves
Richard Green
Martin Greenberg
James & Sharon Griffin
Ken & Sheri Griffin
Stan & Ellen Gross

Vivian & Charles Grunbaum
Scott Gumienny
Gloria Guzman
Christopher Haddad
Angela Hahn
Tara Haigler
Stephen Hall
Ron & Lyn Hanlon
William Hanson & Julia Clark
Gerald Harkins
Linda Harlan
Stewart Hatch
Gaye & Brad Hatfield
Warren & Brenda Hayford
Richard Heckler
Meryl Heller
Mark Herman
Alex & Charlene Hernandez
Kevin Herndon
Lorrie Ann Hero
Lyle Hilton
Susan Hirsch
Marcia Hocker
John Hoffman
Ken & Janet Hoffman
Peter Hogarth
April & Bob Holcomb
Madelyn & Tom Holder
James Hollinger
Karla Hoover
Darla Horn
Marilyn Horan
Blythe Houghland
April & Rodney Howard
Karen Howarth & Philip Rosenberg
Bill Hrynkiwicz
Peyton Hudson
Cathy & Bill Huff
Ronald Ingles & Barbara McCalister
Horace Irvine
Donald Jackson
Mike & Sandy Jackson
Rima & Frank Jacobellis
Peter Marceau
Debra James
Ronald Jarvi
Noah Joffe
Cedric Johnson
Rich & Pat Johnston
John Jovanovich
Michael Kalas
Mike Kamradt
Mr. & Mrs. Thomas Kane
Harvey & Lena Kasliner
Ronnie Katz
Kelly Kaufman
Richard Kaufman
John & Diana Kelly
Rosemary Kelly
John Kermashek
Tim Kinane
Tim Kinkead
Al & Mary Kinzer

Wayne Klick
Lawrence Kliger
Robert & Eileen Kloppenborg
Kathy Koivula
Julie & Paul Kozikis
Jeffrey Krauskopf
Buddy Kresge
Karl & Donna Krueger
Taryn Kryzda
Jeff & Ellie Lafer
Matthew LaFrance
Helen & Robert Laidman
Michael Laing
Linda Lambrecht
George Lambrose III
Michael Lane
Judy & Ed LaPerre
Melody LaPierre
Mary Lawton & Louis Augone Jr.
Jeff & Jackie Lazarus
Robert Leach
Christine Leeds
Jeff & Leslie Leibowitz
Joann Leone
Gary & Susan Leroy
Robert & Phyllis Levin
Ellen & Hank Libby
Scott & Karen Linick
Donna Linton
Dean & Barbara Lindquist
Heather & Jeffery Long Jr.
John LoPorto
Josie Lorusso
Thomas Lowell
Michael & Darlene Lucas
Roger & Barbara Lyon
Howard Lyons
Stephen MacDougall
Denise Magee
Ben Magrill
William J. Mahoney
Mr. & Mrs. Steve Mamangakis
Richard Manns
Peter Marceau
William Marinelli
Eileen Masiero
Elinor Mastroff
Tony Mastrogiovanni
Mark Matthews
Raymond McCall
Irene & Michael McCambridge
Jane McCauly
Bert McConnell
Carol & Jack McDonough
Dan McDougal
Larry & Ann McGrath
Denise McKenzie
Kathleen McManus
Kris McNeal

Paul McNulty
Michael McPhillips
Kevin McVeigh
Madeline Mellinger
Julia Melville
Susan Menson
Robert Messier, Jr.
Mr. & Mrs. Edward Metzler
Eileen Metzler
Paul & Pat Mielke
Jeffrey Millar
Helen & William Miller
David Moellering
Regina Mogle
Craig & Susan Monaghan
Raymond Murdock
Mark Murray
Tom & Sue Mutchler
Angela Nardolillo
Ron & Karen Nathan
Norman Naval
Joseph Nekola
Linda Nelsen
Evelyn Nelson
Robert Nelson
Dr. & Mrs. Domingo Ngo
Gerard Nichols
Mel Nobel & Jeanine Webster
David Nord
Janice Norman
Susan Norris
David & Susan Noyes
Anders Nyquist
Jeff & Debbie Oakley
Marianne & Hugh O'Boyle
Paul & Susan O'Brien
H. Scott O'Buck
Leona O'Connor
Rich & Holly O'Hara
Diane Ontko
Nancy Oosting
Grant & Cindy Osborne
Scott Osias
Anthony & Rose Oteri
Vickie & Morris Owen
Walter Paczkowski
Kym & Scott Papp
Brett & Jodi Parker
Jill Paton
Kathleen Pello
Larry Perkins
Frank Perry
Lauren Peterson
Mike Petrigian
Deb Pfrogner
Forrester & Kathy Pierce
Terry Pinnix
Daniel Pittard
Kelli Popovic

Kurt Porceng
Doug & Kathleen Powell
Tara Powers
Sonia Princinsky
Quarforth Family
Bob Racich
David & Mary Radabaugh
Bea Radliff
Robert Rasmussen
David Raye
Michael Redding
Marc & Gail Reiceg
John Reilly
Thomas Rentoul
Trish & Jay Repass
Pattie & Charlie Restaino
Joette Lorion Rice
Ray & Sue Riddell
Sue & David Rivard
Vicki Robb
Mark & Kathleen Rodgers
Thomas Roman
Marilyn & John Roselli
Elizabeth Rosenberg
Mark Rosenfeld
Wesley & Ina Rosenthal
Robert Rotundo
Connie Ruble
Barbara Rusinko
Jeff Samaras
Robert Sanford
Janet Santa Anna
Judith & Jorge Santiago
Susan Santin
Jeffrey Scales
Harry Schalk
Norman Scheffner & Gail Bird
Marcella Schell
Hank & Julie Schellenger
Susan & Terry Schmidt
Bob & Bev Schneider
Dr. Steven & Lisa Schnell
Frank & Kathy Schoch
Nicki & David Schoonover
Cynthia Schroll
Robert & Vickie Schultz
Russell & Karen Schutte
Owen & Linda Schwaderer
Ronald Scirrotto
Paul Sears
Preethi Sekharan
Loretta Sfiridis
Paul Simler
Scott Slavens
Jacqueline Smith
Martha Smith
Peter & Kathye Smith
Spike & Debbie Smith
George & Patti Sousa

Patrick Spadoni
Raymond & Rhonda Spedding
Jack & Linda Spyker-Oles
Sheila Stahl
Catherine Stauffer
Michael Stein
Gerry & Cyndie Stephenson
Paul Strauss
Robert Swartz
Ken & Daina Takacs
Tom & Margaret Teal
Alda Tedeschi
Don Thomas
Stephen & Janine Timm
Spencer & Susan Toomey
Terry Traeger
Alica Treder
Dr. Jerry & Lori True
Glenn Tuckman
Jennifer Turner
Nancy Turrell
Randy Tyo
Steve & Lynn Tyre
Kathleen Uras
Linda Van Dam
Gary Vanderwood
Vandling Family
Helen & Wayne Van Dusen
George & June Vassallo
Tom & Rita Veale
Angelo Vivelo
Marleen Volkert
Charles Voss
Ray & Sandy Walker
Greg Warner
Sally & Steve Wasserman
Stacie Wertheim
Johan & Susan Wesslen
Kurt & Karen Wieditz
Stanley & Laura Wiegand
Jim & Jan Wilds
Craig Willert & Cynthia Gustafson
David Willey
Jim & Maureen Williams
Richard Williams
Sharon Wilson
Greg Windsor
Jacqueline Winslow
William & Lois Woods
Laura Wright
Teresa Wright
Larry & Jan Wzorek
Eva & Jery Yakuben
Patricia Yates
Cindy Ziemba
Gary Zingo & Mary Nash
Ed & Ann Zorn

We couldn't do it without you.

CONTRIBUTORS
2025-26

Membership = “Fast Pass”

to your favorite seats and exclusive perks

Advance notice of upcoming events
Purchasing tickets in advance of public
Discounts at local restaurants and businesses
 (Family Level and Up)

A drink on us
 (Bronze Level and Up)

Friend \$50

- Purchase four (4) tickets in advance for each show presented by The Lyric Theatre.*

Family \$100

- Purchase eight (8) tickets in advance for each show presented by The Lyric Theatre.*
- Patron Privilege Card, which offers a variety of discounts at many local restaurants and shops.

Bronze \$250

- Two (2) drink vouchers for The Lyric Bar.
- Purchase unlimited tickets in advance for each show presented by The Lyric Theatre.*
- Patron Privilege Card, which offers a variety of discounts at many local restaurants and shops.

Silver \$500

- Ticketing service hotline for priority seating one (1) week in advance of our Season announce to all membership.
- Four (4) drink vouchers for The Lyric Bar.
- Purchase unlimited tickets in advance for each show presented by The Lyric Theatre.*
- Patron Privilege Card, which offers a variety of discounts at many local restaurants and shops.

Gold \$1,000

- Ticketing service hotline for priority seating two (2) weeks in advance of our Season announce to all membership.
- Behind the Scenes Private Tour.
- Six (6) drink vouchers for The Lyric Bar.
- Purchase unlimited tickets in advance for each show presented by The Lyric Theatre.*
- Patron Privilege Card, which offers a variety of discounts at many local restaurants and shops.

Platinum \$2,500

- Ticketing service hotline for priority seating three (3) weeks in advance of our Season announce to all membership.
- Behind the Scenes Private Tour.
- Eight (8) drink vouchers for The Lyric Bar.
- Purchase unlimited tickets in advance for each show presented by The Lyric Theatre.*
- Patron Privilege Card, which offers a variety of discounts at many local restaurants and shops.

Your tax-deductible donation will help to keep ticket prices at affordable rates, expand cultural and Arts & Education Programming, and preserve our beautiful historic landmark.

Enjoy the Perks

with the Patron Privilege Card

As a thanks for your membership, you will receive a Patron Privilege Card.** Use it to thank these merchants who support The Lyric Theatre.

April Daze

308 S Colorado Avenue
 10% Off Any Purchase Over \$50

Argento Jewelry

27 SW Osceola Street
 10% Off Any Purchase

B Boutique

2651 SE Ocean Boulevard
 10% Off Any Purchase

The Black Marlin

53 SW Osceola Street
 Free glass of House Wine or Domestic Draft with Entrée

Calico Trading Company

47 SW Osceola Street, Suite 104
 10% Off Any Purchase of \$50 or More

Cinco de Mayo Mexican Cuisine

1840 NE Jensen Beach Boulevard
 15% Off Dinner

Coast Beauty Bar

30 SE Ocean Boulevard
 Free Shine or Deep Conditioning Treatment with Any Service.

Coconut Bay Gifts & Beach Décor

13 SE Osceola Street
 15% Off All Yankee Candle

Diana Mae's Sandal Shack

47 SW Osceola Street
 10% Off Any Regularly Priced Purchase Excluding Surf Boards

The Dirty Hippie

43 SW Osceola Street
 10% Off Any Purchase Over \$100 of Regularly Priced Items

Duffy's Sports Grill

1 SW Osceola Street
 \$10 Off Any \$50 Purchase (coupon)

The Estate, Trust & Elder Law Firm, P.L.

900 East Ocean Boulevard
 Suite 210B, Stuart
 One Complimentary Consultation

The Googan Coffee Shop

55 SW Flagler Avenue
 10% Off Any Order

Gypsea Cottage

49 SW Osceola Street
 10% Off Any Purchase Over \$50

Harbor Wear

307 S Colorado Avenue
 10% Off Any Regularly Priced Item

Island Cotton Company

53 SW Flagler Avenue
 10% Off Any Purchase

Kilwins Chocolates, Fudge & Ice Cream

31 SW Osceola Street
 Free Slice of Fudge (coupon)

Luna Italian Cuisine

49 SW Flagler Avenue
 10% Off Any Purchase

Riverwalk Café & Oyster Bar

201 SW St. Lucie Avenue
 1 Free House Wine or Domestic Draft with Purchase of Entree (coupon)

Smokin' Premiums

51 SW Osceola Street
 Free Gift with Purchase of \$10 or More

Solare Sunglasses

4 SW Osceola Street
 10% Off Any Purchase

**BECOME
A MEMBER!**

theLYRIC

**GET A
COOL
CARD!**



**ENJOY
THE PERKS!**



*Subject to availability

**Patron Privilege Card requires Family membership level and above

For more information, contact Heather Long, Development Director at 772-220-1942 ext. 209
 or development@lyrictheatre.com

SEATING & GENERAL INFORMATION

STAGE

	7 5 3 1	AA	111 110 109 108 107 106 105 104 103 102 101	AA	2 4 6 8
	9 7 5 3 1	BB	111 110 109 108 107 106 105 104 103 102 101	BB	2 4 6 8 10
	9 7 5 3 1	CC	111 110 109 108 107 106 105 104 103 102 101	CC	2 4 6 8 10
	11 9 7 5 3 1	DD	111 110 109 108 107 106 105 104 103 102 101	DD	2 4 6 8 10 12
	13 11 9 7 5 3 1	EE	111 110 109 108 107 106 105 104 103 102 101	EE	2 4 6 8 10 12 14
	13 11 9 7 5 3 1	FF	111 110 109 108 107 106 105 104 103 102 101	FF	2 4 6 8 10 12 14
	13 11 9 7 5 3 1	GG	111 110 109 108 107 106 105 104 103 102 101	GG	2 4 6 8 10 12 14
	13 11 9 7 5 3 1	HH	111 110 109 108 107 106 105 104 103 102 101	HH	2 4 6 8 10 12 14
	13 11 9 7 5 3 1	JJ	111 110 109 108 107 106 105 104 103 102 101	JJ	2 4 6 8 10 12 14
	13 11 9 7 5 3 1	KK	111 110 109 108 107 106 105 104 103 102 101	KK	2 4 6 8 10 12 14
	13 11 9 7 5 3 1	LL	108 107 106 105 104 103 102 101	LL	2 4 6 8 10 12 14
	13 11 9 7 5 3 1	MM		MM	2 4 6 8 10 12 14
	13 11 9 7 5 3 1	A	112 111 110 109 108 107 106 105 104 103 102 101	A	2 4 6 8 10 12 14
	15 13 11 9 7 5 3 1	B	112 111 110 109 108 107 106 105 104 103 102 101	B	2 4 6 8 10 12 14 16
	19 17 15 13 11 9 7 5 3 1	C	112 111 110 109 108 107 106 105 104 103 102 101	C	2 4 6 8 10 12 14 16 18 20
	19 17 15 13 11 9 7 5 3 1	D	112 111 110 109 108 107 106 105 104 103 102 101	D	2 4 6 8 10 12 14 16 18 20
	3 1	E	112 111 110 109 108 107 106 105 104 103 102 101	E	2 4
	3 1	F	112 111 110 109 108 107 106 105 104 103 102 101	F	2 4
	19 17 15 13 11 9 7 5 3 1	G	114 113 112 111 110 109 108 107 106 105 104 103 102 101	ELEVATOR	
	19 17 15 13 11 9 7 5 3 1	H	114 113 112 111 110 109 108 107 106 105 104 103 102 101		
	126 125 124 123 122 121 120 119 118 117 116 115	J	114 113 112 111 110 109 108 107 106 105 104 103 102 101		

- Upper Balcony
- Lower Balcony
- Orchestra
- Wheelchair Accessible

Patrons with disabilities: Special seating arrangements can be made with the Box Office at the time you purchase tickets, based on availability.

Hours

Box Office hours are Monday-Saturday from 10:00 am to 4:00 pm. We are also open two (2) hours prior to curtain on the day of a performance.

Purchasing Flexibility

For your convenience, you can purchase tickets in several different ways:

- Online at lyrictheatre.com
 - By phone at 772-286-7827
 - In person at the Box Office
- 59 SW Flagler Avenue, Historic Downtown Stuart

Will Call

Prepaid tickets are available beginning two hours prior to each performance at the Box Office in the lobby.

Paid tickets can also be picked up in advance at any time the Box Office is open, or they can be mailed to you upon your request if there is ample time to do so prior to the performance date.

Gift Certificates

Gift certificates can be purchased in any denomination and are good for any performance held at The Lyric Theatre. They are valid for one year from the date of the purchase. Gift certificates are not transferable, and can only be redeemed by the person(s) for whom they are purchased. They are non-refundable and cannot be redeemed for cash.

Photography/Recording

The use of any audio or visual recording device is strictly prohibited. Patrons will be asked to leave the Theater.

Cell Phones/Electronic Devices

Please turn off or put personal communication devices on silent mode prior to entering the Theater.

Patrons with Disabilities

Special seating arrangements must be made with the Box Office at the time you purchase tickets, based on availability. Lobby restrooms are accessible.

Assistive Listening Devices

Assistive listening devices are available in the Box Office.

Latecomers

Performances begin at the advertised time. Please allow proper time for parking and collection of tickets. Latecomers will be seated at the discretion of management.

Parking Vouchers

Vouchers are provided to our Patrons attending matinee performances.

Emergency Exits

The exits indicated by a green lighted sign nearest to the seat you occupy is the shortest route to the street. In the event of a fire or other emergency please exit immediately. Please follow the directions of the House Staff.

First Aid

Please see the House Manager.

Emergency

If you become aware of a medical or other emergency, please inform the House Staff immediately. AED is located in the lobby.

Smoking/Vaping

Is prohibited anywhere inside the Theater.

Beverage Service

A full service cash bar is available in the lobby.

Restrooms

Located to the left and right of the Theater lobby entrance.

Lost and Found

Contact the Box Office at 772-286-7827.

Group Sales

Discounts are available for groups of 10 or more. Please contact Sue Nauss, Box Office Director at 772-220-1942 x203 for more details.

Customer Service

If you have a suggestion or problem, please contact Kia Fontaine, President/CEO, Kia@lyrictheatre.com or 772-220-1942 x207.

Theater Etiquette

As a courtesy to the performers and other audience members, please do not leave your seat until the end of the act. If for some reason you must leave, please wait for a pause in the program.

Volunteer Opportunities

If you would like information about volunteer opportunities, please contact our Volunteer Manager, Terri O'Connell at 203-470-3127 or volunteer@lyrictheatre.com.

No Weapons or Firearms

are permitted on premises.

THE LYRIC LEGACY SOCIETY



Several very special patrons have chosen to include The Lyric in their planned giving by directing a portion of their assets to The Lyric. In their honor we created The Lyric Legacy Society to acknowledge their passion and love for The Lyric.

- Bob & Ralf Massey
- Davies & Gayle Tainter
- Paul A. Shirley Family
- Ed & Denise Belizar
- Randy & Linda Prange
- Nancy & Joe Wertheim
- Sherry Dunn
- Clayton & Ann Timmons
- Charles & Janet Seidler
- Frank M. Byers, Jr
- Mr. & Mrs. Howard Cook
- Jean Friend
- Mary Laub Cowan
- Greg & Sharon Lewis Family Trust
- Tom & Linda Schaefer
- Bill & Betty Werner
- Mike Hill

Join fellow theatre lovers by becoming a Member to express your love and continuing support for The Lyric.

Contact Heather Long, Development Director at 772.220.1942 extension 209 or at development@lyrictheatre.com.



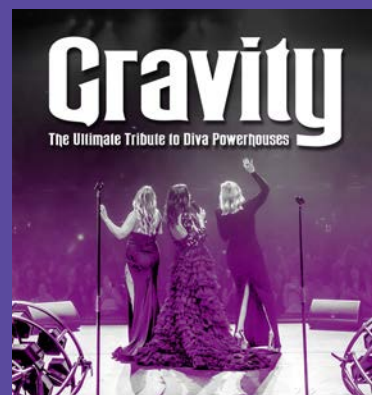
Continuing to provide Treasure Coast families with the wonderfully unique and magical experience of live performing arts.

FAMILY FUN SERIES

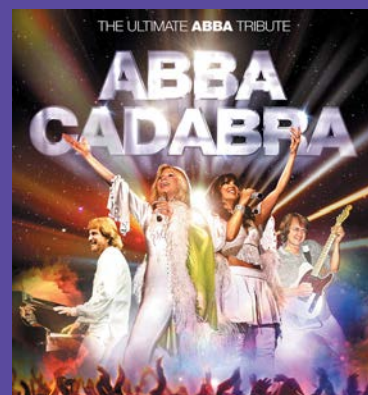
Ladies and gentlemen, boys and girls, children of all ages, step right up to The Lyric's Family FUN Series! Get ready to experience the magic of live performances, igniting a passion for art and culture that will last a lifetime! Proudly sponsored by The Bauman Family Foundation



DEC 9



JAN 7



JAN 26



JAN 30

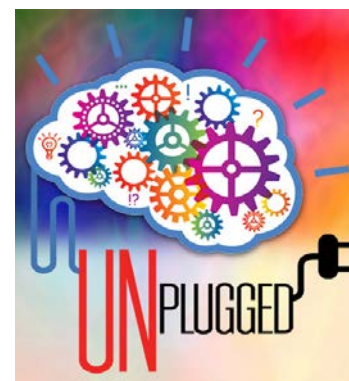


FEB 16



MAR 18

THE LYRIC'S AWE, THAT'S SOME! SUMMER CAMP



The LASC is in session July 6-24 with "Unplugged - Disconnecting to Connect"

In this technological age, it is easy to lose touch. We need to make more time for talking and listening without electronic interruptions. Campers will experience the joy of what it means to disconnect and reconnect to one another.



Camp with a Conscience

At LASC, each session supports a theme that promotes socially responsible behavior. We use the performing arts as a medium to teach character-building and practical life skill applications like teamwork, self-discipline, problem solving, tolerance and kindness. Through working together toward the common goal of presenting the sharing, our blossoming actors learn to overcome adversity, insecurities and gain respect for direction and different points of view. And it's just plain FUN!

For more information about The Lyric's Arts & Education Programs, please contact Sue Nauss, Arts & Education Coordinator at 772-220-1942 ext. 203 or Sue@LyricTheatre.com

Arts AND EDUCATION AT theLYRIC

FREE TICKETS for Non-Profit Youth Organizations!

KidTix provides FREE tickets to non-profit organizations that serve low-income and/or at-risk youth. Providing access to arts and culture is essential to strengthening the power of change, making our community a better place to live, work and play. It is well documented that arts and cultural programs offer enrichment, inspiration, education and entertainment to individuals and communities. Children involved in the arts are usually more successful in school, more confident, knowledgeable and well-rounded.



KidTix are available on a first-come, first-serve basis. For more information about KidTix and The Lyric's Arts & Education programs, please contact Sue Nauss, Arts & Education Coordinator at 772-220-1942 ext. 203 or Sue@LyricTheatre.com



VISIT DOWNTOWN STUART'S FARMER'S MARKET!

9-1PM APRIL - SEPTEMBER
9-2PM OCTOBER - MARCH

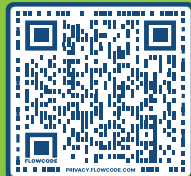
FLAGLER PARK - 221 SW FLAGLER AVE

- Mobile Bar • Live Music
- Fresh Local Produce
- Artisanal Cheeses & Breads
- Local Meats & Seafood
- Sauces, Spices, Dips & Treats
- Specialty Beverages
- Unique Handcrafted Goods
- Kids Market (3rd Sunday of every Month)



EVERY SUNDAY ALL YEAR ROUND

SCAN CODE FOR MORE INFO



Support the Arts

Become a Member • Donate • Director's Circle • Arts & Education Programs • Advertise in the Lyric Magazine Patron Perks • Gift Certificate • Volunteer • Lyric Legacy Society • Show Sponsorship • Corporate Partnership

When you support The Lyric Theatre you play a leading role in providing the community with affordable ticket prices, cultural and arts education programming while preserving our historic landmark. Access to Performing Arts strengthens our community socially, economically and educationally.

To show your support or for more information, contact Heather Long, Development Director, at 772-220-1942, ext. 209, via email at Development@LyricTheatre.com or visit www.lyrictheatre.com/support-the-lyric.





OUR **Volunteers**

THANK YOU to the volunteers who have helped shape The Lyric's story— one performance, one guest, and one act of service at a time.



Bartenders

- | | | |
|---|--|-------------------------------------|
| 20+ YEARS OF SERVICE
Maribeth Konz | 10+ YEARS OF SERVICE
Reva Zemke
Bob Cameron | UNDER 5 YEARS
Kelly Cuatt |
| 15+ YEARS OF SERVICE
Kathy Grant
Kevin Grant
Leslie Cuatt | 5+ YEARS OF SERVICE
Penny Gehring | |

Ushers

- | | | |
|--|---|---|
| 25+ YEARS OF SERVICE
Lois Heimbach
Gayle Kochan | Charlene Bartlett
Ginny Beagan
Cynthia Beddow
Wendy Berringer
Ron Blake
Joseph (Jodi) Bubla
Lael Burns
Craig Byrd
Christine Campora
Ginger Carslake
Mark Choate
Mary Ciccone (Lupton)
Nancy Citarella
Lucy Corley
Michael Cushard
Paula Cushard
Carol Davis
Patti Descutner
Carol Dion
Donna Dobrich
Bo (Robert) Douglas
Kevin Egler
Lucinda Egler
Phyllis Elkins
DJ Erickson
Patricia Erickson
Barbara Fields
Ken Fields
Larry Franklin
Ed Gardner
Linda Gardner
Donna Goethel
Doug Goethel
Bruce, Dr. Gopman
Larry Grayhills
Frank Griffiths
Carolyn Herbert
Anne Herrington
Dolores Kennedy
Mark Kochis | Adam Krimmer
Ann Krimmer
Phyllis Leclercq
Maureen (Mo) Leety
Ralph Lombardo
Donna Lupinacci
Mary Anne Mahoney
Susan Marcello
LeslieAnne Markowitz
Martin Markowitz
Bob Maxwell
Stacey Maxwell
Christine Miranda
Bob Mocher
Guy Napoli
Sue Napoli
Bruce Neumann
Brenda Nolin
Tom Nolin
Frank O'Brien
Jackie O'Connor
Laura Peel
Laurie Pisciotto
Joseph Schaefer
Kathy Shabotynskyj
Denis Spizuoco
Jonathan Stout
Nancy Stoyko
Judy Talaber
Joy Teed
Rose Trum
Greg Warren
Sonia Warren
David Wasser
Jamie Wasser
Jill Watson
Mikki Wells
Cathy White
Donna Zutter |
| 20+ YEARS OF SERVICE
Kathy Koivula | | |
| 15+ YEARS OF SERVICE
Joan Clark
Renee Hill
Marcy Roeder | | |
| 10+ YEARS OF SERVICE
Ranelle Furniss
Karin Stocker | | |
| 5+ YEARS OF SERVICE
Sharon Ardito
Jeff Brown
Janet Church
Bobbi Demers
Christine Ernst
Kathy Finn
Eileen Francis
Dan Goller
Lou Gregory
Nancy Johnson
Lois Olivari
Jean Spalt | | |
| UNDER 5 YEARS
Kreg Ackmann
Jean Bamonte
Debbie Banta
Kathleen Barbieri
Andy Barniak | | |

THE BARN THEATRE SEASON 56 2026 - 2027

SEPTEMBER 10-27, 2026 **Sister Act** A DIVINE MUSICAL COMEDY

NOVEMBER 5-22, 2026 **HOW TO SUCCEED IN BUSINESS WITHOUT REALLY TRYING** THE MUSICAL COMEDY

JANUARY 7-24, 2027 **ANYTHING GOES** LIVE BAND

MARCH 4-21, 2027 **COME FROM AWAY** THE HIT MUSICAL BASED ON THE REMARKABLE TRUE STORY

MAY 13-30, 2027 **Disney THE LITTLE MERMAID**

PLUS SPECIAL EVENTS & CONCERTS

BARN-THEATRE.COM | 772-287-4884 | STUART, FL



THE ESTATE, TRUST & ELDER LAW FIRM, P.L.

WESLEY R. HARVIN II, ESQ., LL.M.
SENIOR ATTORNEY

J. NICHOLAS CASTELLANOS, ESQ., LL.M.
PARTNER

MICHAEL D. FOWLER, ESQ., LL.M.
OF-COUNSEL
BOARD CERTIFIED ELDER LAW

PRACTICE AREAS

- Estate and Trust Planning
- Probate and Trust Administration
- Medicaid Long-Term Care Planning
- Senior Exploitation
- Guardianship

772-828-2588

Stuart Office
900 SE Ocean Blvd
Suite 210-B
Stuart, FL 34994

Other Locations:
Fort Pierce - Okeechobee - Port St. Lucie - Vero Beach

Offering FREE Monthly Seminars



J. NICHOLAS CASTELLANOS, ESQ., LL.M.
PARTNER

For more information, visit www.etelf.com or email us at info@etelf.com
Like us on Facebook @estatetrustelder



Marvin S. Cone Annual High School Juried Art Show Alumni Exhibition
June 26 - August 22
Image by alumnist Jodi Gaines

Sunset Concerts at the Gallery
Second Tuesdays Monthly | 5:30PM
Reserve your seat at MartinArts.org

MARTIN Arts
80 SE Ocean Blvd, Stuart, FL 34994
(772) 287-6676
Gallery Hours: Tuesday, 10AM - 6PM and Wednesday - Saturday 10AM - 4PM

Visit our website to learn more about upcoming exhibits in the Court House Cultural Center:



MartinArts.org    @martinartsfl

theLYRIC

THEATRE FOR RENT

Set the stage for your magical production! The Lyric staff will work with you to stage an unforgettable event in our historic venue.

Fundraiser • Business Luncheon • Wedding Award Ceremony • Cocktail Reception Seminar & Workshop • Corporate Gala Private Screening • Photo or Film Project

Your special event joins the rich history that makes The Lyric so unique.

For rental rates and availability!

Call Brandon McAllister, General Manager at 772-220-1942, ext. 223 or contact via e-mail at Operations@LyricTheatre.com

Locally and Family Owned Dining in Your Neighborhood



S O C I A L

TUESDAY

Tini and Tuna Tuesday
\$5.00 off of our house infused
pineapple martini's
(*Titos Vodka at Gafford and
Mi Campo Tequila at PCS*)
and our southwest tuna stack

WEDNESDAY

Wine Down Wednesday
50% off of any bottle of wine

THURSDAY

Burger Night
\$10 off of our special blend of
brisket, short rib & ground chuck
fire grilled burger

SUNDAY

Sunday Funday
Beginning at 3pm - we offer 1/2 of all
of your favorite adult beverages and
KIDS EAT FREE (*dinner only*)

Summer
Weekly Specials



47 SW Flagler Avenue • Stuart, FL
(772) 221-9517 • www.thegafford.com

3168 SW Martin Downs Blvd. • Palm City, FL
(772) 254-4247 • www.palmcitysocial.com

Don't feel like getting out? We now offer Door Dash!