

theLYRIC

Winter-Spring 2026



100 years of community, connection & creativity



On the Cover
The Lyric celebrates **100 years**
of community, connection
& creativity.



Photo: Steve Rapport

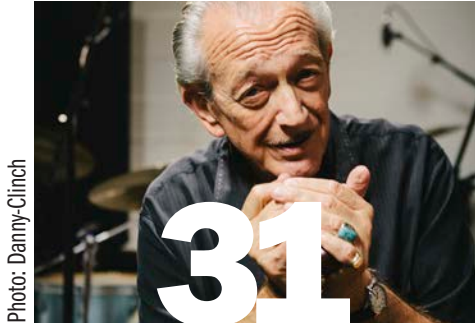
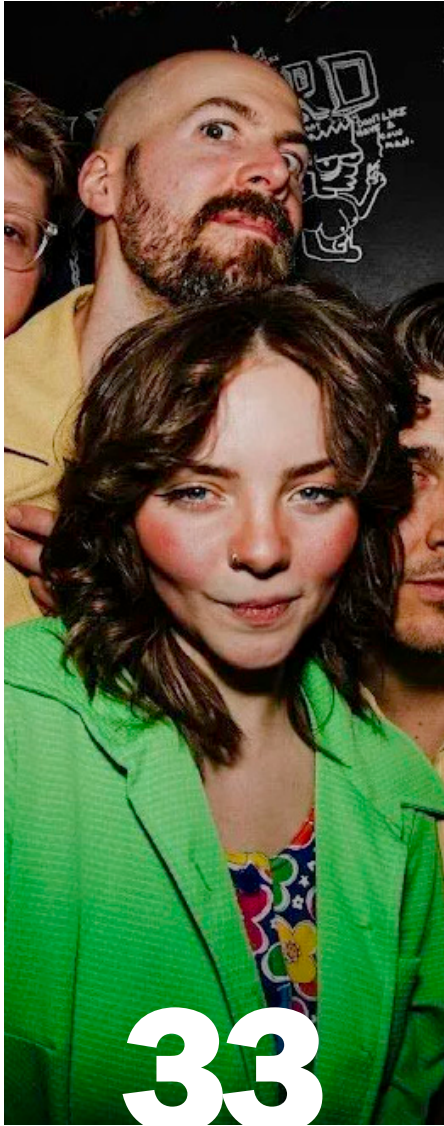
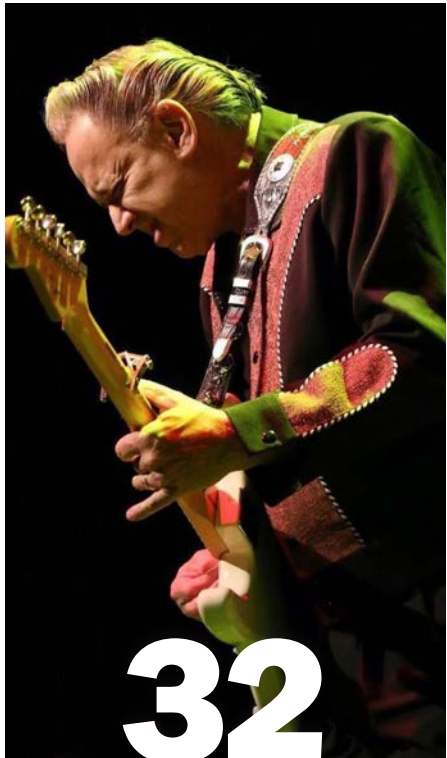


Photo: Danny-Clinch



What's Inside

President / CEO Letter, Board of Directors & Staff	4
Shout Outs! & Advertiser Index	5
Was Happenin'?	10
QR Code: Shows by Genre	35
2025-26 Season Lineup	36
New Shows Added	38
100 Years of The Lyric	40
Director's Circle & Contributors	46
Patron Privilege Card	50
Lyric Volunteers	52
Give the Gift of Live Entertainment	53
Seating & General Information	54
Lyric Legacy: A Society for the Preservation of the Arts	56
The Perks of Membership	58
Discovery Series for Young Audiences	59
KidTix: Free Tickets for Non-Profit Youth Organizations	60
Youth Arts Celebration Auditions	60
Youth Arts Celebration 2026	61
Family Fun Series	62
The Lyric's AWESOME! Summer Camp 2026	63
Support the Arts	65

Photo: Jim Hartzell

President / CEO

Kia Fontaine

Board of Directors

Sharon Holt
Chair

George F. Bellows
Vice Chair

Harold W. Walsh
Treasurer

Linda Weiksnar
Secretary

Directors
Todd Laycock
Kristofer Lyon
Msebenzi Masondo
Eileen D. Morris
Elliot M. Paul

Chair Emerita
Ethel Christin

Artistic Director Emeritus
John Loesser

Advisory Board

Pat Pendergast
May Smyth

Lyric Theatre Staff

Controller
Monica Soricelli

Development Director
Heather Long

General Manager
Brandon McAllister

**Director of Box Office Services &
Arts & Education Coordinator**
Sue Nauss

**Assistant to Director of
Box Office Services**
Lori Maxwell

Box Office Associates
Janet Church
Cathy Collins
Zahria Gainey
Sharon Horton
Octalie Lovinsky
Wendy Lucas

Marketing Director
Moises Miguel

Art Director
Michael Renfro

Technical Director
Sully Cook

Accounting
Kellie Jocoy

Copywriter & Creative Services
Shelley Koppel

House Managers
Heidi Condon
Jill Kober
Terri O'Connell
Linda Lambrecht
Phyl Weaver

Security
Jimmy Egan
Tom Wiegierink

Volunteer Manager
Terri O'Connell

Legal Advisors
Terence P. McCarthy
and Owen Schultz

You are The Lyric!



Weaving together the history of The Lyric Theatre over the past 100 years is a story of community, connection & creativity.

The Lyric has served our community as a movie house, house of worship, performing arts venue, gathering place, educational center, a retail center with shops offering a variety of products and services, a window to world cultures, and a place to escape everyday life.

The thriving Lyric we now know is a testament to you, our community. The Lyric was not always as beautiful and comfortable as it is today. Through the years, there have been many behind-the-scenes moments of high anxiety, and the community joined together to serve and support this historic treasure.

We are not just celebrating a hundred-year-old building. We celebrate you, our community. The Lyric was built for the community, and the community has come together time and time again to preserve and protect this historical gem and cultural resource.

Heartfelt words of gratitude will never be enough to properly thank every person who has served, volunteered, thoughtfully donated, purchased a ticket, attended a show or any event – THANK YOU!

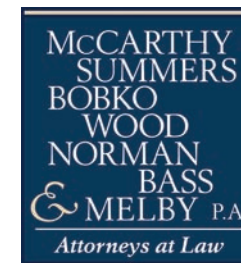
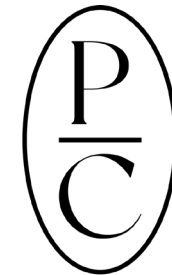
With a grateful heart,

Kia Fontaine
President / CEO

The Lyric Theatre's Mission *"To provide the community with a home for the performing arts that entertains, educates, and stimulates the growth of artistic integrity and experience for everyone."*

SHOUT OUTS!

The Friends of the Lyric
would like to thank our partners.



**MARTIN
Arts**

LOCATED IN HISTORIC DOWNTOWN STUART
Riverwalk
CAFE & OYSTER BAR



We couldn't do it without you.

Advertiser Index

Support Our Supporters

A.C.T. Studio Theatre	34
Allengang Entertainment Presents	7
Ana Capri Activewear	66
Argento Jewelry	66
Artist for a Cause, Broadway: Lloyd Webber & More	55
Atlantic Classical Orchestra	8
The Barn Theatre	57
The Community Foundation Martin-St. Lucie	64
Downtown Business Association of Stuart and Stuart Main Street	58
DrummersOnly Drum Shop	51
The Elliott Museum	9
The Gafford	68
Humane Society of the Treasure Coast	8
J-J-J Jenny and the Pets	55
Just Gold Jewelers	51
Little Lights Dentistry	6
MartinArts	57
Martin Fence Company	53
Palm City Social	68
Panthera Publishing	55
Patty Downing Interiors	51
Rare Earth Gallery	53
Saelzer/Atlas Wealth Management Group	39
South Florida Orthopaedics & Sports Medicine	52
Stuart Main Street Market on Main	53
Water Pointe Realty Group	67

A Decade of Smiles



For the past 10 years, Little Lights Dentistry has been providing free dental care for uninsured, low-income children from their first birthday through high school graduation. We help children eat, sleep, learn, and laugh without pain because no child should go to bed with a toothache.

Join us in celebrating 10 years of providing free pediatric dental care by becoming a **Bright Smile donor with a gift of \$10, \$100, \$1,000, or a custom amount.**

Every contribution protects a child's smile and brightens their future.



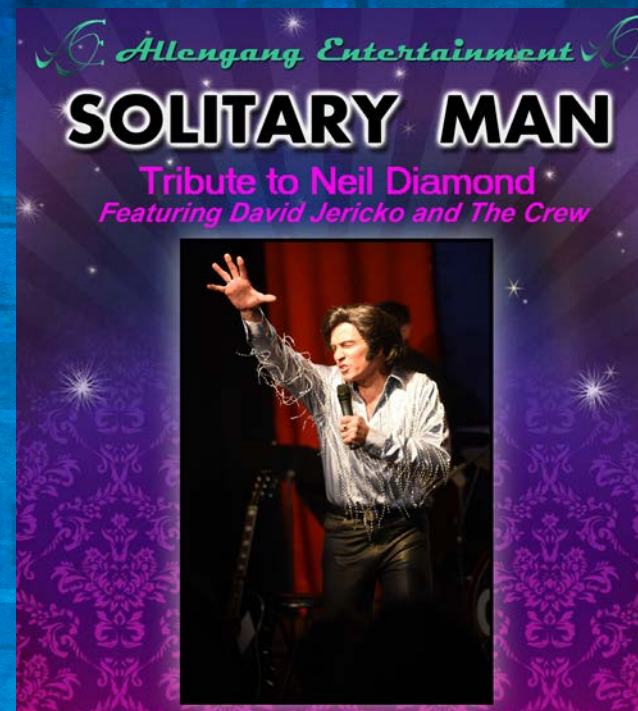
Scan here with your phone to make your donation



For more information, please visit
www.littlelightsdentistry.org
Give us a call at (772) 223-9781.

1300 East 10th Street, Suite B
Stuart, FL 34996

Allengang Entertainment



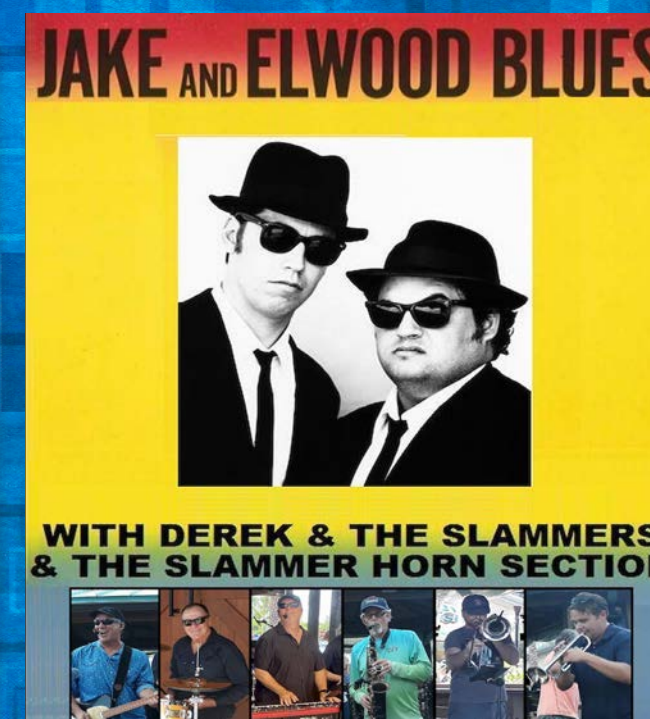
FEB 26, 2026 • 7pm



MAR 19, 2026 • 7pm



APR 23, 2026 • 7pm



MAY 21, 2026 • 7pm

Tickets: Lyric Box Office 772-286-7827 • www.LyricTheatre.com

2026 Season

Atlantic

CLASSICAL ORCHESTRA

DAVID AMADO, MUSIC DIRECTOR

Borrowed & Blue

Jan 22, Vero Beach, 7:00 PM

Jan 23, Stuart, 3:30 PM & 7:30 PM

Weill Suite from "Three Penny Opera"

Saint-Saëns Piano Concerto No. 5, op. 103 ("Egyptian")

Gershwin/arr. Bennett Porgy and Bess: Symphonic Picture

Tao Lin, Piano

Town & Country

March 12, Vero Beach, 7:00 PM

March 13 Stuart, 3:30 PM & 7:30 PM

Copland Appalachian Spring

Paul Frucht Finding Religion

Beethoven Symphony No. 6, op. 68 ("Pastorale")

Leonid Sigal, violin

Julian Schwarz, cello

An Extraordinary Musical Experience



David Amado



Hina Khoung-Huu



Leonid Sigal



Julian Schwarz

Into the Night

Feb 12, Vero Beach, 7:00 PM

Feb 13, Stuart, 3:30 PM & 7:30 PM

Mussorgsky/arr. Rimsky Korsakov Night on Bald Mountain

Prokofiev Violin Concerto No. 2, op. 63

Tchaikovsky Sleeping Beauty: Suite, op. 66a

Hina Khoung-Huu, violin

Themes & Variations

April 9, Vero Beach, 7:00 PM

April 10, Stuart, 3:30 PM & 7:30 PM

Brahms Variations on a Theme of Haydn, op. 56a

Mozart Concerto No. 4 in Eb major for Horn, K. 495

Hindemith Symphonic Metamorphosis of Themes by Carl Maria von Weber

Karen Schubert, horn

Subscriptions and Single Tickets on Sale Now

Box Office: 772.460.0851 • AtlanticClassicalOrchestra.com

Empire & Elegance

DARE TO DISCOVER IT ALL

ON EXHIBIT THROUGH APRIL 30, 2026



SCAN TO SEE EXHIBITS

"Wonderful Things..."

The Return of KING TUT



THE FABERGÉ IMPERIAL EGG Collection





Step into a world of royal elegance and explore over 50 stunning replica Fabergé Imperial Eggs, each one revealing a hidden treasure within!

PROUDLY SPONSORED BY

The Lichtenberger Family Fund

Henry & Rachelle "Rocky" Grady,

Bill & Carole Hauke,

The Herold-Cadorete Family,

and Ray & Peg Hirvonen Foundation



PROUDLY SPONSORED BY

The Herold-Cadorete Family,

Jim & Joanne Ritchie,

Fred & Patricia Bartlett,

Brian Foss & Dennis Fruitt

and Xavier Quinones

Walk into a breathtaking exhibition featuring spectacular replicas of prized artifacts from the tomb of Tutankhamun.

ELLIOTT MUSEUM | 825 NE OCEAN BLVD, STUART, FL 34996 | 772.225.1961 | HSMC-FL.COM



HUMANE SOCIETY of the Treasure Coast, Inc.

NO KILL. NONPROFIT. FOR THE ANIMALS.

WE ARE RENOVATING!

The Humane Society of the Treasure Coast is renovating, and we're inviting YOU to be part of the change! These improvements to our adoption center and customer service areas will help us better support both people and pets within our community.



Leave a legacy by supporting the Humane Society of the Treasure Coast. Our capital campaign offers meaningful naming opportunities within our new, state-of-the-art shelter that lets you make a lasting impact. To learn more, contact our Development Department at 772-600-3216 or Development@hstc1.org.



8 The Friends of the Lyric, Inc. is a 501(c)(3) not-for-profit organization



**Don Was
& The Pan Detroit
Ensemble**
February 15 • 7:00pm

Was Happenin'?

From legends to tributes and returning favorites, don't miss a second of the entertainment as The Lyric wraps up 2025 and springs into 2026.



Sister Sadie *January 9 • 7:00pm*

With a shared passion for their craft and a dedication to excellence, Sister Sadie is more than a band—they are a movement, carrying the torch for bluegrass music into the future while honoring its rich traditions.



Paul Thorn *January 10 • 7:00pm*

An American Southern rock, country, Americana and blues singer-songwriter, whose style is a mix of blues, country and rock.

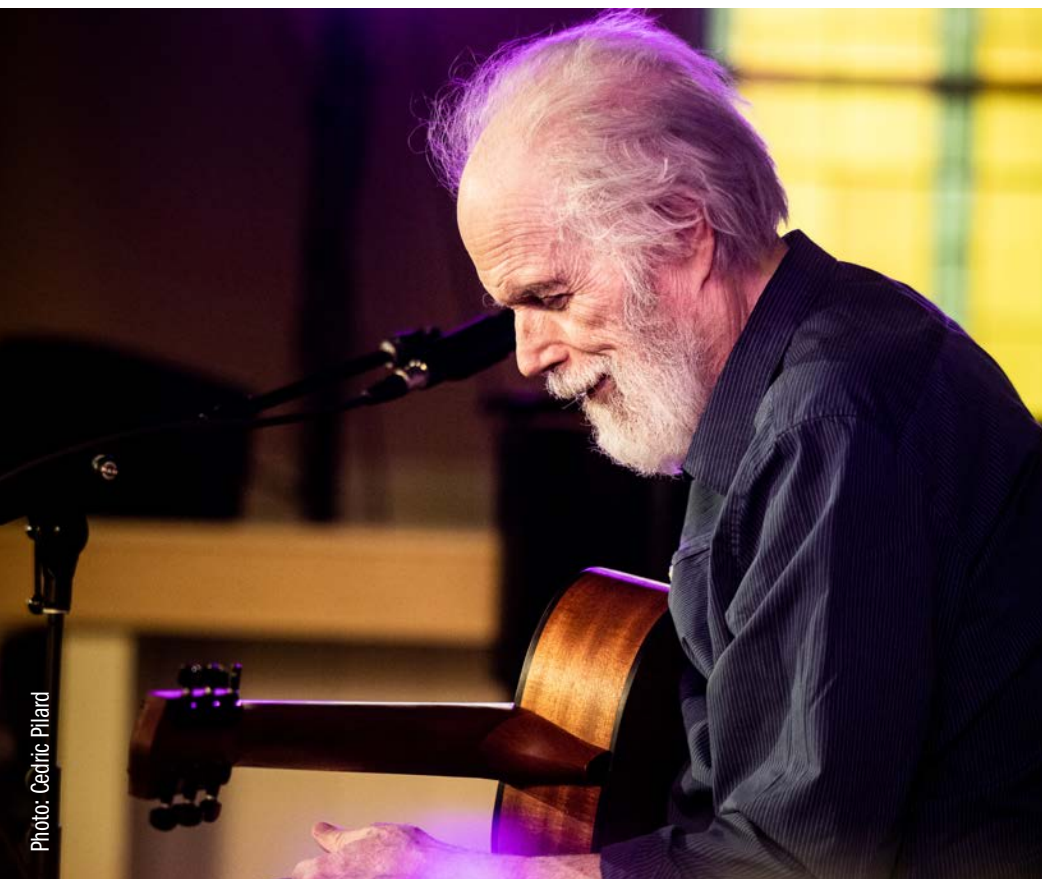
**The Phantom
of the Opera's
Jeremy Stolle:
No More Talk of
Darkness**

January 13 · 7:00pm

Jeremy is a Phantom veteran with over fifteen years of experience wearing the mask. You will hear Phantom like you never heard before.



Photo: Cedric Pillard



Leo Kottke

January 15 · 7:00pm

The American acoustic guitarist is known for a fingerpicking style that draws on blues, jazz, and folk music, and for syncopated, polyphonic melodies.

**Steve Solomon's
From Brooklyn
to Broadway...
The Therapy
Continues**

January 14 · 7:00pm

From the creator of *My Mother's Italian, My Father's Jewish & I'm in Therapy*, Steve continues his defense against those who tried to drive him into therapy and succeeded.



the therapy continues...



Photo: Jim Hartzell

Selwyn Birchwood

January 16 · 7:00pm

The American blues guitarist, vocalist and songwriter returns for an evening of electric swamp funk'n' blues defined by raw and soulful musicianship.

Jesse Cook

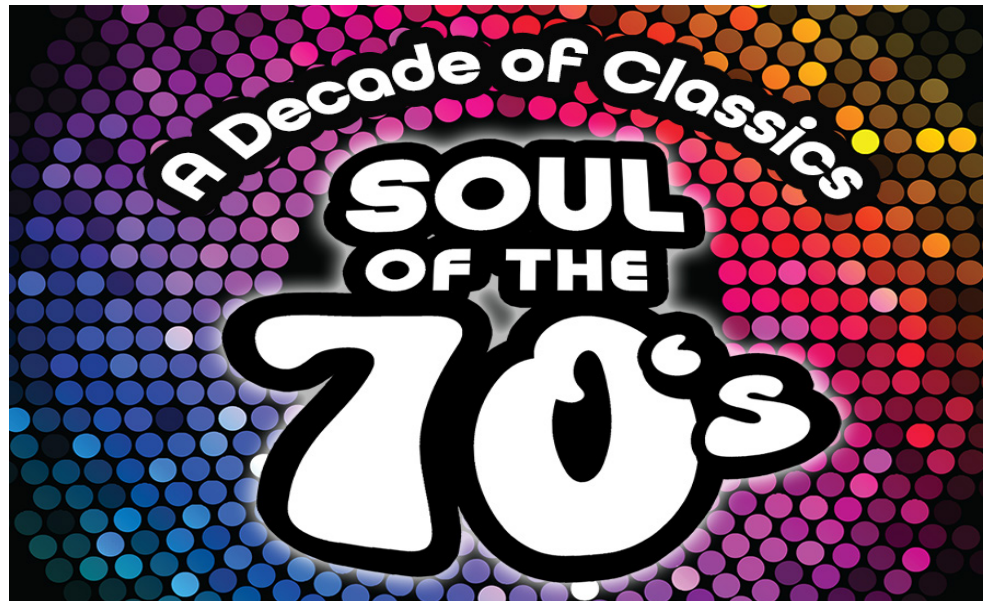
January 17 • 7:00pm

With his innovative blend of flamenco, classical, jazz, and world beat, Jesse Cook creates a musical tapestry that is both timeless and cutting-edge.



Three American Troubadours January 20 • 7:00pm

This production celebrates the lives and careers of James Taylor, Carly Simon and Carole King - 3 iconic American singer/songwriters whose memorable hit songs continue to offer ageless inspiration.



Soul of the 70's January 19 • 7:00pm

Las Vegas headliners, conductor Mario Longo and vocalists Tyriq Johnson and Genevieve Dew, are your hosts on a journey through the unforgettable music of the 1970's. Hear all the hits that defined a generation, and created the soundtrack of our lives!



The Weight Band – Featuring members of The Band and the Levon Helm Band January 22 • 7:00pm

The songs The Band created have pleased audiences for decades, and The Weight Band has found a way to honor the legacy while creating its own sound with original works that complement that legacy.

John Pizzarelli & Catherine Russell present Billie & Blue Eyes

January 24 • 7:00pm — These two masterful talents pay homage to Frank Sinatra and Billie Holiday. You'll hear their music like never before, with familiar favorites and surprising hidden gems.



Jon Cleary and The Absolute Monster Gentlemen January 29 • 7:00pm

After thirty-five years of being at the forefront of the ever-evolving musical landscape of New Orleans, Grammy Award-winner Jon Cleary is hitting the road to bring audiences his unique blend of New Orleans funk, soul, and R&B.



Human Nature – Back to the Sound of Motown January 28 • 7:00pm

The Australian band has earned their place as one of the world's finest pop-vocal groups of the modern era and have become known around the globe for their distinctive harmonies and stellar live shows.



Creedence Revived January 30 • 7:00pm

Composed of four of Chicago's and LA's most talented and eclectic musicians, Creedence Revived has rapidly become one of the most highly sought after tribute bands in the world.



Mutts Gone Nuts – Unleashed January 31 • 3:00pm & 6:00pm

Come see a dozen of the world’s most talented four-legged performers, in an uproariously funny, comedy dog spectacular that is leaving audiences everywhere howling for more!



REZA – Edge of Illusion

February 1 • 7:00pm

More than a magic show, REZA infuses state of the art production elements, masterful comedic timing, and numerous interactive and inspirational moments, allowing the audience to experience the magic first hand.

Jersey to Broadway

February 4 • 7:00pm

The Life and Music of Frankie Valli
starring Mark Maynard.



**Black Tie Optional –
A Tribute to
Michael Bublé & Beyond**

February 14 • 7:00pm

For anyone searching for a captivating escape to a golden era of music, this is the kind of show that ties it all together starring Kerst Lehmann.



Don Was & The Pan Detroit Ensemble February 15 · 7:00pm

Don Was & his Pan-Detroit Ensemble bring the distinctive musical flavor of his Motor City hometown marked by a funky, urban rawness and bone-deep grooves.



Under the Streetlamp February 17 · 7:00pm

Under the Streetlamp is an electrifying ensemble of Broadway luminaries and world-class musicians who light up the night with an unforgettable blend of classic doo-wop, Motown and rock 'n' roll hits.

Marty Stuart & His Fabulous Superlatives February 18 · 7:00pm

The legendary singer, musician and songwriter is in the Country Music Hall of Fame, has five Grammys, one platinum album and five gold and boasts six Top Ten hits. Along with his secret weapon, the Fabulous Superlatives, are transforming country songs into a tangible experience!





Sixtiesmania®

February 19 · 7:00pm

Covering all the great groups and songs that became an iconic backdrop to that turbulent decade, Sixtiesmania takes the audience on a musical roller coaster from The Beatles to The Doors and everything in between.

Ana Popovic

February 21 · 7:00pm

The award-winning, hard-touring, guitar slinger blends smoking electric funk and slide guitar, jazzy instrumentals and a tight blues groove with soulful, feminine vocals.



Tom Papa

February 20 · 7:00pm

With more than 20 years as a stand-up comedian, Tom Papa is one of the top comedic voices in the country, finding success as an actor, host, and author, in film, TV, radio and podcasts as well as on the live stage.

The Outlaws

February 22 · 7:00pm

For more than 40 years, the Southern Rock legends have celebrated triumphs and endured tragedies to remain one of the most influential and best-loved bands of the genre.



Hotter Than July - Tribute to Stevie Wonder

February 24 • 7:00pm

Celebrating one of the most extraordinary and versatile artists in music history, Hotter Than July is a Stevie Wonder tribute band that brings infectious energy and soulful vibes to every performance.

HOTTER THAN JULY

Stevie Wonder Tribute



Stayin' Alive – A Tribute to the Bee Gees

February 27 • 6:00pm & 8:30pm

This quintessential tribute band captures the excitement of live performance and the tender subtleties of the human voice!



North Mississippi Allstars February 25 • 7:00pm

The dynamic blues-rock band unearths the soul of the Mississippi hill country with every riff and beat. Their electrifying performances fuse tradition with modern energy.

Spyro Gyra February 28 • 7:00pm

Fusing jazz, R&B, funk and pop, Spyro Gyra has created a unique sound over the past 50 years performing more than 5,000 shows on 5 continents, releasing 31 albums and selling more than 10 million albums.





Neil Berg's 100 Years of Hollywood March 2 • 7:00pm

From Judy Garland to Lady Gaga, Neil Berg brings a new musical celebration of Tinseltown with a cast of Broadway's finest singers.

Photo: Tom Meinhold



Alfreda Sings Aretha March 9 • 7:00pm

Alfreda's soaring vocals with a 4-piece rhythm section, three backup singers and a three-piece horn section pay tribute to the Queen of Soul.



Photo: Tish Brubeck

The Brubeck Brothers Quartet March 4 • 7:00pm

Brubeck Brothers Quartet attains that rarefied level where music is both relaxed and expressive, and their joy in its creation is contagious. Nothing out there that comes close to their unique brand of inventiveness.

Rhinestone Cowgirls

March 12 • 7:00pm

Paying homage to the iconic female vocalists of yesterday and today, the Cowgirls perform fresh arrangements of classic and contemporary country hits.



Pat Metheny Side-Eye III+

March 14 · 7:00pm

The American jazz guitarist and composer's style incorporates elements of progressive and contemporary jazz, Latin jazz and jazz fusion. He has three gold albums and 20 Grammy Awards, and is the only person to have won Grammys in 10 categories.



*Southern
California's
Legendary*

*Hotel
California*
A Salute to the
EAGLES
www.hotelcal.com

Hotel California

March 20 · 7:00pm

A spirited blend of originality and the pursuit of excellence have taken Hotel California "A Salute to the Eagles" to a level of recognition normally reserved for Gold and Platinum recording artists.

Wishbone Ash featuring Argus Live

March 15 · 7:00pm

This classic, British rock band enjoys a unique place in popular music history with their distinctive brand of melodic rock coupled with the use of twin lead guitars.

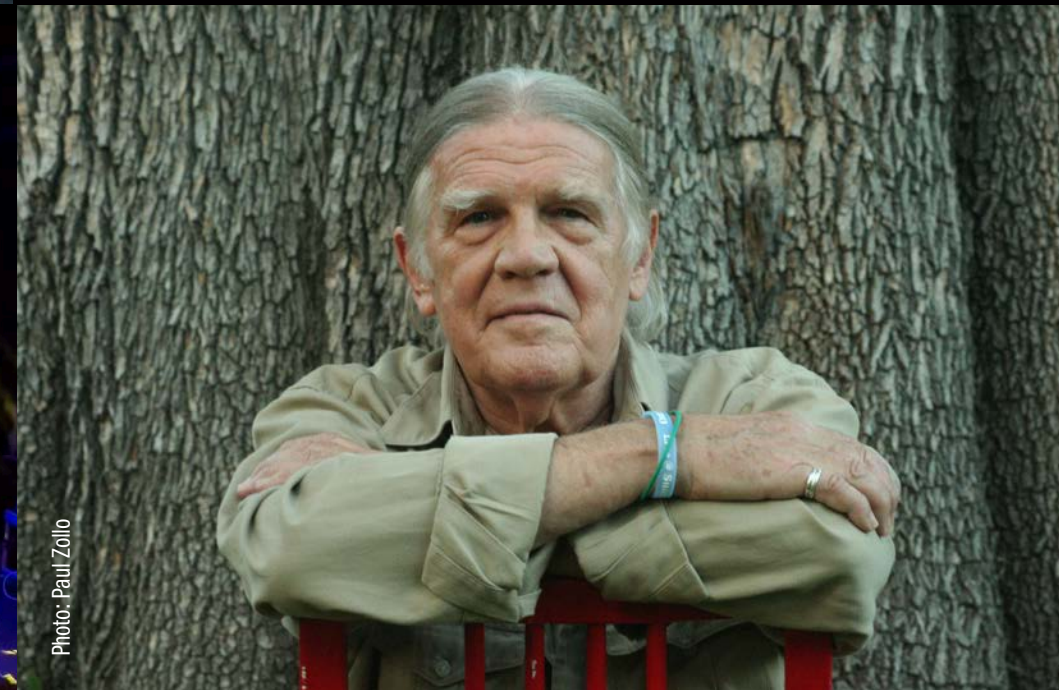


Photo: Paul Zollo

Behind the Lens: California Dreamin' with Henry Diltz

March 21 · 7:00pm

In the world of music photography, Henry Diltz occupied the upper strata of legendary photographers.



The Bronx Wanderers

March 18 · 4:00pm & 7:00pm

Buckle your seat belts because The Bronx Wanderers deliver a "Back to the Future" type of rocket fuel in a high-octane 50s, 60s and 70s Rock N' Roll experience!



The Youth Arts Celebration

March 22 · 7:00pm

Prepare to be amazed by Treasure Coast student performers in the 9th annual Youth Arts Celebration. Young entertainers, grades 12 and under, will take to The Lyric stage in this dynamic talent showcase to represent their passions and dedication through various forms of performing arts.



A Tribute Celebrating the Legends of Motown March 26 • 7:00pm
An electrifying tribute show that pays homage to the legendary sounds of The mighty Temptations and The soulful Four Tops.



Photo: Danny Clinch

Charlie Musselwhite Duo April 8 • 7:00pm
With music as dark as Mississippi mud and as uplifting as the blue skies of California, this singular blues harp player, singer, songwriter and guitarist is honored as a true master of American classic vernacular music.

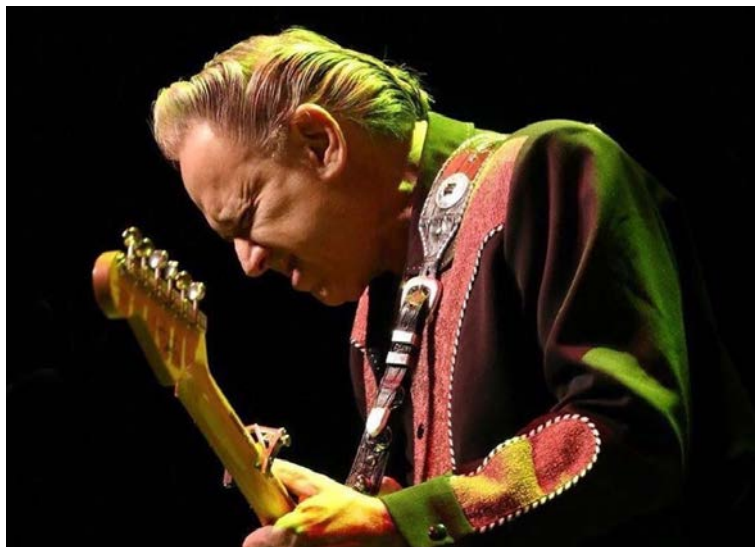


Photo: Jamie Harmon

Squirrel Nut Zippers ‘In The Afterlife’ April 3 • 7:00pm
Celebrating 30 Years of Hot with their hybrid stew of Southern roots music, New Orleans Jazz, Vaudeville, blues and a healthy touch of irreverence.



Let's Hang On April 9 • 7:00pm
Capturing the vocal virtuosity, tight harmonies and crisp choreography that made The Four Seasons on of the greatest vocal groups of all time.

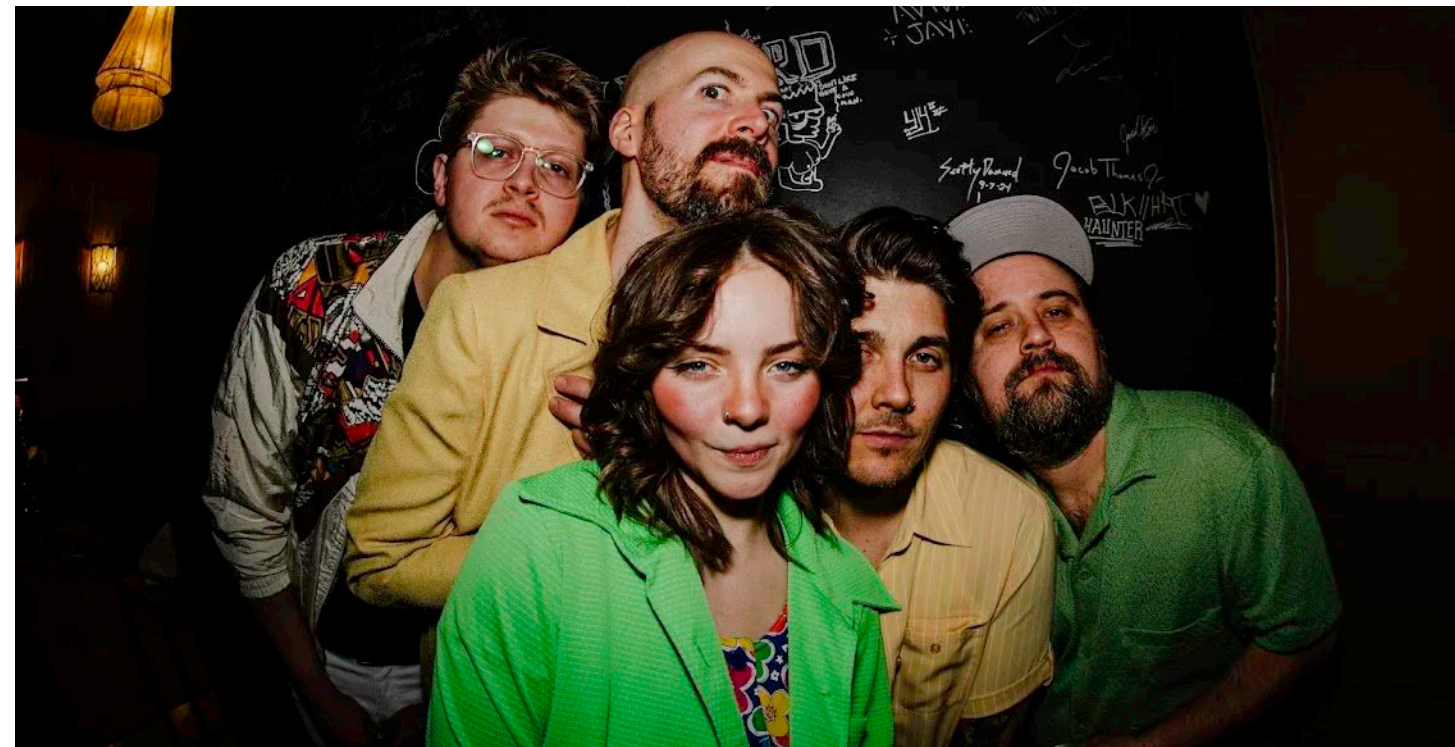


Jimmie Vaughan & The Tilt-A-Whirl Band April 12 · 7:00pm
Jimmie Vaughan is a guiding light who has dedicated his life to making sure the blues not only stays alive, but remains full of life and an inspiration to all who listen. It's a spirit he holds close to him, and for almost 60 years, Vaughan isn't about to stop now.

Long Time Gone April 16 · 7:00pm
Celebrating Crosby, Stills and Nash, the folk/rock group performs all the songs of peace and love that you remember, in a way you've never heard accompanied by amazing harmonies.



Forjoury May 8 · 7:00pm
Bringing together the timeless hits of two iconic rock bands, Foreigner and Journey, the show is a mesmerizing tribute to the classic tunes that have captured the hearts of millions.

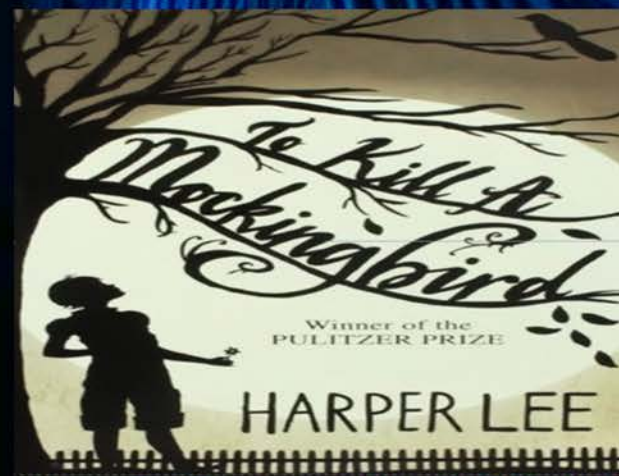


TAE & The Neighborly May 9 · 7:00pm
Hailing from Green Bay, Wisconsin, TAE & The Neighborly seamlessly blends the best of soul, R&B, pop, and rock through vibrant instrumentation and TAE's unforgettable vocals.



Direct from Detroit! The Motortown All-Stars May 22 · 7:00pm
These vocalists have each performed with Motown legends on stages around the world and now they've come together to deliver all the biggest Motown hits, complete with impeccable harmonies, flashy outfits and that dazzling choreography.

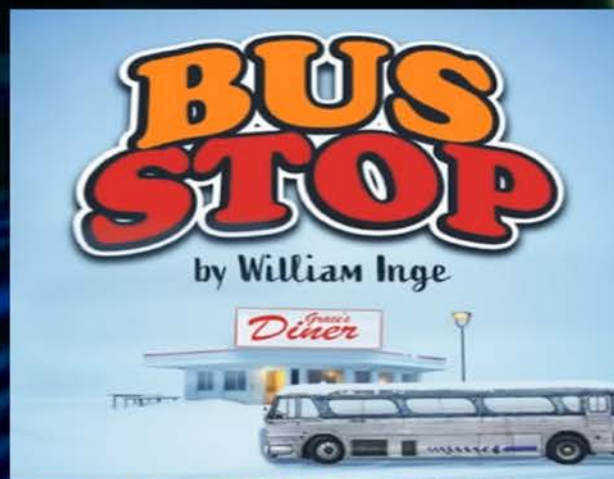
ACT Studio Theatre



FEB 13 - MAR 1



APR 10 - 26



JAN 9 - 25



MAR 13 - 29



MAY 8 - 17

ACT Studio Theatre • 2399 SE Ocean Blvd., Stuart
www.actstudiotheatre.com • (772) 932-8880



ALL SHOWS



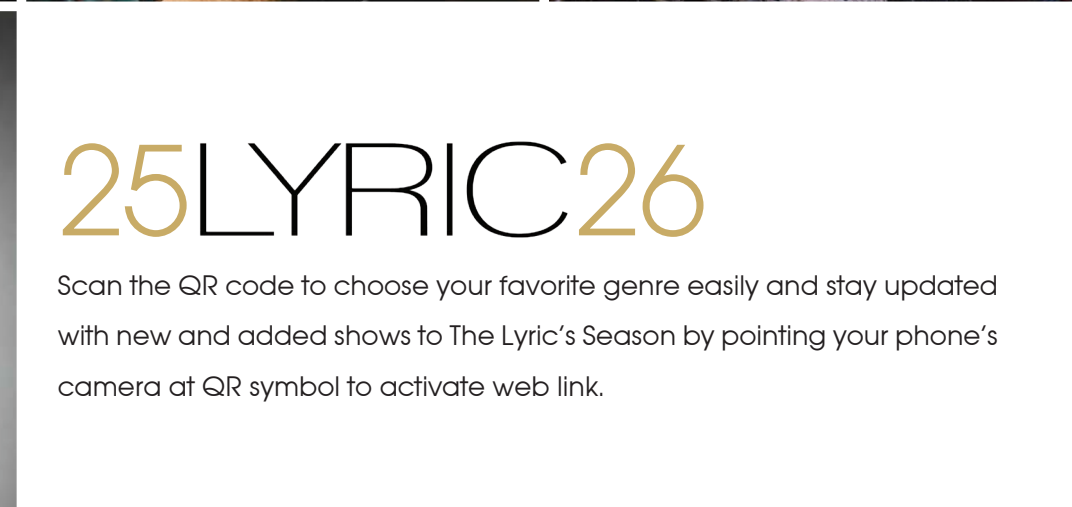
FEELING THE BLUES



JAZZ & FUNK

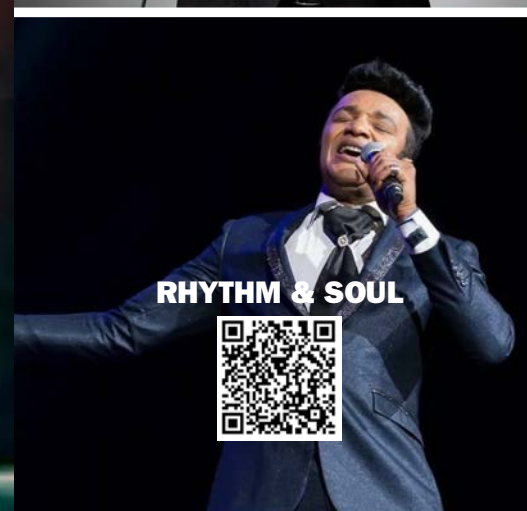


FUNNY BUSINESS



25LYRIC26

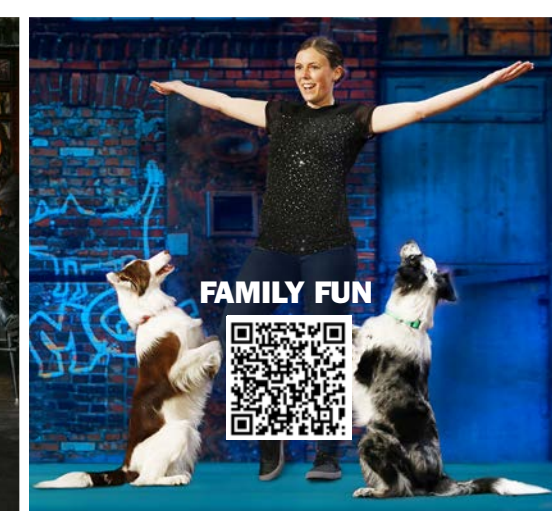
Scan the QR code to choose your favorite genre easily and stay updated with new and added shows to The Lyric's Season by pointing your phone's camera at QR symbol to activate web link.



RHYTHM & SOUL



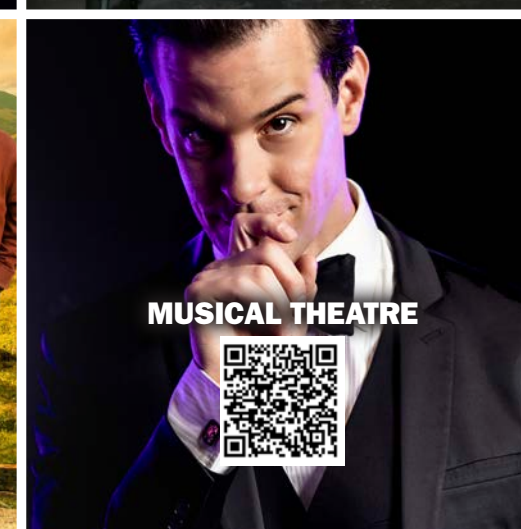
AMERICANA & FOLK



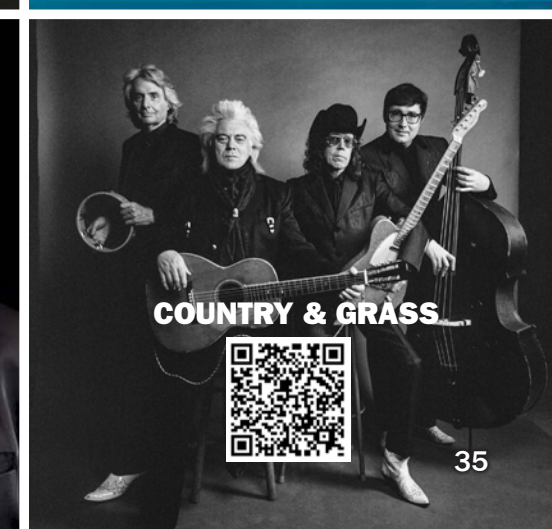
FAMILY FUN



ROCK & ROLL



MUSICAL THEATRE



COUNTRY & GRASS





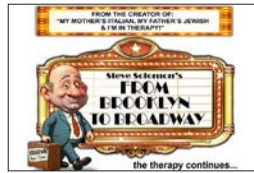
JAN 9



JAN 10



JAN 13



JAN 14



JAN 15



JAN 16



JAN 17



JAN 19



JAN 20



JAN 22



JAN 24



JAN 28



JAN 29



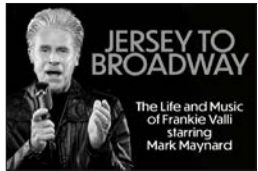
JAN 30



JAN 31



FEB 1



FEB 4



FEB 14



FEB 15



FEB 17



FEB 18



FEB 19



FEB 20



FEB 21



FEB 22



FEB 24



FEB 25



FEB 27



FEB 28



MAR 2



MAR 4



MAR 9



MAR 12



MAR 14



MAR 15



MAR 18



MAR 20



MAR 21



MAR 22



MAR 26



APR 3



APR 8



APR 9



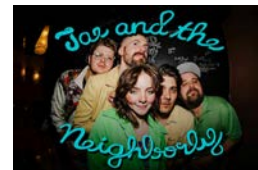
APR 12



APR 16



MAY 8



MAY 9



MAY 22

**Jon Cleary
& The Absolute
Monster
Gentlemen**
January 29



NEW SHOWS **ADDED**

**North Mississippi
Allstars**
February 25



Hotel California
March 20



**Squirrel Nut
Zippers
'In The Afterlife'
Celebrating 30
Years of Hot**
April 3



**Charlie
Musselwhite
Duo**
April 8



CELEBRATING 25 YEARS *in our community*

For 25 years, we have worked with clients and their other professional advisors – including attorneys and accountants – to create comprehensive wealth management plans designed to make the best use of their wealth today and help ensure its endurance for future generations. We will do the same for you.

Gerry Saelzer Managing Director, Senior Vice President, Investments
Jeff Atlas, CFP® Managing Director, Senior Vice President, Investments



309 SE Osceola Street, Suite 300 • Stuart • 772.221.3374 • www.SAWMG.com
 CFP Board owns the marks CFP®, CERTIFIED FINANCIAL PLANNER™, and CFP® (with plaque design) in the U.S. Investing involves risk and investors may incur a profit or a loss.
 ©2024 Raymond James & Associates, Inc., member New York Stock Exchange / SIPC

100 years...

Weaving together the history of The Lyric Theatre over the past 100 years is a story of community, connection & creativity. A community that joined together to support and save this historic treasure is our story. The thriving Lyric we now know is a testament to our Community.



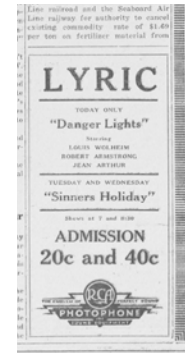
1913 The Stuart Times printed on its first page an article telling of the plans of JC "Judge" Hancock for his "new" theater. The first Lyric was built on Osceola Avenue near Belle Flora what is now Colorado Avenue.



March 15, 1926 The Lyric opened its doors with a special presentation featuring an overture by Mrs. Hancock on the pipe organ and screening of *Skinner's Dress Suit*. With so much excitement from the community, The Lyric was packed to capacity, and large numbers of people were turned away. The Stuart Daily News reported, "Judging from the attendance at the theatre, The Lyric is going to be a mighty popular place. It is indeed an ideal playhouse and one that every resident of Stuart might well be proud of."



1930 Newly equipped with a RCA Photophone sound picture machine, *Danger Lights* was screened as the first "talkie." Admission was 20 cents for the 7:00 pm show and 40 cents for the 8:30 pm show.



1941 Katharine Hepburn recited Edna St. Vincent Millay's "The Harp Weavers" as part of the annual Kiwanis Minstrel show at The Lyric.

1956 Greene's Dry Goods expanded into the space next door, formerly occupied by the Lyric Pharmacy, for its shoe department.



1957 Six refugees from Hungary brought to Stuart by the Catholic Relief Services in front of a Taxi Company housed in the Lyric storefront.



1914 Stuart's first theater opened its doors for its first performance. The auditorium was forty feet square with a seating capacity of 250 people. With no electricity in Stuart, the theater had its own dynamo and gasoline engine and made its own electricity.



1917 The Lyric was moved to the little wooden structure on Osceola Avenue. C. Frederick "Fred" Hancock (JC Hancock's son) was called away to the service to serve in the war, ending the motion pictures for Stuart.



1925 Built as a silent movie house with a small stage for Vaudeville acts, The Lyric was the largest building in Martin County. It was built for \$100,000 by Judge John Hancock and his wife, Mamie. The Lyric Building, as it was called, had a 900-seat theatre and featured retail storefronts, including Bailey's Drug Store with an eleven-foot-long soda fountain counter. Ventilation in the Lyric Theatre building was the most modern available, known as the Artic Nu-Air system.



1926 The Lyric under construction during a parade for Governor Martin as part of the celebration of the establishment of Martin County.



1936 The Hancocks fell on hard times during the Great Depression and sold The Lyric to the bank.

1937 Over the following years, The Lyric was leased out to the Sparkes Theater chain and various community groups to present traveling vaudeville shows, news weeklies, and movies.



1949 People line Flagler Street to watch the Fourth of July parade.



1950s





1978 The Lyric was purchased by the New Life in Christ Church, which used the theatre for weekly worship services. By 1987, the church wanted to move, and the theatre was put up for sale.



1988 Friends of the Lyric purchased the building from the New Life in Christ Church at purchase price of \$300,000, with a \$5,000 deposit required to finalize the contract. Roy Laycock went door to door seeking out ten \$500 donors, and within 24 hours, the funds were raised.

1989 Friends of the Lyric became a 501(c)(3) not-for-profit organization.

1993 The Lyric Theatre was listed on the National Register of Historic Places.



1996 New Orchestra seating was installed and administrative offices constructed.

1999 A vacant lot to the north of The Lyric was purchased for a future expansion of the stage and backstage areas.

2004 Many rummage sales and fundraisers were held on this lot to raise funds for the expansion and in 2004, the project began with support and commitment from donors, patrons and community partners.

1987 The Lyric was put up for sale. Seen as an anchor and much needed entertainment center, Roy Laycock entered into a contract to purchase the building. Believing the community should own The Lyric, Roy gathered a group of people with fundraising and operational backgrounds to ignite and support his vision.



1991-1995 With grant funding from the State of Florida, National Endowment for the Arts and local community funding and support, The Lyric underwent needed stabilization and repair: new roof and air-conditioning systems, ADA Compliance alterations, Box Office construction, marquee improvements and remodeling of the lobby, restrooms and dressing room.

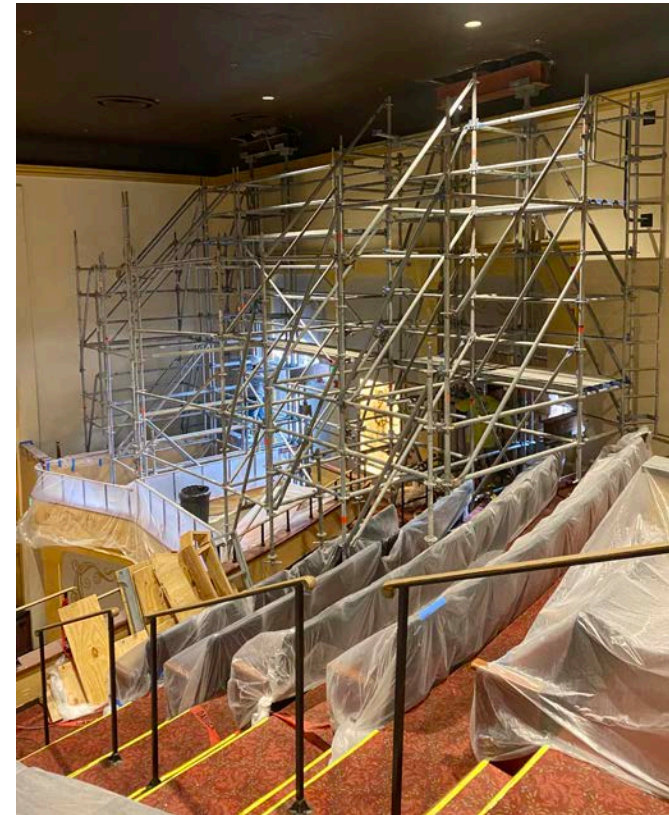


2001 The balcony of the theater was remodeled for the installation of new balcony seating, an elevator was installed and refurbishment of the lobby and restrooms.



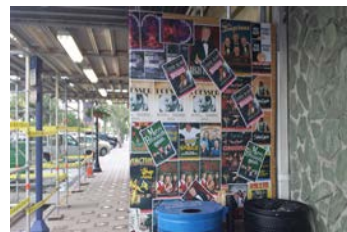


2005 The Lyric expansion was completed, enlarging the stage 16 feet and adding a backstage equipped with a restroom and office/storage areas.



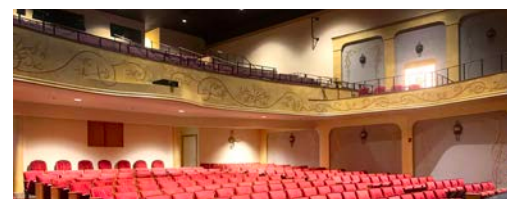
October 1, 2021
The Lyric reopened.

2014 The Lyric was closed for substantial renovation as part of the *Love The Lyric* Capital Campaign. The campaign resulted in substantial renovations to the lobby and box office, new exterior and interior entrances, new orchestra seating, new sound system and architectural elements were added to the walls and columns.

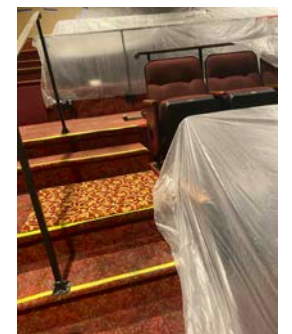
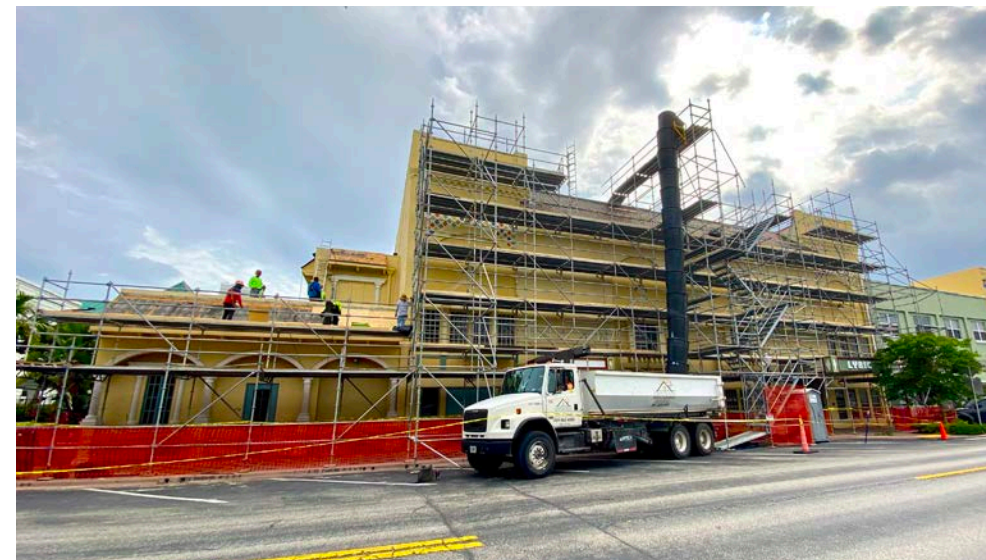


March 2020 The Lyric was shuttered due to the COVID-19 pandemic. Enough funds had been saved to perform critical building repairs and maintenance. The project, though extremely essential to the preservation had to be put on hold.

2015-16 The Lyric's proscenium was ornamented in an Art Nouveau style. The elegant design, artistry and craftsmanship of the trompe l'oeil art technique were added throughout The Lyric including the balcony parapet, doorway transoms and interior theatre walls.



2021 With amazing community support for *The Next Act* Capital Campaign, The Lyric underwent critical structural and building renovations including substantial structural column and beam replacement/repairs, new roof, new air conditioning and restoration of the marquees.



March 2021
The Lyric has been closed for one year.



2026 The Lyric celebrates **100 years of community, connection & creativity.** Here's to her future...

Director’s Circle

The following donors have generously committed to providing sustained support of The Lyric over a five-year period as part of the Director’s Circle program:

Bonnie & Wayne Barski
Robert P. Bauman
Joseph & Theresa Beditz
George F. Bellows & Deborah J. Dodge
Anita Brush & Dr. Ron Yedloutschnig
Frank M. Byers Jr.
Don & Becky Campagna
Ethel Christin
Susan & Michael Copperman
Mary Laub Cowan
Bill & Audrey Crandall
Bob Crandall & Ellyn Stevenson
Anthony & Ingrid DeLuca Family
Bill & Cassandra Dittmar
Sherry Dunn
Stephanie Flicker & Peter Freudenberg
Kia Fontaine & Luca Bradley
David M. Gallus
Paul & Annette Gartzman
The Howard Gilman Foundation
Rev. Allardyce A. Hamill & James Hamill
Debra Hamilton & Don Williams
Karen Lauria Hendry
Mrs. Elizabeth Herold
The Herold Family
Ray & Peg Hirvonen Foundation
Paula Hundt
Kempe Law Estates Tax Wealth
Todd & Margaret Laycock

The Lichtenberger Foundation
Kristofer & Melanie Lyon
Bob & “Ralf” Massey
Wayne & Lianne Maxson
Katherine McGovern
Eileen Morris & Bob Griffin
Dr. & Mrs. Edward Overfield
Gene & Rilla Pfothenhauer
Janet Prindle Seidler
Douglas & Carol Rearick
The Rev. & Mrs. David A. Rich
Victor & Joan Rivas
Ken & Sally Schaeffer
Rabbi Dannel Schwartz & Suzi Romanik
Bruce Scott & Michele Bragg
The Sear Foundation
Sherri & Geoff Seiber
Wm. & Fran Slat
Earl & Sharon Smith
May Smyth
Carol C. Spera
Mike & Judy Tenzyk
Mr. & Mrs. Frank Tidikis
Harold & Lois Walsh
Felipe Wells & Sevy Petras
Bill & Betty Werner
Gloria Whittle & Stan O’Hoppe
The Wong Family Foundation

Thank you to all those generous contributors who have donated to The Lyric Theatre as of November 20, 2025. If we have inadvertently overlooked your name in this listing, please accept our sincere apology and notify our Development Director, Heather Long, at 772.220.1942, extension 209.

Diamond (\$5,000 & Up)

Rick Carroll Insurance Company
Richard & Karen Dakers Charitable Fund
Jeananne & William B. Harris
Patty & Bob Hendrickson
The Holt Family Foundation, Inc.
The Kahlert Foundation
Knight & Ann Kiplinger
Carolyn Metzger
Carolyn & Herbert Metzger Foundation
The Norris Family Foundation

Platinum (\$2,500 & Up)

Jim & Nancy Balow
Jim & Joanne Bintliff-Ritchie
Bob Cameron
Douglas & Suzanne Davis
Caterpillar Foundation
Stephen & Aida Fry
Juanita J. Henson
Susan & Paul Jones
The Black Marlin
McCarthy, Summers, Wood, Norman,
Melby & Schultz P.A.
Ebeth & Allen Peer
Ron & Karen Powell
Gail Rader
Robert & Louise Sanborn
Tom & Linda Schaefer
Tom Stewart
In memory of Daryl Swann
Robert & Sheryl Traub
James & Magalen Webert
Stanley J. & Laura G. Wiegand
Nancy & Richard Zappala

Gold (\$1,000 & Up)

Pat Arney
Suzanne M. Beers
Bill Boyes & Suzanne Martin
Morgan Brandt
Michael & Nancy Del Priore
Jonathan Deus
Patty Downing
Jim & Gerda Fletcher
Debra & Wayne Freihofer
Jenni & Joe Garone
Debbie George
Thomas & Sally Hamby
Mr. & Mrs. Thomas C. Hartzog
Mike Hill & Winnie
Douglas & Melinda Jennings
Greg Lyden & Cathy Tormey
James H. LoPrete
Alex & Sharon Mason
Bill McMillen
Trust Me
Mark Miller & Andrea Carpenter
Alice & Allan Mostoff

Paul & Meagan Mroz
Joe Mulvehill
Vianne Nichols
Judith Nightingale & Franklin Cole
Raymond “Tony” & Karen Noga
Elliot M. & Sheryl Paul
Bob & Martha Perimian
Charlie & Sheila Perrin
Dr. & Mrs. Michael M. Raskin
Rick & Lynn Rasmussen
Michael Rodney
Daniel Stern
Ellyn Stevenson
Michelle Stuck
Davies & Gayle Tainter
Richard & Dorothy Talbot
Lucy & Dick Thomas
Johna Toppa
Kathleen Walgreen
John & Mallory Waterman
Nancy & Joe Wertheim
LynnAnn White
Jane & Jeff Witherwax
Walt Zeigler

Silver (\$500 & Up)

Scott & Steph Abeel
Harry Blot
Marc & Silva Brinkman
Stewart & Joan Buckle
Sue & Steven Chase
Jack & Geri Daly
Joe & Vicki Davis
Steve & Susan Dehnen
Dana & Kathy de Windt
Jim & Ellie Dobrowolski
Bruce Dudzic
Lee Elsey & Sally Bradford
Robert Fashano
Sirkka Firley
Peter Foley
Paul & Irene Garfinkle
Brad Gillman & Patty Dapontes
Mark & Janice Gold Family Foundation
Mary Graves
Robert L. & Connie L. Greene
Barbara Grimmer
Allen & Susan Herskowitz
The Ireland Family
Alan Jacobson
Charles Jung
Ned & Joyce Kenna
Deborah Kessler
George Kurlychek & Peggy Chase
Anne Marie & Steve Leonard
John & Laura Loesser
Ed & Helaine Lucente
Lucido & Associates P.A.
Greg Lyden & Cathy Tormey
Ted & Cindy Mandes
Rion & Brandon McAllister
John & Carolyn Mellaci
Susan Metzger

J. Scott & Susan Miller
Tyrone Monte
John Morris
Stephen & Kathleen Naughton
Judy Nelson
David Neufeld & Mindy Squeo
Bruce Neumann
Phyllis Olsen
Bill & Nancy Pembroke
Ross & Grace Pillari
Jill & Rich Preston
Gary & Joan Pyne
Linda & Richard Regius
Gaye & Richard Rohde
Robert Romeo
Scott Sade
Rosemarie Saraco & Robert J Banasiak
Randee Schatz
Lora H. Schwab
John Simoni
South State Bank
Gerhard & Katharina Stejskal
Ilene & Ken Stern
Patty & Drew Thompson
Ina Tornberg
Richard & Cheryl Turner
Gene & Judy VanCuren
Maryanne Virgadamo & Ed Desiderio
Ted & Sharon Weise
Wipeout Pests & Termites
Mark & Laurie Zabel

Bronze (\$250 - \$499)

Anis Y. Akrawi, M.D. & Carol L. Gesser
Armellini Express Lines Inc.
Marcia Balow
Virginia & Raymond Bargull
Sally Batz & Henley Sandidge
Linda & Gary Beagell
Dr. John P. Borneman
Dave & Shirley Bradley
Gail & Wally Brady
Gary Brookins
Michael J. Busha
George & Susan Cady
Garry Campe
JD Carrell
Keith & Lauren Carroll
Peter Carroll
Arlette Cataldo
Diane Cibuls
James & Mary Connell
Bernie Cook
Leslie Cuatt
Gary & Bernadette Debenian
Pat Deerin
Peter & Ruth Derow
Dr. Raul & Loretta Diaz
Micki & Lee Dion
Brian & Mary Dugan
Sharon Dugan & Scott Hughes
Lin Ezell
Mike Ferrier
Barbara Field

Marlys Freeman
Jim & Sally Friend
David Gentry
David Gittins
Jayme Golden
The David & Clair Gordon Foundation
Lois & Hadar Granader
Ken & Sheri Griffin
Ron & Lyn Hanlon
Frank Hayden
Michelle Haynes & David Funnell
Robert Hinton
Jack & Mary Louise Hogan
Kenneth Hooker
David Hopp
Louis & Melinda Houston
Karol Hufnagel
Jeff Imsdahl
Dawn Jackson
Bradford Johnson
Scott Johnson
Pamela & Glen Kay
Jeff Kelly
Paul & Shaun Kelly-Feinsinger
Jeremy Kensinger
David Koch
Fred J. Leonardo
Greg & Sharon Lewis
J.D. Lewis III
Sandi Lyman
Kenneth MacGillivray
Mark Matthews
Timothy McHugh
Steve & Pat McKessy
David Meisner
Dave & Mary Milmore
Bernard & Daphne Mustafa
M Ruth Neese
Cheryl & Michael Olivieri
Xavier Quinones
William Reineke
Pam & Ed Reuter
Lee A. Roney
The Rybovich Family
Dave & Karen Satur
Mike Schmidt
Edward Shapiro
Carol & Gary Silverman
Leslie & Barbara Smith
Mark & Kim Smith
Brad Stevens
Sandy & Philip Stevens
Teri Studiale
Greg & Delia Tardella
Irene & Mark Thaw
Richard & Peggy Thompson
Katherine Thropp
Ted & Pat Tiemeyer
Stephen & Janine Timm
William (Rick) Umbach
Frank & Julia Valente
Lawrence C. Warter
Samuel Weitz
Richard & Brenda Wilfong
Harvey Wilson & Joan Williams
Dwight & Gail Wilson

Family
(\$100 - \$249)

Susan Abair
Treasure Coast Accounting
Heidi & Bill Adams
Thomas Ahern
Charles Alaimo
Teresa & Paul Albiani
Wilson Alers
Samuel & Kathryn Alioto
Stephen Alois
Robert & Abby Alpers
Anita Alter
Alicia Andersen
Evan Anderson
Ralph Annunziata
Gretchen Anthony
Frank & Jane Antonucci
Bob & Barb Apley
Bob Arnold
James Arnold
Alicia Ashworth
Margaret Badaracco
Paul Balzano
Charles & Amelia Banino
Michael Banz & Kathleen Blaha
Dean & Karen Barnard
Elizabeth Barulic
Sandra Bastin
Mitch & Lynn Baumeister
Robert & Barbara Baute
Jonathan Bayer
Mary Bean
Scott Bean
Dan Beck
Alison Beckmeyer
Jorge Benitez
Albert Bennett
Ulrich Bernier
Barbara Berns
David & Genie Berry
The Best Family
Malcolm K. Beyer Jr.
Jack & Karen Bidosky
Roy Bizjack
Kathleen Blaha
Robin Blanton
Jo Ann & Horst Boettcher
Melanie Borman-Gluck
William Bosco
Jeff & Susan Bowen
Camille Bowers
Carolyn Brada
Jim & Jackie Bradley
Mickey & Sandy Bradley

Dorie Bradshaw
Janice Brands
Thomas Brendal
David & Linda Brewer
Amy Broderick
Audrey Brodie
Kim Brooks
Margaret Ann Brutvan
Jodi Bubla
Steve & Bettie Buck
Rosemary & Bill Buffington
Rob & Jan Bullock
Bill Burckhard & Suzanne Parsons
Michael & Pam Busha
Narda Butner
Paul Buttrose
Wayne Calabrese
John Calabro
Anne Cameron
Linda & Dan Canavan
Atom, Kevin, Robyn & Herb Cantor
Larry Cantrell
Elizabeth Cappello
Mark Carbone
Dr. Michael Carelli
Joseph Carfagna
David Carlson
Arthur Carpentier
Alan Cassanelli
Ruth Castellon
Denise Cerniglia
Paula Chabrowe
Judith Chamberlin
Gary Chandler
Kym & Jerry Cherubini
Paul Chinery
James & Judy Chisholm
Diane Cibuls
Julia Clark
Robin Clark
John & Mary Clifford
Robert Cocchiola
Lurena Cohen
John Coleman
Paul Collins
Thomas Condon
James & Mary Connell
John & Susan Connelly
Michelle Constantin & Ed Bee
Barbara Cooney-Tracey
George Cooper
Melissa & Rob Corbett
George Cottiero
Frank Coyne
Ed & Sheila Crapo
Stephanie Critchfield
Ted Crocker

Michael Curry
Sharyon Daigneau
Marie D'Angelo
Ronda D'Antonio
Marc Davidson
Melissa Davis
Stan & Nancy Davis
Larry Degenfelder
Joanne De Haan
Ann DeLisa
Frank DeLustro
Patricia DeMoustes
Nancy DeNicola
Dr. & Mrs. Keith de Windt
Major Jim Diamond
Frank DiGiacomo
John & Loretta Dixon
Sharon & Larry Dolinsky
Maryanne Domato
Lynn & Doug Donaldson
Diane & Dan Dooley
Maggie Dowd
Joseph Dowds
Donald & Diana Doyle
Richard & GG Dube
Edward & Elizabeth Duffy
Richard & Allison Duffy
Mark, Suzanne & Shannon Duggan
Leslie & Ed Dulbs
Michael Duncan
Pamela Duncan
Gerald Dunworth
Debra Duvall
William Dwyer
Bill & Cindy Eaton
Melanie Edwards
Jimmy Egan
Kevin & Lucinda Egler
Linda Eibe
Dale Eisenshtat
Anne Elliot
Marilyn & Steve Engel
Marlene Enot
Evamaria Eskin & Robert Hess Jr.
Alan Ewing
Jennie & Geoffrey Falbey
Mindi Fetterman
Erik Fiebert
Barbara Field
Sinikka Firley
Mark & Bridget Fischer
Rip & Noreen Fisher
Bill & Mel Flanigan
Cathy Flanigan
Betty & Herb Floris
Brian & Phyllis Foley
John Foran

Michelle & David Foster
Kathleen Fougrousse
Douglas Fox
Lanning & Jane Fox
Robert Franco
Ernest Fratalia
Joseph & Maureen Frazzitta
Peter Frederickson
William Frohman
W. Lee & Elizabeth Gaines
David & Debbie Gallin
Barbara Garber
Ed & Linda Gardner
William Gates
Jeff & Gonda Gebhardt
Skip & Edie Gengras
Lucie Georgi
Michael & Laurie Getlan
Gregory Giambalvo
John Gianfrancesco
Bruce & Kathy Giannott
Eileen Gigantino
Patricia Gillen
Kathleen Ginestra
Joseph Giuffre
Tim & Blair Givens
Charles Glover
John Goebel
Stuart Goldenberg
George Goldman
Porfirio & Mary Ann Gomez
Douglas Gordon
Patricia Gorman
Henry & Rachelle (Rocky) Grady
Timothy & Susan Grajewski
Kathy Grant
Mary Graves
Laurence & Deborah Grayhills
Joe Graziano
David Greaves
Richard Green
Martin Greenberg
James & Sharon Griffin
Ken & Sheri Griffin
Stan & Ellen Gross
Charles Grunbaum
Scott Gumienny
Gloria Guzman
Christopher Haddad
Angela Hahn
Tara Haigler
Stephen Hall
William Hanson & Julia Clark
Paul Hardin
Gerald Harkins
Linda Harlan
Susan Harmeling

Stewart Hatch
Gaye & Brad Hatfield
Warren & Brenda Hayford
Richard Heckler
Glenn Hedden
Meryl Heller
Mark Herman
Alex & Charlene Hernandez
Kevin Herndon
Lyle Hilton
Susan Hirsch
Marcia Hocker
John Hoffman
Jennifer Hogan
April & Bob Holcomb
Madelyn & Tom Holder
James Hollinger
Daria Horn
Blythe Houghland
April & Rodney Howard
Karen Howarth & Philip Rosenberg
Peyton Hudson
Ronald Ingles & Barbara McCalister
Horace Irvine
Donald Jackson
Mike & Sandy Jackson
Rima & Frank Jacobellis
Debra James
Kelli Jameson
Ronald Jarvi
Noah Joffe
Cedric Johnson
Nancy Johnson
Rich & Pat Johnston
Ian & Sherry Kamen
Mike Kamradt
Mr. & Mrs. Thomas Kane
Harvey & Lena Kasliner
John Kermashek
Tim Kinane
Tim Kinlead
Al & Mary Kinzer
Wayne Klick
Robert & Eileen Kloppenborg
Julie & Paul Kozikis
Jeffrey Krauskopf
Buddy Kresge
Karl & Donna Krueger
Taryn Kryzda
Jeff & Ellie Lafer
Matthew LaFrance
Helen & Robert Laidman
Michael Laing
Judy & Ed LaPerre
Melody LaPierre
Mary Lawton & Louis Augone Jr.
Jeff & Jackie Lazarus

Robert Leach
Mr. & Mrs. Brian Lee
Jeff Leibowitz
Robert & Phyllis Levin
Ellen & Hank Libby
Douglas Lindheimer
Scott & Karen Linick
Donna Linton
Heather & Jeffery Long Jr.
Mark Long
John LoPorto
Josie Lorusso
Thomas Lowell
Michael & Darlene Lucas
Roger & Barbara Lyon
Howard Lyons
Stephen MacDougall
Denise Magee
Ben Magrill
William J. Mahoney
Richard Makowski
Mr. & Mrs. Steve Mamangakis
Peter Marceau
William Marinelli
Mark Markowitz
Elinor Mastroff
Tony Mastrogiovanni
Mark Matthews
Raymond McCall
Irene & Michael McCambridge
Jane McCaully
Carol & Jack McDonough
Dan McDougal
Larry & Ann McGrath
Denise McKenzie
Kathleen McManus
Kris McNeal
Paul McNulty
Kevin McVeigh
Madeline Mellinger
Julia Melville
Susan Menson
Robert Messier, Jr.
Mr. & Mrs. Edward Metzler
Paul & Pat Mielke
Jeffrey Millar
Helen & William Miller
David Moellering
Regina Mogle
Craig & Susan Monaghan
Matthew Montero
Leo & Diane Montuoro
Mary Morett

Kathy Mullen
Terry & Patricia Murphy
Tom & Sue Mutchler
Angela Nardolillo
Ron & Karen Nathan
Stephen & Kathleen Naughton
Norman Naval
Joseph & Mary Ann Nazare
Linda Nelsen
Evelyn Nelson
Robert Nelson
Dr. & Mrs. Domingo Ngo
Mel Nobel & Jeanine Webster
Daivd Nord
Janice Norman
David & Susan Noyes
Jeff & Debbie Oakley
Marianne & Hugh O'Boyle
Paul & Susan O'Brien
H. Scott O'Buck
Leona O'Connor
Rich & Holly O'Hara
Diane Ontko
Nancy Oosting
Grant & Cindy Osborne
Scott Osias
Tony & Rose Oteri
Vickie & Morris Owen
Walter Paczkowski
Jill Paton
Faith Paul
Kathleen Pello
Larry Perkins
Frank Perry
Mike Petrigan
Deb Pfrogner
Forrester & Kathy Pierce
Marie & Doug Pierce
Lisa & John Pinkley
Terry Pinnix
Kelli Popovic
Kurt Porceng
Robert Posten
Doug & Kathleen Powell
Tara Powers
Sonia Princinsky
Quarforth Family
Bob Racich
David & Mary Radabaugh
Bea Radliff
Susan Ramsthaler
Robert Rasmussen
David Raye

John Reilly
Bob & Joni Reinhart
Thomas Rentoul
Trish & Jay Repass
Pattie & Charlie Restaino
Barbara Reuschle
Joette Lorion Rice
Ray & Sue Riddell
Sue & David Rivard
Jo Ro
Vicki Robb
Kathleen Rogers
Thomas Ronan
Marilyn & John Roselli
Elizabeth Rosenberg
Wesley & Ina Rosenthal
Robert Rotundo
Jeff Samaras
Robert Sanford
Judith & Jorge Santiago
Susan Santin
Vinnie Scaffa
Harry Schalk
Norman Scheffner
Marcella Schell
Hank & Julie Schellenger
Susan & Terry Schmidt
Bob & Bev Schneider
Dr. Steven & Lisa Schnell
Nicki & David Schoonover
Cynthia Schroll
Robert & Vickie Schultz
Russell & Karen Schutte
Owen & Linda Schwaderer
Ronald Scirrotto
Preethi Sekharan
Evelyn & Bernard Sensale
Loretta Sfiridis
Robert Shapiro
William Shepherd
Robert Simler
Scott Slavens
Glenn Smith
Martha Smith
Peter & Kathy Smith
Spike & Debbie Smith
George & Patti Sousa
Raymond & Rhonda Spedding
Jack & Linda Spyker-Oles
Sheila Stahl
Michael Stein
Gerry & Cyndie Stephenson

Paul Strauss
Mark Stull
Scott Sussman
Catherine Szymczak
Ken & Daina Takacs
Frank Tamanini
Don Thomas
Spencer & Susan Toomey
Terry Traeger
Alica Treder
Dr. Jerry & Lori True
Glenn Tuckman
Nancy Turrell
Randy Tyo
Steve & Lynn Tyre
Hugo & Patricia Unruh
Linda Van Dam
Gary Vanderwood
Vandling Family
Helen & Wayne Van Dusen
Tom & Rita Veale
George Vischak
Marleen Volkert
Charles Voss
Stanley Waite
Ray & Sandy Walker
Greg Warner
Sally & Steve Wasserman
Stacie Wertheim
Johan & Susan Wesslen
Tom & Sue Whittington
Kurt & Karen Wieditz
Stanley & Laura Wiegand
Jim & Jan Wilds
Craig Willert & Cynthia Gustafson
David Willey
Jim & Maureen Williams
Richard Williams
Sharon Wilson
Greg Windsor
Jacqueline Winslow
Laura Wright
Teresa Wright
Nancy Wyant
Wynne Charitable Foundation
Larry & Jan Wzorek
Eva & Jery Yakuben
Bob & Rose Zigenfus
Gary Zingo & Mary Nash
Denise Ziolo
Ed & Ann Zorn

We couldn't do it without you.

CONTRIBUTORS
2025-26

Enjoy the Perks of Membership

As a thanks for your membership, you will receive a Patron Privilege Card.* Use it to thank these merchants who support The Lyric Theatre.

April Daze

308 S Colorado Avenue
10% Off Any Purchase Over \$50

Argento Jewelry

27 SW Osceola Street
10% Off Any Purchase

B Boutique

2651 SE Ocean Boulevard
10% Off Any Purchase

The Black Marlin

53 SW Osceola Street
Free glass of House Wine or
Domestic Draft with Entrée

Calico Trading Company

47 SW Osceola Street, Suite 104
10% Off Any Purchase
of \$50 or more

Cinco de Mayo Mexican Cuisine

1840 NE Jensen Beach Boulevard
15% Off Dinner

Coast Beauty Bar

30 SE Ocean Boulevard
Free Shine or Deep Conditioning
Treatment with Any Service.

Coconut Bay Gifts & Beach Décor

13 SE Osceola Street
15% Off All Yankee Candle

Coventry Café

211 S Colorado Avenue
Complimentary Glass of Wine or
Local Craft Beer (coupon)

Diana Mae's Sandal Shack

47 SW Osceola Street
10% Off Any Regularly Priced
Purchase Excluding Surf Boards

The Dirty Hippie

43 SW Osceola Street
10% Off Any Purchase Over
\$100 of Regularly Priced Items

Duffy's Sports Grill

1 SW Osceola Street
\$10 Off Any \$50 Purchase
(coupon)

The Googan Coffee Shop

55 SW Flagler Avenue
10% Off Any Order

Harbor Wear

307 S Colorado Avenue
10% Off Any Regularly Priced Item

Island Cotton Company

53 SW Flagler Avenue
10% Off Any Purchase

Kilwins Chocolates, Fudge & Ice Cream

31 SW Osceola Street
Free Slice of Fudge (coupon)

Luna Italian Cuisine

49 SW Flagler Avenue
10% Off Any Purchase

Riverwalk Café & Oyster Bar

201 SW St. Lucie Avenue
1 Free House Wine or Domestic
Draft with purchase of Entree
(coupon)

Smokin' Premiums

51 SW Osceola Street
Free gift with purchase
of \$10 or more

Solare Sunglasses

4 SW Osceola Street
10% Off Any purchase

BECOME
A MEMBER!

theLYRIC

GET A
COOL
CARD!



ENJOY
THE PERKS!



For more information, contact Heather Long,
Development Director at 772-220-1942 ext. 209
or development@lyrictheatre.com

*Family membership level and above

Celebrating
40 Years
of Excellence

1986 - 2026

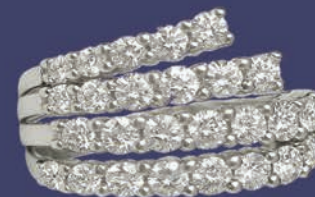
JUST GOLD JEWELERS

Just Gold Jewelers is a family owned and operated fine jewelry store known for our high-quality traditional and contemporary pieces. Explore our exquisite collection in 14 and 18 karat gold, platinum, and silver, along with rare and unique estate treasures.

We proudly offer custom designs, expert jewelry and watch repair, appraisals, and consignment services all year round.

Family owned. Expertly crafted.

Always unforgettable.



Cedar Pointe Plaza
2691 S.E. Ocean Blvd., Stuart, FL
772.283.6717
www.justgoldjewelers.com

AMERICAN GEM
SOCIETY®

DRUMS ~ PERCUSSION ~ INSTRUCTION

DrummersOnly Drum Shop

South Florida's Only Music Store between
Miami and Orlando devoted to Drums
and Percussion Instruments



We Buy, Sell,
Rent and
Repair All
Drum and
Percussion
Equipment.
All Major
Brands

- Drum Lessons
- Drum and Percussion Ensembles
- Piano Lessons
- Mallet Keyboards
- New, Pre-Owned and Vintage Drum & Percussion equipment

1532 SE Village Green Dr.
Port Saint Lucie
772.337.4002
www.drummersonly.com

PDI
Patty Downing
INTERIORS



Timeless Design for Beautiful Living

Find us on:
@pattydowninginteriors
Patty Downing Interiors

3770 SE Ocean Blvd,
Stuart, FL 34996
(772) 288-2122

2025-26
Lyric Volunteers

Bartenders

20+ YEARS OF SERVICE
Maribeth Konz

15+ YEARS OF SERVICE
Kathy Grant
Kevin Grant
Leslie Cuatt

10+ YEARS OF SERVICE
Reva Zemke
Bob Cameron

5+ YEARS OF SERVICE
Penny Gehring

UNDER 5 YEARS
Kelly Cuatt

Ushers

25+ YEARS OF SERVICE
Lois Heimbach
Gayle Kochan

20+ YEARS OF SERVICE
Kathy Koivula

15+ YEARS OF SERVICE
Joan Clark
Renee Hill
Marcy Roeder

10+ YEARS OF SERVICE
Ranelle Furniss
Karin Stocker

5+ YEARS OF SERVICE
Sharon Ardito
Jeff Brown
Janet Church
Bobbi Demers
Christine Ernst
Kathy Finn
Eileen Francis
Dan Goller
Lou Gregory
Nancy Johnson
Lois Olivari
Jean Spalt

UNDER 5 YEARS
Kreg Ackmann
Jean Bamonte
Debbie Banta
Kathleen Barbieri
Andy Barniak

Charlene Bartlett
Ginny Beagan
Cynthia Beddow
Wendy Berringer
Ron Blake
Joseph (Jodi) Bubla
Lael Burns
Craig Byrd
Christine Campora
Ginger Carslake
Lynn Castro
Mary Caudill
Mark Choate
Mary Ciccone (Lupton)
Nancy Citarella
Tom Clements
Lucy Corley
Michael Cushard
Paula Cushard
Carol Davis
Patti Descutner
Carol Dion
Donna Dobrich
Bo (Robert) Douglas
Karen Dram
Kevin Egler
Lucinda Egler
Phyllis Elkins
DJ Erickson

Patricia Erickson
Barbara Fields
Ken Fields
Larry Franklin
Ed Gardner
Linda Gardner
Eileen Gigantino
Donna Goethel
Doug Goethel
Bruce, Dr. Gopman
Larry Grayhills
Frank Griffiths
Leigh Hayden
Carolyn Herbert
Anne Herrington
Dolores Kennedy
Mark Kochis
Adam Krimmer
Ann Krimmer
Phyllis Leclercq
Maureen (Mo) Leety
Ralph Lombardo
Alice Long
Donna Lupinacci
Mary Anne Mahoney
Susan Marcello
LeslieAnne Markowitz
Martin Markowitz
Bob Maxwell

Stacey Maxwell
Christine Miranda
Bob Mocher
Guy Napoli
Sue Napoli
Bruce Neumann
Brenda Nolin
Tom Nolin
Frank O'Brien
Jackie O'Connor
Laura Peel
Laurie Pisciotto
Joseph Schaefer
Kathy Shabotynskyj
Denis Spizuoco
Jonathan Stout
Nancy Stoyko
Judy Talaber
Joy Teed
Rose Trum
Greg Warren
Sonia Warren
David Wasser
Jamie Wasser
Jill Watson
Mikki Wells
Cathy White
Mary Woodward
Donna Zutter

A Standing Ovation for the Volunteers who make every performance shine.

WORLD-CLASS ORTHOPAEDIC CARE

Whenever and Wherever You Need It



We've partnered with HURT! to provide fast, FREE advice from injury experts 24/7 - 365



Learn More

 SOUTH FLORIDA
ORTHOPAEDICS
& SPORTS MEDICINE

FeelBetterFasterOrtho.com

Office Locations

Mon - Fri 8 am - 5 pm, No referral needed | (772) 288-2400
Stuart: 1050 SE Monterey Road, Stuart, FL
Tradition: 9401 SW Discovery Way, Port St Lucie, FL
East Port St. Lucie: 1881 SE Tiffany Ave, Suite 202, Port St. Lucie, FL

Ortho Injury Walk-in Clinics

Tradition: 9401 SW Discovery Way, Suite 101, Port St Lucie, FL
Mon-Fri, 8 am - 6 pm & Sat 8 am - 2 pm | (772) 261-OUCH (6824)
Hobe Sound: 9955 SE Federal Hwy, Suite B, Hobe Sound, FL 33455
Mon-Fri, 8 am - 5 pm | (772) 261-OUCH (6824)



VISIT DOWNTOWN STUART'S
FARMER'S MARKET!

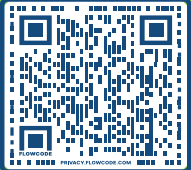
9-1PM APRIL - SEPTEMBER
9-2PM OCTOBER - MARCH

FLAGLER PARK - 221 SW FLAGLER AVE

Mobile Bar • Live Music
Fresh Local Produce
Artisanal Cheeses & Breads
Local Meats & Seafood
Sauces, Spices, Dips & Treats
Specialty Beverages
Unique Handcrafted Goods
Kids Market - 3rd Sunday of every Month



EVERY SUNDAY
ALL YEAR ROUND
SCAN CODE FOR MORE INFO



Highwaymen paintings are available!



41 SW Flagler Ave. • Downtown Stuart
772.287.7744 • RareEarthGallery.com
Teresa Klein ARTIST/OWNER



MARTIN FENCE CO.
SINCE 1979

"For All Your Fencing Needs"
877-777-3212
www.martinfence.com

Need a
Great
Gift?



Contact The Lyric Box Office
772-286-7827

SEATING & GENERAL INFORMATION

		STAGE																																		
Wall / No Aisle		7	5	3	1	AA	111	110	109	108	107	106	105	104	103	102	101	AA	2	4	6	8														
		9	7	5	3	1	BB	111	110	109	108	107	106	105	104	103	102	101	BB	2	4	6	8	10												
		9	7	5	3	1	CC	111	110	109	108	107	106	105	104	103	102	101	CC	2	4	6	8	10												
		11	9	7	5	3	1	DD	111	110	109	108	107	106	105	104	103	102	101	DD	2	4	6	8	10	12										
	13	11	9	7	5	3	1	EE	111	110	109	108	107	106	105	104	103	102	101	EE	2	4	6	8	10	12	14									
	13	11	9	7	5	3	1	FF	111	110	109	108	107	106	105	104	103	102	101	FF	2	4	6	8	10	12	14									
	13	11	9	7	5	3	1	GG	111	110	109	108	107	106	105	104	103	102	101	GG	2	4	6	8	10	12	14									
	13	11	9	7	5	3	1	HH	111	110	109	108	107	106	105	104	103	102	101	HH	2	4	6	8	10	12	14									
	13	11	9	7	5	3	1	JJ	111	110	109	108	107	106	105	104	103	102	101	JJ	2	4	6	8	10	12	14									
	13	11	9	7	5	3	1	KK	111	110	109	108	107	106	105	104	103	102	101	KK	2	4	6	8	10	12	14									
	13	11	9	7	5	3	1	LL				108	107	106	105	104	103	102	101	LL	2	4	6	8	10	12	14									
	13	11	9	7	5	3	1	MM												MM	2	4	6	8	10	12	14									
Wall / No Aisle		13	11	9	7	5	3	1	A	112	111	110	109	108	107	106	105	104	103	102	101	A	2	4	6	8	10	12	14							
		15	13	11	9	7	5	3	1	B	112	111	110	109	108	107	106	105	104	103	102	101	B	2	4	6	8	10	12	14	16					
	19	17	15	13	11	9	7	5	3	1	C	112	111	110	109	108	107	106	105	104	103	102	101	C	2	4	6	8	10	12	14	16	18	20		
	19	17	15	13	11	9	7	5	3	1	D	112	111	110	109	108	107	106	105	104	103	102	101	D	2	4	6	8	10	12	14	16	18	20		
										E	112	111	110	109	108	107	106	105	104	103	102	101	E	2	4											
										F	112	111	110	109	108	107	106	105	104	103	102	101	F	2	4											
										19	17	15	13	11	9	7	5	3	1		114	113	112	111	110	109	108	107	106	105	104	103	102	101	G	ELEVATOR
										19	17	15	13	11	9	7	5	3	1		114	113	112	111	110	109	108	107	106	105	104	103	102	101	H	
										126	125	124	123	122	121	120	119	118	117	116	115	114	113	112	111	110	109	108	107	106	105	104	103	102	101	

Upper Balcony

Lower Balcony

Orchestra

Wheelchair Accessible

Patrons with disabilities:
Special seating arrangements
can be made with the Box
Office at the time you purchase
tickets, based on availability.

Hours
Winter & Spring Box Office hours are Monday-Saturday from 10:00 a.m. to 4:00 p.m. We are also open two (2) hours prior to the showtime on the day of a performance.

Purchasing Flexibility
For your convenience, you can purchase tickets in several different ways:
· Online at lyrictheatre.com
· By phone at 772-286-7827
· In person at the Box Office
59 SW Flagler Avenue, Historic Downtown Stuart

Will Call
Prepaid tickets are available beginning two hours prior to each performance at the Box Office in the lobby.

Paid tickets can also be picked up in advance at any time the Box Office is open, or they can be mailed to you upon your request if there is ample time to do so prior to the performance date.

Gift Certificates
Gift certificates can be purchased in any denomination and are good for any performance held at The Lyric Theatre. They are valid for one year from the date of the purchase. Gift certificates are not transferable, and can only be redeemed by the person(s) for whom they are purchased. They are non-refundable and cannot be redeemed for cash.

Photography/Recording
The use of any audio or visual recording device is strictly prohibited. Patrons will be asked to leave the Theater.

Cell Phones/Electronic Devices
Please turn off or put personal communication devices on silent mode prior to entering the Theater.

Patrons with Disabilities
Special seating arrangements must be made with the Box Office at the time you purchase tickets, based on availability. Lobby restrooms are accessible.

Assistive Listening Devices
Assistive listening devices are available in the Box Office.

Latecomers
Performances begin at the advertised time. Please allow proper time for parking and collection of tickets. Latecomers will be seated at the discretion of management.

Parking Vouchers
Vouchers are provided to our Patrons attending matinee performances.

Emergency Exits
The exits indicated by a green lighted sign nearest to the seat you occupy is the shortest route to the street. In the event of a fire or other emergency please exit immediately. Please follow the directions of the House Staff.

First Aid
Please see the House Manager.

Emergency
If you become aware of a medical or other emergency, please inform the House Staff immediately. AED is located in the lobby.

Smoking/Vaping
Is prohibited anywhere inside the Theater.

Beverage Service
A full service cash bar is available in the lobby.

Restrooms
Located to the left and right of the Theater lobby entrance.

Lost and Found
Contact the Box Office at 772-286-7827.

Group Sales
Discounts are available for groups of 10 or more. Please contact Sue Nauss, Box Office Director at 772-220-1942 x203 for more details.

Customer Service
If you have a suggestion or problem, please contact Kia Fontaine, President/CEO, Kia@lyrictheatre.com or 772-220-1942 x207.

Theater Etiquette
As a courtesy to the performers and other audience members, please do not leave your seat until the end of the act. If for some reason you must leave, please wait for a pause in the program.

Volunteer Opportunities
If you would like information about volunteer opportunities, please contact our Volunteer Manager, Terri O'Connell at 203-470-3127 or volunteer@lyrictheatre.com.

No Weapons or Firearms
are permitted on premises.

A MAJOR MUSICAL TOUR

THE BEST OF BROADWAY

The Music of Andrew Lloyd Webber and more...

April 24
7:00 pm

Internationally acclaimed performing artists, Terry Barber and Shelley Keelor breathe new life into show-stopping hit songs from JC Superstar, Cats, Evita, Phantom... plus Chicago, Hamilton, Les Miserables, and more!

Tickets: 772.286.7827 LyricTheatre.com

walks, check-ins, feedings, overnights, transport

BONDED # 999195292 • INSURED

Jenny and the Pets

Pet Sitting, Walking and Loving

(201) 259-8082 • jenny@jennyandthepets.dog
www.jennyandthepets.dog

FLUENT in: bark, meow, moo, neigh, baahhh, purr, squeak, snort, buzz, cluck, cha-caw, chirp, bleat, hee-haw, quack, ribbit, maa, honk, gobble, squeal, hiss, chatter, squawk, oink, coo...

Panthera Publishing

Contact us today!

If You've Spoken It, Taught It, Lived It - We'll Publish It!!

Expand your message beyond the moment

We use YOUR voice to create powerful books that speak long after you do

- Audio-Video Transcription
- Printing & Publishing
- Editing & Formatting
- Custom Cover Design

PantheraPublishing.com

(772) 497-6001 Info@PantheraPublishing.com

THE LYRIC LEGACY SOCIETY



Several very special patrons have chosen to include The Lyric in their planned giving by directing a portion of their assets to The Lyric. In their honor we created The Lyric Legacy Society to acknowledge their passion and love for The Lyric.

Bob & Ralf Massey
 Davies & Gayle Tainter
 Paul A. Shirley Family
 Ed & Denise Belizar
 Randy & Linda Prange
 Nancy & Joe Wertheim
 Sherry Dunn
 Clayton & Ann Timmons
 Charles & Janet Seidler
 Frank M. Byers, Jr
 Mr. & Mrs. Howard Cook
 Jean Friend
 Mary Laub Cowan
 Greg & Sharon Lewis Family Trust
 Tom & Linda Schaefer
 Bill & Betty Werner
 Mike Hill

Join fellow theatre lovers by becoming a Member to express your love and continuing support for The Lyric.

Contact Heather Long, Development Director at 772.220.1942 extension 209 or at development@lyrictheatre.com.

THE BARN THEATRE

SEASON 55

2025 - 2026

NOVEMBER 2025

CABARET

DECEMBER 2025

tick, tick... BOOM!

FEBRUARY 2026

A Tribute to Lionel Richie & The Commodores

APRIL 2026

A Tribute to Jimmy Buffet

JANUARY 2026

ROCK OF AGES

MARCH 2026

hairspray THE BROADWAY MUSICAL

MAY 2026

INTO THE WOODS

BARN-THEATRE.COM | 772-287-4884

35th Annual
All Florida Juried Art Show
 Featuring All Florida Artists in All Media
 January 9 - February 28, 2026
 Opening & Awards Reception
 Friday, January 9 | 5:30PM - 7PM

Sunset Concerts
 at the Gallery

THE SECOND TUESDAY
 OF EVERY MONTH
 AT 5:30PM

Scan to reserve your seat!

EVERGLOW

The Florida Artists Group - Everglow

Exhibit Dates:
 March 10 - April 18, 2026

Opening Reception:
 Friday, March 13 | 5:30-7PM

MARTIN Arts

80 SE Ocean Blvd, Stuart, FL 34994
 (772) 287-6676
 CHCC Gallery Hours: Tuesday, 10AM - 6PM
 Wednesday - Saturday 10AM - 4PM

Visit our website to learn more about upcoming exhibits in the Court House Cultural Center:

MartinArts.org

Facebook Instagram YouTube @martinartsfl

ENJOY THE PERKS

Skip the Line with The Fast Pass to Great Seats and More!

Members Enjoy the Benefits of:

- Advance notice of upcoming events • Purchasing tickets in advance of public
- Discounts at local restaurants and businesses (Patron Level and Up)
- A drink on us (Bronze Level and Up)

Your tax-deductible donation will help to keep ticket prices at affordable rates, expand cultural and Arts & Education Programming, and preserve our beautiful historic landmark.

Become a Member Today!

Contact Heather Long, Development Director at 772.220.1942 extension 209 or at development@lyrictheatre.com.

Arts AND EDUCATION AT theLYRIC



Continuing to provide Treasure Coast families with the wonderfully unique and magical experience of live performing arts.

DISCOVERY SERIES FOR YOUNG AUDIENCES

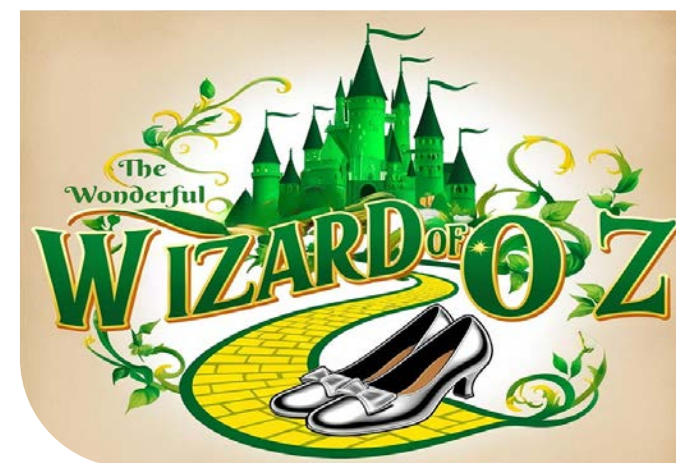
This mainstay of The Lyric's educational outreach has provided quality programming to Treasure Coast schools for over 20 years. This series of school-time shows selected with you the educator in mind, focuses on academic subjects such as: literature, science, history, ecology conservation, anti-bullying and wellness.



Eco Challenge: Environmental Game Show

Join in the fun as we laugh and learn about how to protect our planet with the Eco-Challenge! Eco-Challenge is designed to get children and adults engaged and informed on the important issues of Environmental Conservation. Kids and adults alike will have a blast participating in this all-new, totally interactive Environmental Game Show with an important message - if we all do a little, we can do a lot! All ages.

Thursday, April 2nd, 2026
10:15am & 11:45am



The Wonderful Wizard of Oz

Join Dorothy, a courageous girl swept away to the magical Land of Oz, as she embarks on an unforgettable journey to find her way back home. Along the way, she befriends the Scarecrow, Tin Man, and Cowardly Lion, all in search of their own dreams, while facing off against the Wicked Witch of the West. Don't miss this magical adventure, where anything is possible over the rainbow! All ages.

Thursday, May 7th, 2026
10:15am & 11:45am

For more information about the Discovery Series for Young Audiences, please contact Sue Nauss, Arts & Education Coordinator at 772-220-1942 ext. 203 or Sue@LyricTheatre.com

HISTORIC DOWNTOWN STUART

Explore America's Happiest Seaside Town

Historic Downtown Stuart is home to over 60 locally owned shops, cafés, restaurants, boutiques, and The Lyric Theatre.

Three times as much money stays in your community when you shop local, independently owned businesses.

2026 ANNUAL EVENTS

MARKET ON MAIN Every Sun Oct - Mar: 9am-2pm • Apr - Sept: 9am-1pm Flagler Park 221 SW Flagler Ave 772-285-0502	ROCK'N RIVERWALK Every Sun • 1pm-4pm Riverwalk Stage • St. Lucie Ave. www.rocknriverwalk.com	MORNINGS ON MAIN ST. 4th Thurs in Jan/Mar/May/Jul/Sept & 3rd Thurs in Nov 8am-9am • Various Locations 772-286-2848
---	--	--

2026 UPCOMING EVENTS

FEBRUARY 36TH ANNUAL DOWNTOWN STUART ART FESTIVAL Saturday & Sunday February 21st & 22nd 10am-5pm • Osceola St.	MARCH 29TH ANNUAL DOWNTOWN STUART SPRING CRAFT FESTIVAL Saturday & Sunday March 21st & 22nd 10am-5pm • Osceola St.	APRIL SPRING SIDEWALK SALE Saturday & Sunday April 10th & 11th 10am-5pm Various Downtown Stuart Businesses	MAY SPRING STUART STROLL Thursday, May 7th 4:30pm-8:30pm Various Downtown Stuart Businesses
---	--	---	---

These events are presented with the help of our sponsors and the Stuart Main Street Promotion Committee; a joint effort of Stuart Main Street, a 501c3 nonprofit and the Downtown Business Association of Stuart.

downtownstuartflorida.com | stuartmainstreet.org

Arts AND EDUCATION AT theLYRIC



Continuing to provide Treasure Coast families with the wonderfully unique and magical experience of live performing arts.

FREE TICKETS for Non-Profit Youth Organizations!

The Lyric Theatre is committed to strengthening our commitment to educate and inspire our leaders of tomorrow by providing access to all Lyric Theatre performances through our Arts & Education Program *KidTix*.



KidTix provides the community FREE tickets to non-profit organizations that serve low-income and/or at-risk youth. Providing access to arts and culture is essential to strengthening the power of change, making our community a better place to live, work and play.

KidTix are available on a first-come, first-serve basis.

OPEN AUDITIONS

YOUTH Arts 2026 CELEBRATION



**Auditions for 1st – 12th grade student performers on
Wednesday, Jan 21, 2026 3-7pm and
Sunday, Jan 25, 2026 1-4pm
by appointment at The Lyric Theatre.**

For more information visit
lyrictheatre.com/youth-arts-celebration.
To schedule your audition appointment or to become a sponsor, contact Sue Nauss
at 772-220-1942 ext. 203 or
Sue@LyricTheatre.com.

**The Youth Arts Celebration will be held
at The Lyric Theatre on Sunday,
March 22, 2026 at 6:00pm**

IT'S SHOWTIME!



YOUTH Arts 2026 CELEBRATION

**Prepare to be amazed by Treasure Coast student performers
in the 9th annual Youth Arts Celebration!**

Young entertainers, grades 12 and under, will take to The Lyric stage

Sunday, March 22, 2026 • 6:00pm

Ticket sales and sponsorships raise funds for The Lyric's Arts & Education Programs.
To become a sponsor contact Sue Nauss at 772-220-1942, ext. 203 or Sue@LyricTheatre.com

For more information about KidTix and The Youth Arts Celebration, please contact Sue Nauss, Arts & Education Coordinator at 772-220-1942 ext. 203 or Sue@LyricTheatre.com



Continuing
to provide
Treasure Coast
families with
the wonderfully
unique and
magical
experience of
live performing
arts.

FAMILY FUN SERIES



JAN 13



JAN 31



MAR 2

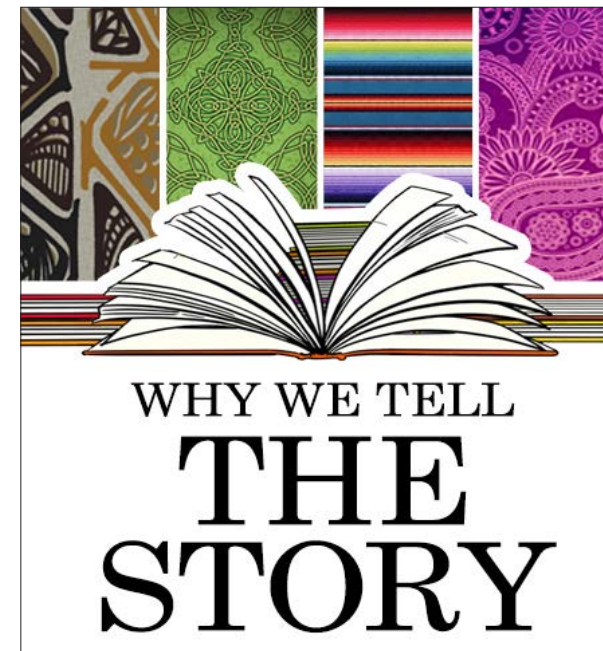


APR 3

Ladies and gentlemen, boys and girls, children of all ages, step right up to The Lyric's Family FUN Series! Get ready to experience the magic of live performances, igniting a passion for art and culture that will last a lifetime! Proudly sponsored by The Bauman Family Foundation

THE LYRIC'S **AWE**, THAT'S **SOME!** SUMMER CAMP

We are more than just your ordinary theatre camp... Join us for three AWESOME weeks as we learn new skills in drama, dance, music, and technical theatre with campers of all backgrounds and interests. These new skills help us spread our message with audiences on the historic Lyric Theatre stage, and our message is this: Character is important, both onstage and off.



Session 1: June 8-26
Why We Tell the Story
Honoring our past for the future

This theme looks to the past to point the way for our future. We must first know where we came from to know where we are going. The campers will take the audience on a trip through different eras and decades using songs, dance, and scenes.



Session 2: July 6-24
Unplugged
Disconnecting to Connect

In this technological age, it is easy to lose touch. We need to make more time for talking and listening without electronic interruptions. Campers will experience the joy of what it means to disconnect and reconnect to one another.

Ages: 1st to 8th Grade **Hours:** 9am - 4pm **Location:** Flagler Place, 201 SW Flagler Ave, Stuart

Because the arts make life better for all of us.

We applaud the artists who enlighten us, brighten our spaces, spark our imagination, and enhance our communities.

We are proud to play our part.

Together with our Fundholders and partners, The Community Foundation Martin-St. Lucie has invested \$2.2 million in arts, culture and preservation here at home, in the last decade alone.

We invite you to join us.

To learn how you can support the arts in Martin and St. Lucie counties and beyond, contact us today.



Inspiring Philanthropy
**THE COMMUNITY
FOUNDATION**

MARTIN
ST. LUCIE

851 SE Monterey Commons Boulevard | Stuart, FL 34996
772.288.3795 | www.tcfmsl.org



For more information, contact
Elizabeth Barbella, President & CEO,
at Elizabeth@tcfmsl.org



Support the Arts

Become a Member • Donate • Director's Circle • Arts & Education Programs • Advertise in the Lyric Magazine
Patron Perks • Gift Certificate • Volunteer • Lyric Legacy Society • Show Sponsorship • Corporate Partnership

When you support The Lyric Theatre you play a leading role in providing the community with affordable ticket prices, cultural and arts education programming while preserving our historic landmark. Access to Performing Arts strengthens our community socially, economically and educationally.

To show your support or for more information, contact Heather Long, Development Director, at 772-220-1942, ext. 209, via email at Development@LyricTheatre.com or visit www.lyrictheatre.com/support-the-lyric.



Hook, Line and UV protected-
that's how we Fish



ANA CAPRI
RESORT WEAR

41 B SW OSCEOLA AT
STUART FL 34994

Located in the Heart of Downtown Stuart

772-266-4969



Caribbean Blues captured in Natural Larimar

ARGENTO
◇ JEWELRY ◇

27 SW Osceola Street
Stuart, FL 34994

772.223.1647

www.argentojewelrystuart.com



UPSCALE YOUR EXPECTATIONS OFFICES

Water Pointe Realty Group is one of the largest independent real estate firms serving Florida's Palm Beach, Martin and St. Lucie Counties.

We grew up here and so has our business. Let us put our homegrown insight, longstanding relationships, and lifelong love of this beautiful area to work for you. Whether you're looking for your first home, a golf course lifestyle, or a multi-million-dollar waterfront estate, we humbly invite you to expect more from us.

We will deliver.

JUPITER/TEQUESTA: 561.747.3377
393 Tequesta Dr., Tequesta, Florida 33469

SEWALL'S POINT: 772.220.4343
3727 SE Ocean Blvd., Ste 100, Stuart, Florida 34996

HUTCHINSON ISLAND: 772.225.0110
660 NE Ocean Blvd., Stuart, Florida 34996

WILLOUGHBY/STUART: 772.220.7877
960 SE Indian St., Stuart, Florida 34997



THE LUXURY OF LOCAL INSIGHT.
WaterPointe.com

Locally and Family Owned Dining in Your Neighborhood

the Gafford

SOUTHERN | STEAKS | SEAFOOD

**HAPPY
HOURS**

4-6 in the bar
including
food
specials



47 SW Flagler Avenue • Stuart, FL
(772) 221-9517 • www.thegafford.com



S O C I A L

**SOCIAL
HOURS**

3-6 in the bar
including
food
specials



3168 SW Martin Downs Blvd. • Palm City, FL
(772) 254-4247 • www.palmcitysocial.com

Don't feel like getting out? We now offer Door Dash!