

TECHNICAL SPECIFICATIONS



3865 North Wickham Road
Melbourne, Florida 32935

Main Office (321) 433-5719
Ticket Office (321) 242-2219

Rob Adams
Director of Facilities
(321) 433-5822
radams@asmmelbourne.com

Table of Contents

| | |
|------------------------------------|----|
| CONTACT INFORMATION | 3 |
| GENERAL INFORMATION | 4 |
| FACILITY DIMENSIONS | 5 |
| LIGHTING SYSTEM AND EQUIPMENT..... | 7 |
| SOUND SYSTEM AND EQUIPMENT | 8 |
| MONITOR SYSTEM | 9 |
| CURTAIN SCHEDULE | 10 |
| ROAD COMPANY PROVISIONS | 10 |
| FLY SYSTEM | 10 |
| FLY SCHEDULE..... | 11 |
| MAIN STAGE GRID IRON..... | 12 |
| FACILITY MAP | 13 |
| MAIN STAGE MAP..... | 14 |
| FACILITY PARKING MAP | 15 |
| MAIN STAGE SEATING CHART | 16 |
| STUDIO THEATRE VENUE | 17 |
| STUDIO THEATRE MAP | 18 |
| ROTUNDA MAP & DIMENSIONS | 19 |

CONTACT INFORMATION

General Manager

TBA

Rob Adams

Director of Facilities

radams@asmmelbourne.com

(321) 433-5822

James Boukedes

Operations Manager

jboukedes@asmmelbourne.com

(321) 433-5791

Ashley Dillow

Box Office Manager

adillow@asmmelbourne.com

(321) 433-5714

Justin MacCulley

Booking Manager

jmacculley@asmmelbourne.com

(321) 433-5823

Director of Marketing

TBA

Director of Facilities Accounting

TBA

Deanna Kreitzer

Food and Beverage Manager

dkreitzer@asmmelbourne.com

(321) 433-5827

GENERAL INFORMATION

AUDITORIUM CAPACITY: (Continental Seating)

| | |
|------------------|--------------|
| Orchestra Level: | 720 |
| Orchestra Pit: | 122 |
| Grand Tier: | 1,174 |
| TOTAL: | 2,016 |

(Accessible Seating: 74 included in above numbers)

STAGE DIMENSIONS:

Backstage side wall to side wall, 120';
Proscenium to back wall, 50'
Proscenium opening, 27' high by 56'6" wide;
Grid height: 68'
Height of clear space in wings (below gallery), 31'6"
Depth of apron, 2'6" without orchestra pit; 21'6" with raised pit

ORCHESTRA PIT:

19' wide by 48' long, screw jack elevator; Travel distance, 10';
Travel speed, 2.5 FPM (See Facility Dimensions Diagram)

STAGE EQUIPMENT:

SEE ATTACHED FLY SCHEDULE
Complete portable Wenger orchestra shell

LOADING DOCK:

Covered, standard loading dock at rear of stage;
Two (2) semi-truck capacity, 20' x 10' dock door
Ample parking is available for trucks and busses

FACILITY DIMENSIONS

STAGE:

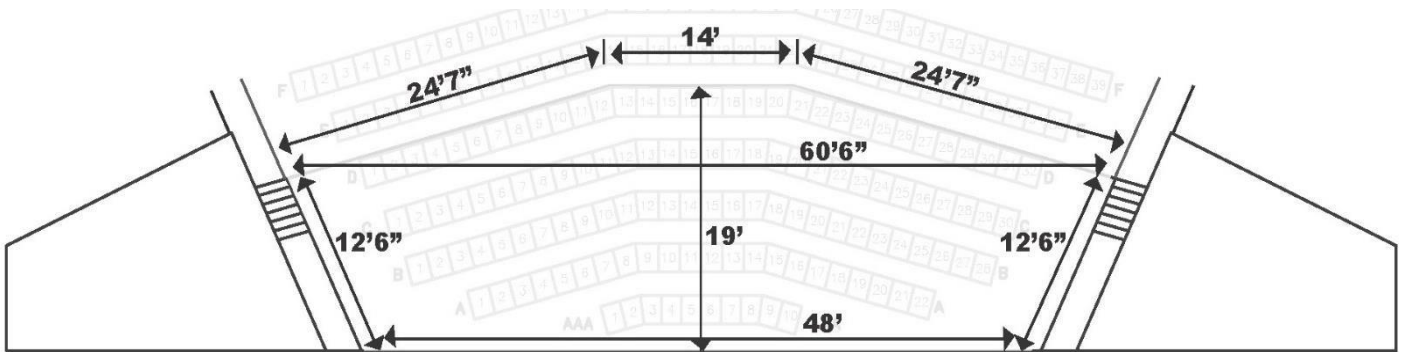
120' wide by 50' deep (6,000 sq. ft.);
68' Deck to bottom of grid.
Proscenium opening: 27' high by 55'6"

LOBBY:

Main floor: 97' by 30' (2,910 sq. ft.);
Mezzanine: 97' by 30' (1,649 sq. ft.);

ORCHESTRA PIT:

56' by 19' (1,064 sq ft)



BLACK BOX THEATRE:

73' by 45' (3,285 sq ft), 18' ceiling

REHEARSAL HALL (PA168):

40' by 40' (1,600 sq ft), 25' ceiling (General use)

REHEARSAL ROOM (PA160):

48' by 38' (1,824 sq ft), 18' ceiling (Choral use)

REHEARSAL ROOM (PA158):

50' by 48' (2,400 sq ft), 18' ceiling (Instrumental use)

SCENE SHOP:

Large scene shop 39' x 45' (1,755sq ft.) with 10' by 10' entrance to stage;
Storage as needed.

GREEN ROOM:

Large green room 24' by 30' (720sqft) to serve performers and crew. Equipped with refrigerator, stage audio and video monitor.

DRESSING ROOM:

6 "star" dressing rooms with lavatory and shower. (hot and cold water)
2 chorus rooms with lavatories and showers (hot and cold water)

WARDROBE ROOM:

Large room (500sqft)
(2) Washers (2) Dryers
Ironing Board, Iron + Steamer
Rolling Wardrobe Racks
Large Sink

LIGHTING SYSTEM AND EQUIPMENT

MAIN THEATRE

DIMMING AND CONTROL:

Control board: Grand MA2 Light

Dimmers: 253 – ETC Sensor CEM3

Circuits: 253 (dimmer per circuit system)

LIGHTING FIXTURES:

26 – Chauvet Par Quad (LED)
10 – Martin Mac Quantum Profile (movers)
6 – Chauvet Maverick MK2 WASH
7 – Chauvet Ovation B-2805 FC (CYC)
30 – S4-10 degree ellipsoidal (FOH)
8 – S4-19 degree ellipsoidal
70 – S4-26 degree ellipsoidal
50 – S4-36 degree ellipsoidal
50 – S4 – Par 64
10 – ACL Bars
2 – 9 light units
2 – 40' double hung lighting with 120 Source 4 Par 64
4 – CM 1-ton capacity chain motors with 75' chain
5 – Strand 3-cell far (CYC) (1K)
4 – Lycian 1.2kw Superstar Follow spots
8 – 10' pipe and base booms

(Lighting plot available by request)

SOUND SYSTEM AND EQUIPMENT

MAIN THEATRE

SPEAKERS:

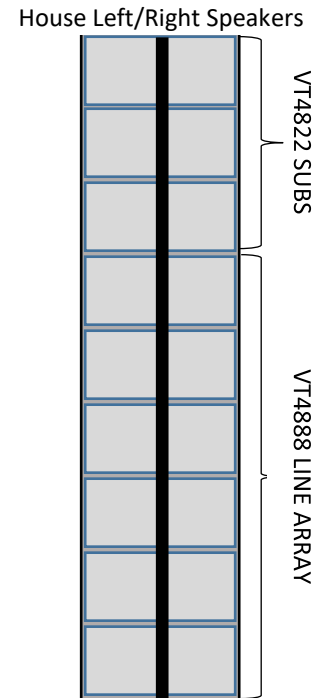
JBL Vertec VT4888 Line Array (FOH)
JBL Vertec VT4882 Subs
JBL PD5322/95 Center Fill (FOH)
JBL SRX715 Stage Fills
JBL VRX932 Balcony Delay
JBL AC28/95
JBL 4870 Auxiliary Deck Fills
JBL 4845 Auxiliary Subs

AMPLIFIERS:

28 Crown I-Tech H12000 HD power all speakers.
Version 6 Presets with Performance Manager console. AES Drive Lines

CONSOLE:

DiGiCo SD8 console with WAVES essential multi-effect package.
Local I/O 8x8 4x4 AES.
Fiber Optic loop with 56x16 Analog I/O SD rack onstage with SD mini rack at FOH with 16 analog outputs 8 Analog inputs, 4 AES inputs and outputs.
56 Channel copper snake with XLR fan out on FOH end and analog split on stage with XLR fan out



MONITOR SYSTEM

MAIN THEATRE

CONSOLE:

Yamaha PM5D console
(24 discrete mixes available)

WEDGE SPEAKERS:

18 – JBL Concert Series Model 4802 (2 way)
2 – 12" speakers
1 – 2" horn

SIDE FILLS:

4 – JBL Concert Series Model 4870 (2 way)
2 – 15" speaker
1 – 2" horn

MICROPHONES:

| <u>Dynamic:</u> | <u>Condenser:</u> |
|--------------------|-----------------------|
| 16 – Shure SM58 | 2 – AKG 414 |
| 10 – Shure SM57 | 2 – Shure SM87 |
| 2 – Shure Beta 52 | 6 – Shure SM81 |
| 9 – Sennheiser 421 | 4 – Shure SM91 |
| 2 – Audix OM-5 | 3 – Audix SCX1 |
| 1 – Audix D6 | 3 – Audio Technica |
| 4 – Audix D2 | Goose Neck Podium Mic |
| 4 – Audix D4 | |

8 - Shure UR2 Wireless hand held with Beta 87 Capsules
8 - Shure UR1 wireless body packs

DIRECT BOX:

14 - Countryman Model 85 (Active)

PAGING:

Dressing rooms, green room and/or front of house

Curtain Schedule

| <u>SIZE</u> | <u>COLOR</u> | <u>MATERIAL</u> | <u>QUANTITY</u> | <u>TYPE</u> |
|-------------|--------------|-----------------|-----------------|-------------|
| 32'H x 14'W | Black | Velour | 6 pairs | Leg |
| 16'H x 70'W | Black | Velour | 5 | Border |
| 30'H x 70'W | Black | Velour | 1 | Backdrop |
| 28'H x 60'W | Black | Velour | 1 | Traveler |
| 30'H x 60'W | Green | Velour | 1 | Act Curtain |
| 30'H x 60'W | Natural | Cloth | 1 | Cyclorama |
| 30'H x 60'W | Black | Sharks Tooth | 1 | Scrim |

ROAD COMPANY PROVISIONS

AUDIO: 1 - 200 amp 3 phase disconnect (isolated earth ground) with cam connectors
1 - 200 amp 3 phase disconnect (isolated earth ground) Stage Left

LIGHTING: 1 - 400 amp 3 phase disconnect company switch with cam connectors
1 - 600 amp 3 phase disconnect company switch

BUS POWER: 3 – Bay each with 2 phase 250 volt, 50 amp receptacles

All electrical service is stage right, audio ONLY stage left (1) 200 amp service. All approximately 25' from proscenium. The building is equipped with one upright electric man lift, having a working height of up to 42'.

FLY SYSTEM

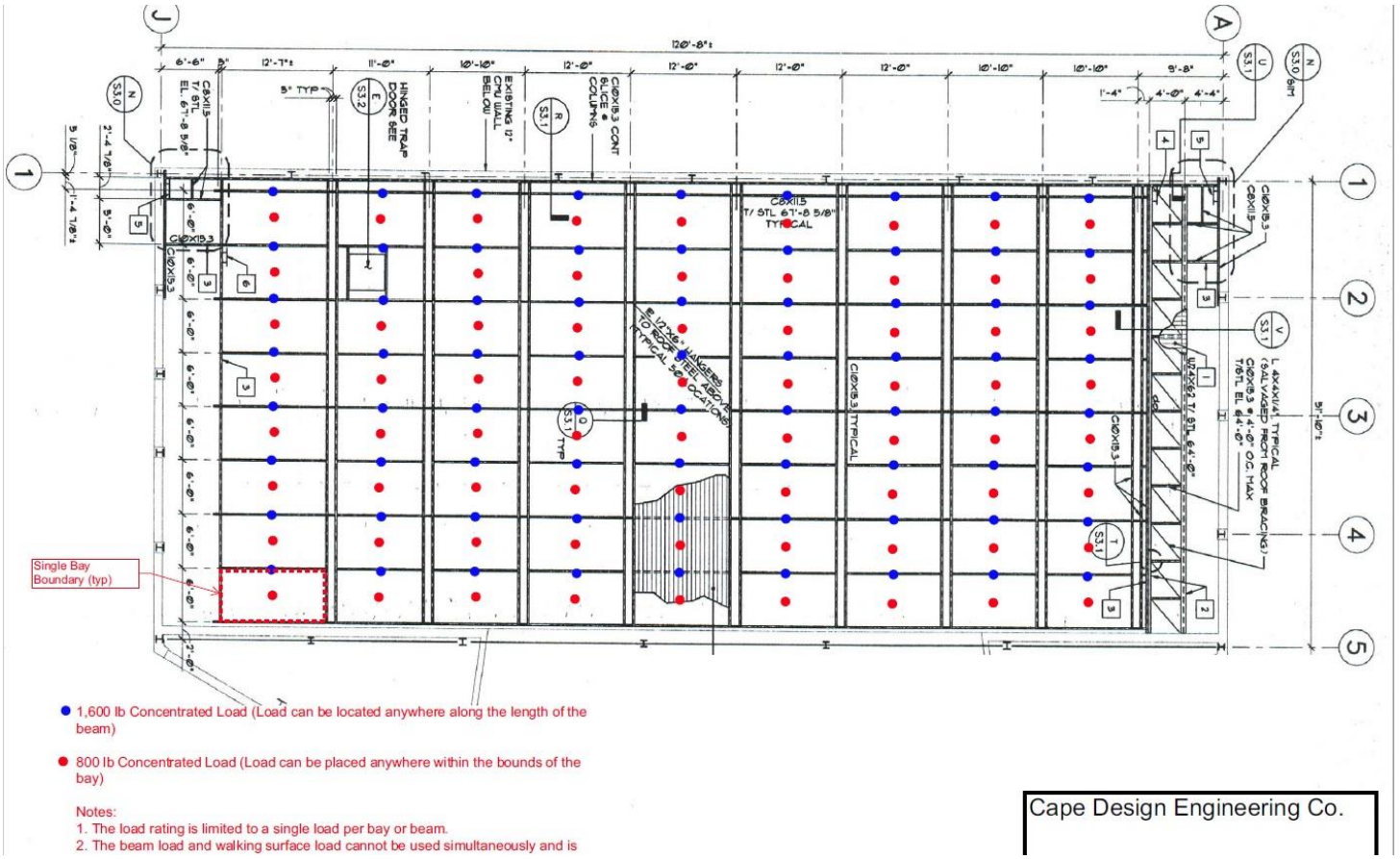
| | |
|----------------------------|-------------|
| Arbor Capacity | 1,500 lbs. |
| Arbor Capacity (Electrics) | 2,000 lbs. |
| Batten low trim | 4' off deck |
| Length of travel | 61' |
| Height to bottom of grid | 67' |
| Height to pin rail | 38'6" |
| Available Weight: | |
| Upstairs: | 11,600 lbs. |
| Downstairs: | 7,950 lbs. |
| Total: | 19,550 lbs. |

| Pipe # | Distance from P.L. | Usage | Comments |
|--------|--------------------|--------------|----------------------|
| A | 0'0" | Valance/F.C. | Not removable |
| B | 0'0" | Fire Curtain | Not removable |
| 1 | 1'2" | Spare | |
| 2 | 1'10" | House Main | Travel or Guillotine |
| 3 | 2'6" | Legs | |
| 4 | 3'2" | Band Shell | Not removable |
| 5 | 3'10" | 1st Electric | HOUSE HANG |
| 6 | 4'6" | Spare | |
| 7 | 5'2" | Spare | |
| 8 | 5'10" | Spare | |
| 9 | 6'6" | Border | |
| 10 | 7'2" | Leg | |
| 11 | 7'10" | Spare | |
| 12 | 8'6" | Spare | |
| 13 | 9'2" | Spare | |
| 14 | 9'10" | Band Shell | Not Removable |
| 15 | 10'6" | Spare | |
| 16 | 11'2" | Border | |
| 17 | 11'10" | Leg (split) | |
| 18 | 12'6" | Leg (split) | |
| 19 | 13'2" | 2nd Electric | |
| 20 | 13'10" | Spare | |
| 21 | 14'6" | Spare | HOUSE HANG |
| 22 | 15'2" | Spare | |
| 23 | 15'10" | Spare | |
| 24 | 16'6" | Spare | |
| 25 | 17'2" | Spare | |
| 26 | 17'10" | Band Shell | Not Removable |
| 27 | 18'6" | Spare | |
| 28 | 19'2" | Spare | |
| 29 | 19'10" | Border | |
| 30 | 20'6" | Leg | |
| 31 | 21'2" | Spare | |
| 32 | 21'10" | 3rd Electric | HOUSE HANG |
| 33 | 22'6" | Spare | |
| 34 | 23'2" | Spare | |
| 35 | 23'10" | Traveler | Track not removable |
| 36 | 24'6" | Spare | |
| 37 | 25'2" | Spare | |
| 38 | 25'10" | Spare | |
| 39 | 26'6" | Spare | |
| 40 | 27'2" | Spare | |
| 41 | 27'10" | Spare | |
| 42 | 28'6" | Border | |
| 43 | 29'2" | Leg | |
| 44 | 29'10" | Spare | |
| 45 | 30'6" | 4th Electric | |
| 46 | 31'2" | Spare | |
| 47 | 31'10" | Spare | HOUSE HANG |
| 48 | 32'6" | Spare | |
| 49 | 33'2" | Spare | |
| 50 | 33'10" | Spare | |
| 51 | 34'6" | 5th Electric | |
| 52 | 35'2" | Spare | |
| 53 | 35'10" | Spare | HOUSE HANG |
| 54 | 36'6" | spare | |
| 55 | 37'2" | Spare | |
| 56 | 37'10" | Spare | |
| 57 | 38'6" | Border | |
| 58 | 39'2" | Leg | |
| 59 | 39'10" | 6th Electric | LED OVATIONS |
| 60 | 40'6" | Spare | |
| 61 | 41'2" | Spare | |
| 62 | 41'10" | Cyc | |
| 63 | 42'6" | Blackout | |

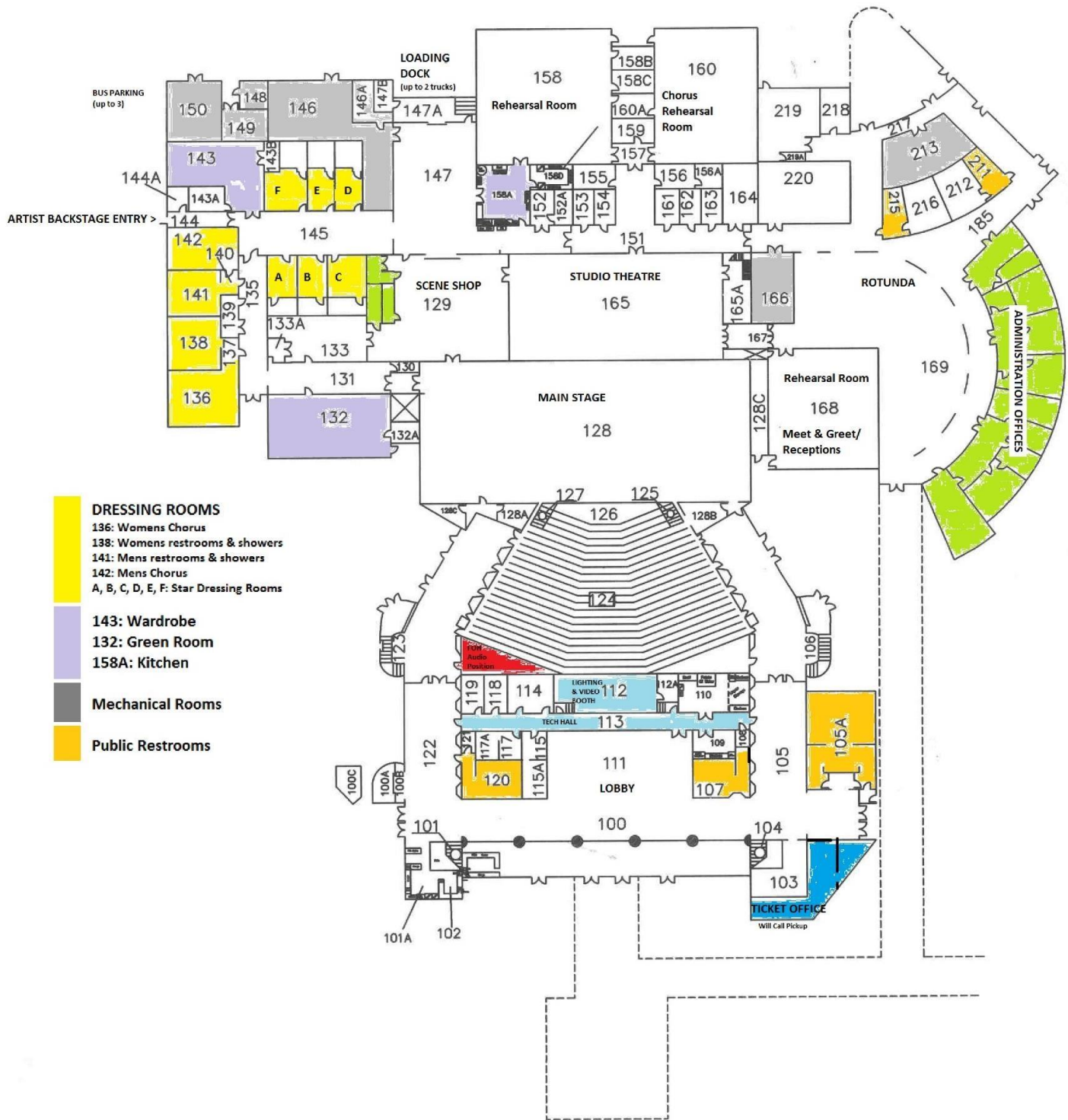
MAIN STAGE GRID IRON

Allowed Uniform Live Load Capacity

A total distributed live load of 20 psi is acceptable.



FACILITY MAP

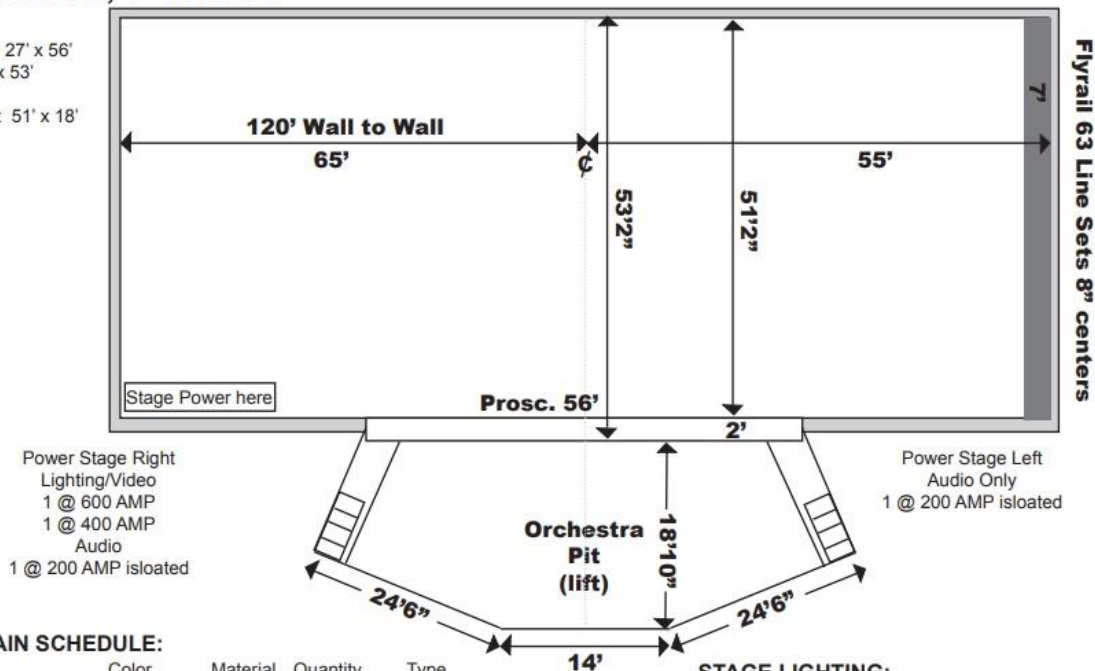


MAIN STAGE MAP

Melbourne, Florida

Stage Map

Proscenium 27' x 56'
Stage 120' x 53'
Apron 2'
Orchestra Pit 51' x 18'



CURTAIN SCHEDULE:

| Size | Color | Material | Quantity | Type |
|---|----------|--------------|----------|-------------|
| 32'H x 14'W | Black | Velour | 6 pairs | Leg |
| 16'H x 70'W | Black | Velour | 5 | Border |
| 30'H x 70'W | Black | Velour | 1 | Backdrop |
| 28'H x 60'W | Black | Velour | 1 | Traveler |
| 30'H x 60'W | Green | Velour | 1 | Act Curtain |
| 30'H x 60'W | Sky Blue | Cloth | 1 | Cyclorama |
| 30'H x 60'W | Black | Sharks Tooth | 1 | Scrim |
| General House Goods Hang (48' Leg to Leg) | | | | |

STAGE LIGHTING:

- Overhead fixtures are 26 Chauvet Par Quad (LED)
10 Martin Mac Quantum Profile (movers).
- FOH Fixtures are all S4-10 degree instruments.
Box boom units are S4-26 degree instruments.
- Spot Lights: 4-Lycian 1.2 kw superstar
- 67' to grid on stage.

Not to Scale
10/2017 DB

FACILITY PARKING MAP

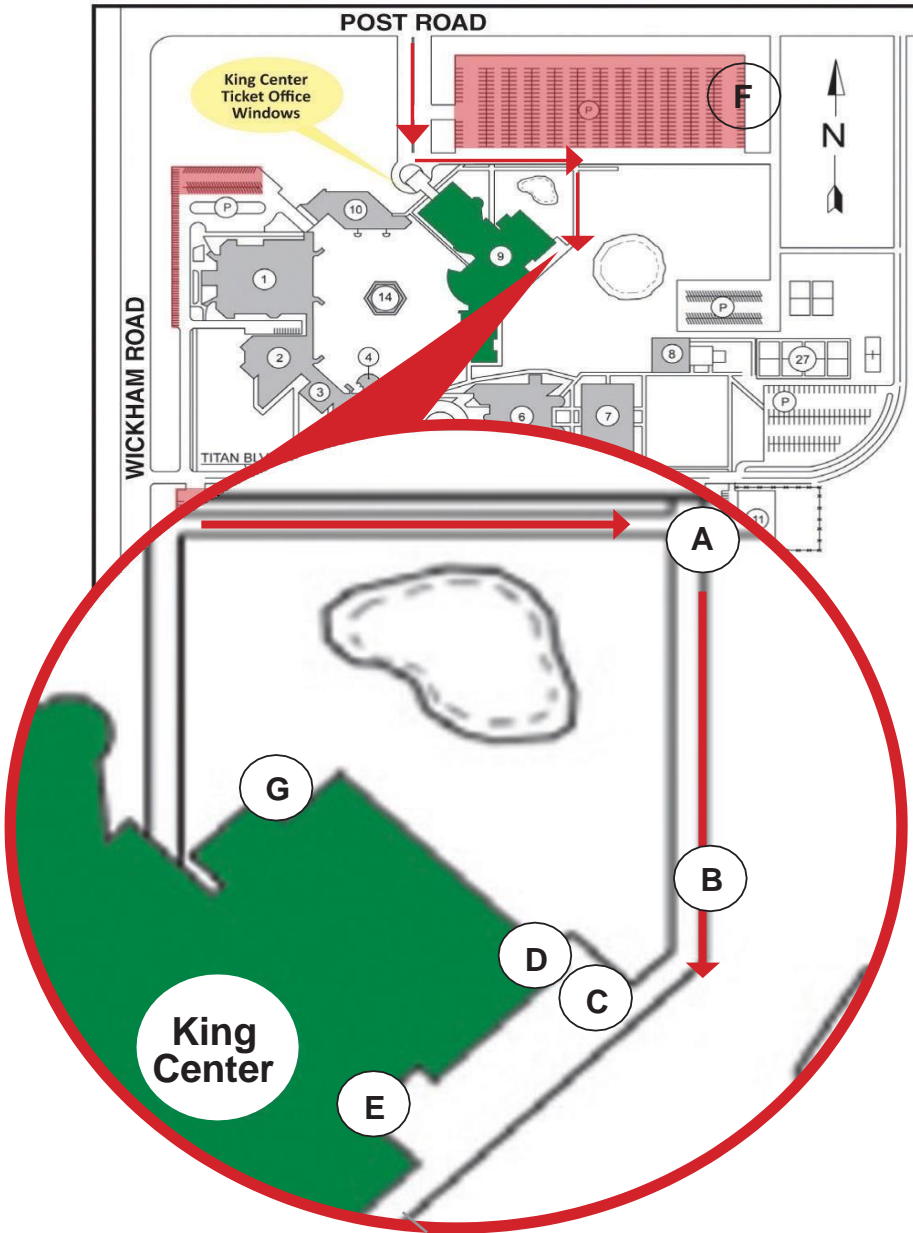
The King Center is located on the corner of Post and Wickham Roads in Melbourne, Florida.

Directions from Interstate 95 Southbound: Take Exit 188/East onto 404 Pineda Causeway Extension toward Satellite Beach/Patrick Air Force Base. At end of exit ramp, turn east (left) onto 404. Continue about 2.5 miles, then turn right onto CR-509/Wickham Road going south for 2 miles. Then turn left onto Post Road. The King Center entrance is on the south side of Post Road (first right).

Directions from Interstate 95 Northbound: Take Exit 188/East onto 404 Pineda Causeway Extension toward Satellite Beach/Patrick Air Force Base. At end of ramp turn right onto 404. Continue about 2.5 miles, then turn right onto CR-509/Wickham Road going south for 2 miles. Then turn left onto Post Road. The King Center entrance is on the south side of Post Road (first right).

Directions from Highway 1 Southbound: Heading south on Hwy1, turn right onto Post Road, continue for approximately 1.5 miles. The King Center entrance is on the south side of Post Road (on the left) just beyond the EFSC Tennis Courts. **Directions from Highway 1 Northbound:** Heading north on Hwy 1, turn left onto Post Road, continue for approximately 1.5 miles. The King Center entrance is on the south side of Post Road (on the left) just beyond the EFSC Tennis Courts.

KING CENTER ENTRANCE



King Center for the Performing Arts
3865 N Wickham Rd
Melbourne, FL 32935

Located on the campus of Eastern
Florida State College, Building 9 (in
green)

- A - Artist/Bus/Truck Entrance
- B - Gate (Code Required)
- C - Artist Bus Parking
- D - Backstage Entrance
- E - Loading Dock
- F - Additional Semi-Truck Parking
- G - Green Room Outside Entrance

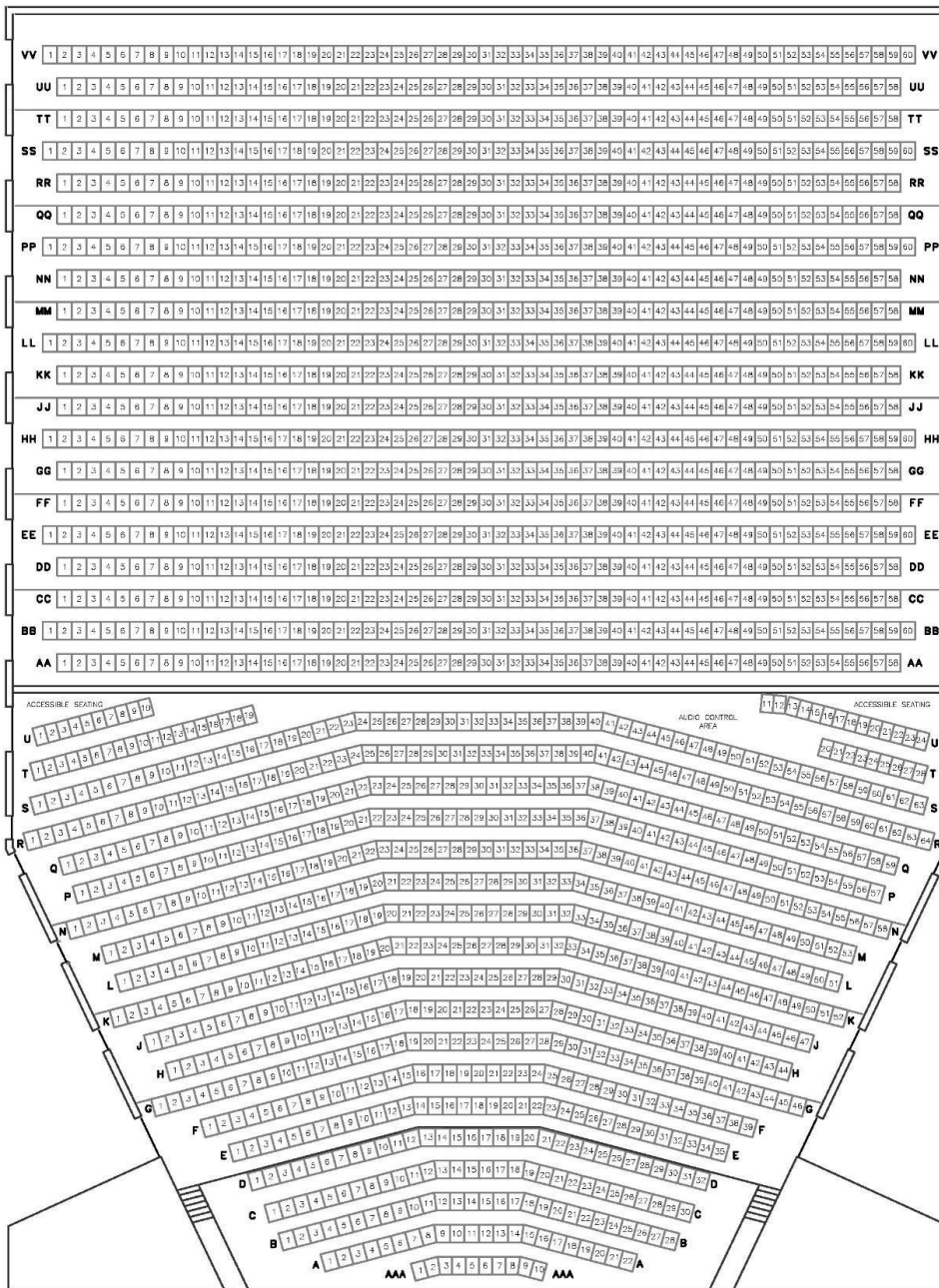
MAIN STAGE SEATING CHART

GRAND TIER

GRAND TIER

ORCHESTRA

ORCHESTRA



Administration - 321.433.5719

Ticket Office - 321.242.2219

FAX - 321.433.5817



www.kingcenter.com
3865 North Wickham Rd. Melbourne, FL 32935

| | |
|---|------|
| Total Seating Capacity | 2016 |
| Orchestra Pit | 122 |
| Orchestra | 720 |
| Grand Tier | 1174 |
| Accessible Seating (included in above numbers) | 74 |

REVISION DATE : 08/2014



STUDIO THEATRE VENUE



GENERAL:

Capacity: 250+/- flexible seating
Dimensions: 45' by 73' (3255 sq. ft.)
Ceiling height: 18' floor to grid (tension wire rope grid)
Direct entrance into scene shop

DIMMING AND CONTROL:

CHAMSYS-Magic Q 40 N Compact console
Circuits: 96

LIGHTING FIXTURES:

6 - Lightronics 5in 1 LED PARS
6 - MH2Martin Wash
6 - ETC 26* LEKO's
20 - 54 – PAR's
18 - Strand 8" Fresnel (1K)
25 - Strand 6" Fresnel (750w)
20 - Scoops (1k)

AUDIO CONSOLE:

Midas M32 Digital Console
Inputs 32 XLR, 8 AUX
Outputs 16 XLR, 1 AES

STAGE BOX:

Midas DL32 Digital Snake – 32 inputs / 16 outputs XLR

MAIN SPEAKERS:

Main hang: JBL Concert Series Model 4850 (2 per side flown)
Main deck: JBL Concert Series Auxiliary Sub Model 4842 (2 per side)
Down fill: JBL Concert Series Model 4825 (2 per side)
Zone control: DBX 4800
Front Fill: JBL Marquis Series Model MS26 (4 across front)

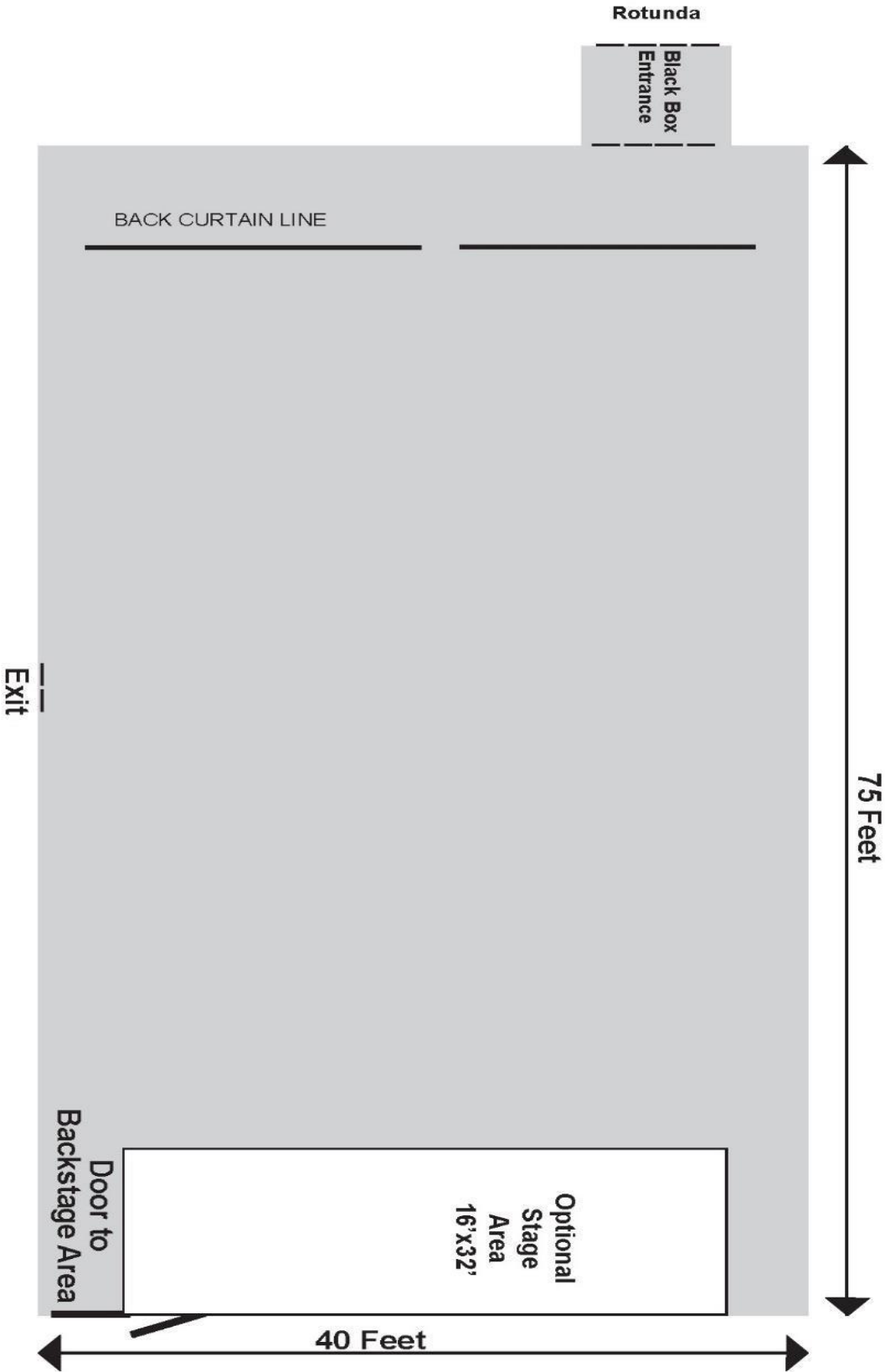
POWER AMPS:

Crown I-Tech 6000 & 4000

MONITOR SPEAKERS:

JBL Concert Series
8 Wedges Model 4802 A (12x12x2)
6 In House Wedge Mixes
All Crossovers for Monitors
BSS FS-318
All AMPS QSX 1500 (1 per cabinet bi-amped)

STUDIO THEATRE MAP



ROTUNDA MAP & DIMENSIONS

