

# TECHNICAL SPECIFICATIONS

Version 1/7/2014

## EKU CENTER FOR THE ARTS

KENTUCKY'S SHOW PLACE

Address (GPS)	1 Hall Drive; SE Corner of Lancaster Ave and Eastern Bypass
Mailing Address	521 Lancaster Avenue, Richmond, Kentucky 40475
Contact	Robert Auchter, Technical Director
Office/Cell/Fax	O: 859.622.7436 C: 919.368.2661 F: 859.622.7299
Email/Website	E: robert.auchter@eku.edu W: www.ekucenter.org
Capacity	1954 plus 88 with pit seating

Loading		Stage		Line Set Schedule	
Dock/Ramp	Dock	Proscenium	58'-6" x 23'-8"		-7'-8" Apron Depth
Location/Size	USL/8' x 10'	Width x Depth	112' x 42'-6"		0'-3" Fire Curtain
Distance to Stage	38' Dock Door to USL	Apron	7'-8"	1	1'-4" Valance
# Trucks @ Dock	1	SR Wing	22' to fly rail	2	2'-0" Curtain
Truck Parking	Back Parking Lot	SL Wing	28'	3	2'-8"
Bus Parking	Ample	Crossover	39'-4" (last line set)	4	4'-0" 1st Electric (Permanent)
Shore Power	Service for 4 busses		Or back hallway	5	5'-0"
Fork Lift/Motor	No/1-ton in Rec'g Dock	Screw into Floor?	Yes	6	6'-8" Shell Ceiling (Permanent)
Storage	Plenty	Main Trav/Guil?	Both	7	8'-0"
Levelers/Plates	Leveler	Break Fire Curtain	No	8	8'-8"
		Orchestra Pit	Gala Lift	9	10'-0"
Rigging		Dressing Rooms		10	10'-8" Screen (Permanent)
Fly System	Single	VIP	2 - SR (short walk)	11	11'-4"
Rail Location	SR (stage level)	Medium	2 - Lower Level (SR)	12	12'-0"
# Line Sets	48	Chorus	2 - Lower Level (CS)	13	12'-8"
Batten Length/Dia	80'/1.5" Sche 80 (1.9"OD)	Wardrobe	1 - Lower Level (SR)	14	13'-4"
Arbor Capacity	2,000 lbs	Washer/Dryer	2/2	15	14'-0"
Available Weight	40,000 lbs	Racks	16	16	14'-8"
Type of Grid	Subway Grating	Irons/Steamers	2/2	17	15'-4"
Point rating	1,500 lbs per point	Showers	VIP/Chorus	18	16'-0"
Grid Height	63'	Elevator/Stairs	USR/USL	19	16'-8"
High Trim	59'	Green Room	USR (Catering/Prod Ofc)	20	18'-0" Shell Ceiling (Permanent)
Sound		Lighting		21	19'-4"
Power (SL)	200 A iso/3-phase (cams)	Power (SL)	1 x 400 A/3-phase (cams)	22	20'-8"
Snake Run	200' - along walls	Power (SL)	1 x 400 A/3-phase (lugs)	23	21'-4"
Mix Position (FOH)	Center, 65' to stage	DMX 1 (House)	SR/FOH/Control Booth	24	22'-0"
Position Size	16' x 8' (share with Lx)	DMX 2 (Open)	SL/SR/FOH/Control Booth	25	22'-8"
Push to FOH?	Service Hallway SR	Lx Position (FOH)	Center, 65' to stage	26	23'-4"
Speakers	KS Audio CPD Line Array	Position Size	16' x 8' (share with audio)	27	24'-0"
FOH Storage	Closet/Service Hallway	Use Smoke/Haze?	Yes	28	24'-8"
Signer Position	House right (can move)	Use open flame	Fire Watch	29	25'-4"
Page	DR/Booth	House Lights	DR/Control Booth/Road Bd	30	26'-0"
		Personnel Lift	JLG 30 AP (30')	31	26'-8"
Hearing Assist	Yes	Followspots	4 x Juliat Topaze (1200W)	32	27'-4"
Soft Goods		Lighting Inventory		33	28'-0"
Valance	1x84'x10', Burgundy, Full			34	29'-4" Shell Ceiling (Permanent)
Main Curtain	2x38'x26', Burgundy, Full	24	5° S4 750W ERS	35	30'-8"
		24	10° S4 750W ERS	36	31'-4"
		8	14° S4 750W ERS	37	32'-0"
Borders	4x68'x10', Black, Flat, 25 oz	56	19° S4 750W ERS	38	32'-8"
		32	26° S4 750W ERS	39	33'-4"
Legs (typical)	8x10'x26', Black, Flat, 25 oz	32	36° S4 750W ERS	40	34'-0"
Legs	10x10'x36', Blk, Flat, 25 oz	62	S4 PAR 750W	41	34'-8"
Legs	6x13'x26', Black, Flat, 16 oz	8	5° S4 Lens Tubes	42	35'-4"
		8	10° S4 Lens Tubes	43	36'-0"
Blackout Curtain	2x38'x26', Black, Full, 25 oz	4	14° S4 Lens Tubes	44	36'-8"
		8	26° S4 Lens Tubes	45	37'-4"
Cyclorama	1x72'x26', Light Blue, s-less	8	36° S4 Lens Tubes	46	38'-0"
White Scrim	1x72'x26', Sharkstooth	8	50° S4 Lens Tubes	47	38'-8"
Black Scrim	1x72'x26', Sharkstooth	8	L&E Cyc Units (4-circuit)	48	39'-4"
					42'-6" Backwall

# EKU CENTER FOR THE ARTS

KENTUCKY'S SHOW PLACE

## Stage Dimensions with Rigging Points

NOT TO SCALE - Drawn for Dimensional Purposes Only

1/7/2014

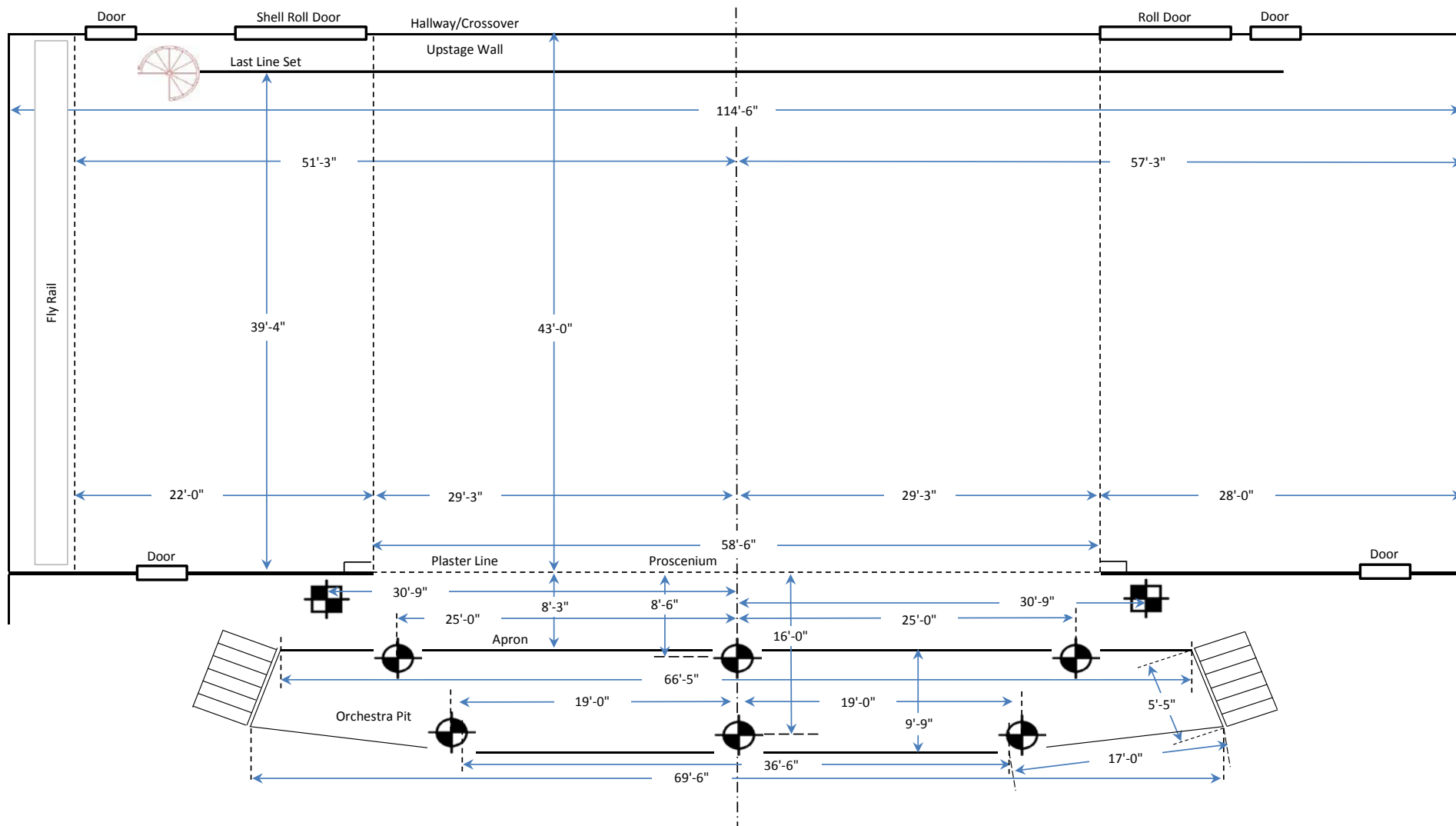
### Key

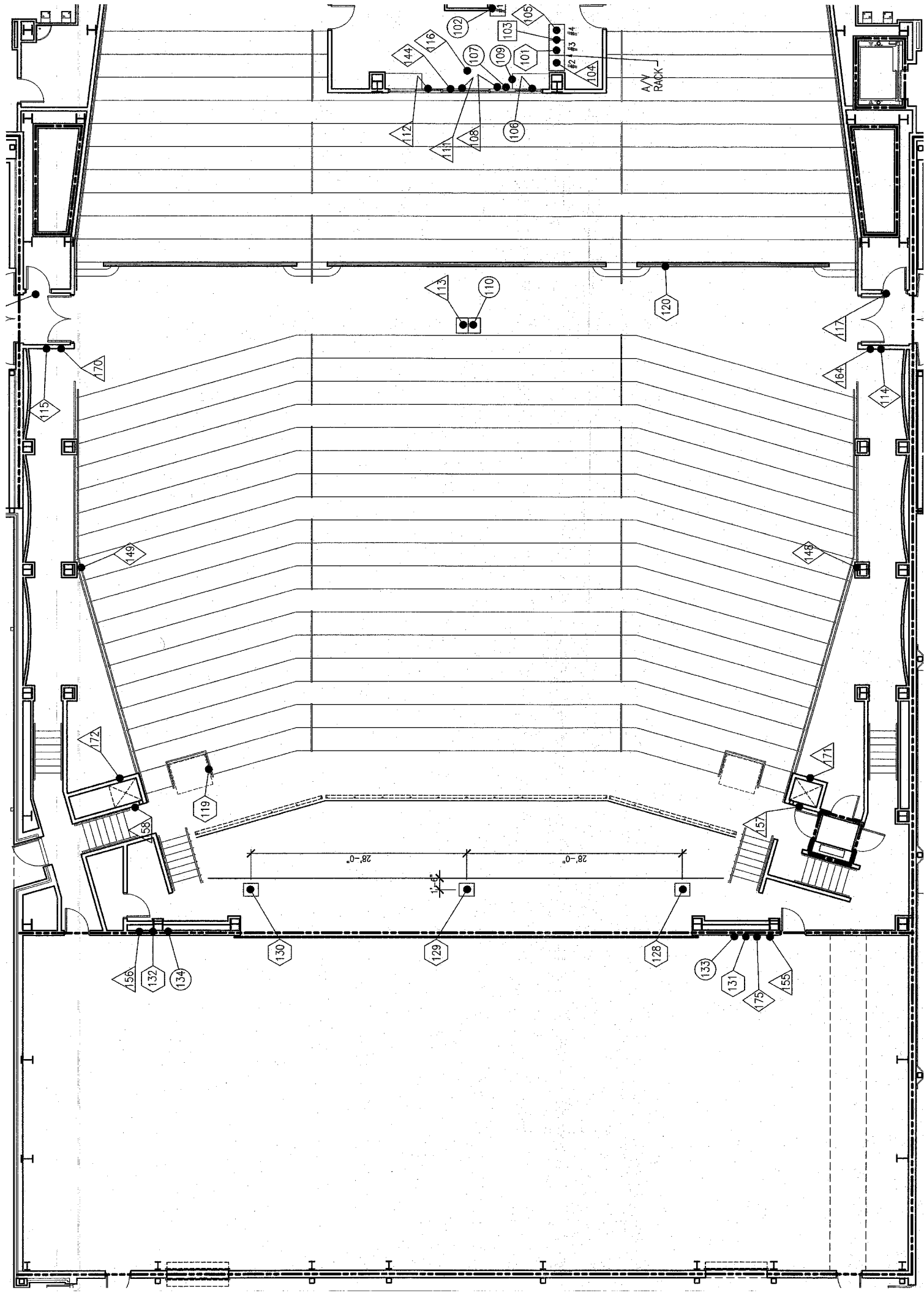


One-ton chain motor



Half-ton chain motor







# EKU Center for the Arts

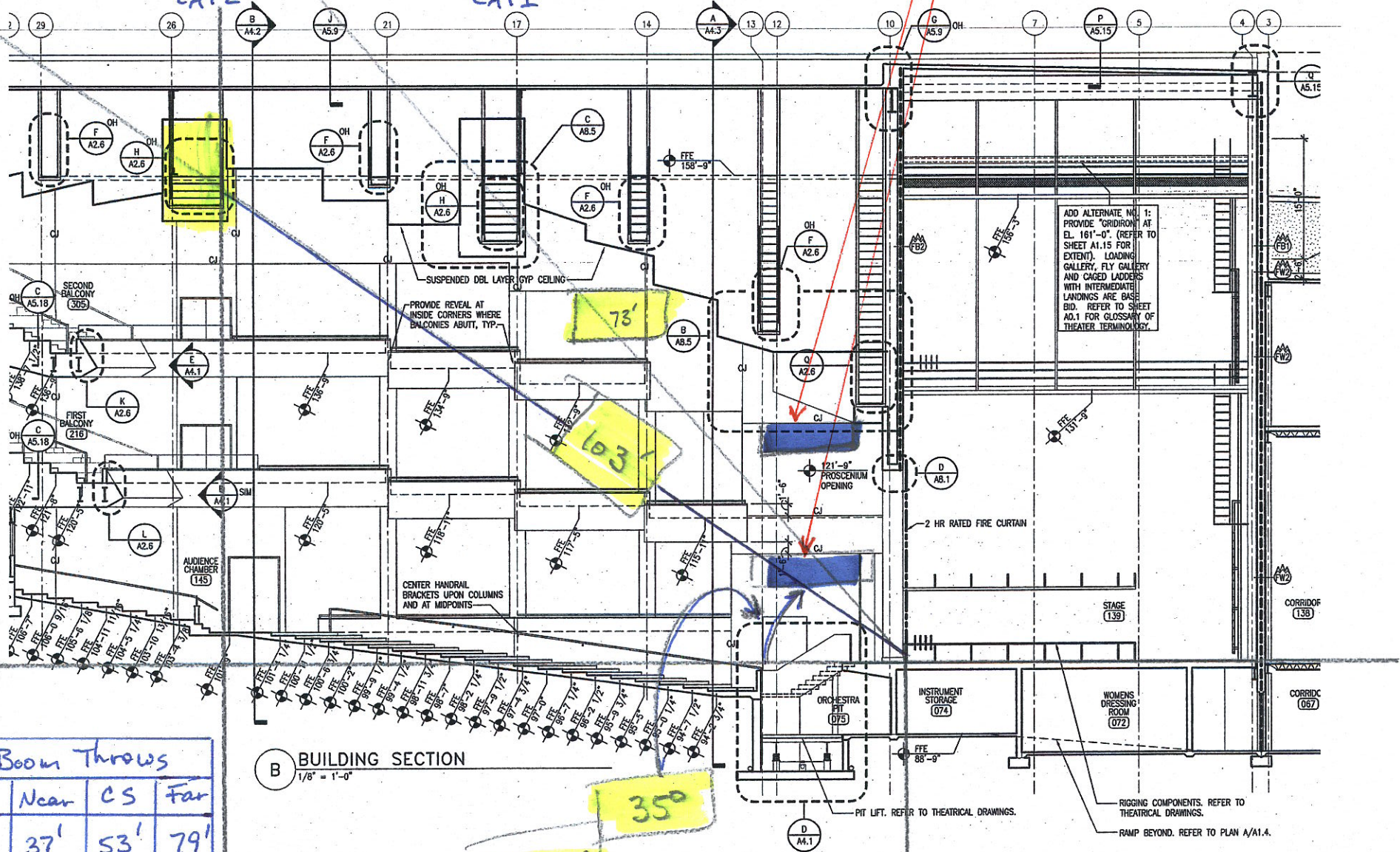
Interim SECTION  
1-7-2013

Above Deck

Box Boom (Upper) - 28' vertical  
Box Boom (Lower) - 12' vertical

FoH2  
CAT2

FoH1  
CAT1

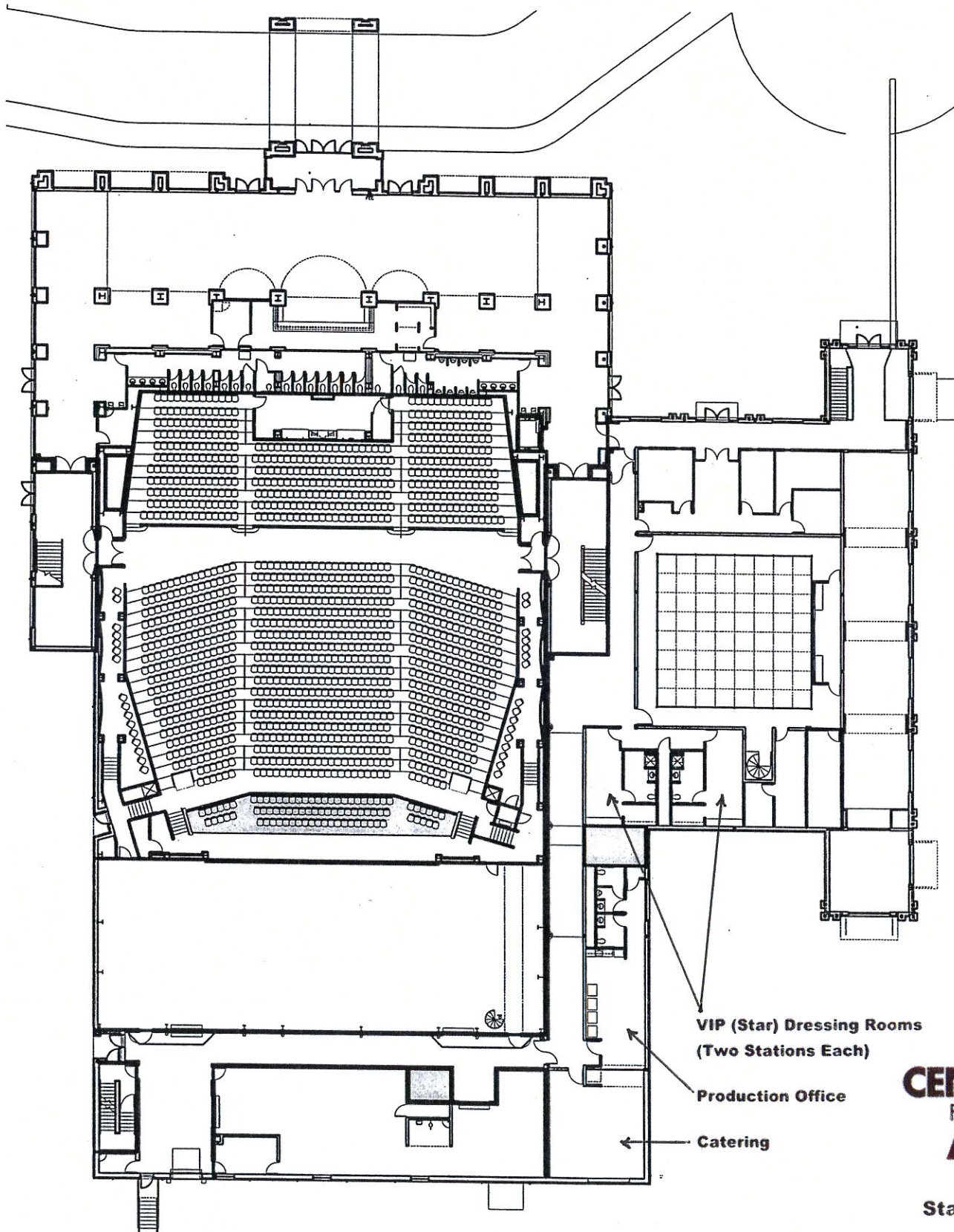


## Box Boom Throws

	Near	CS	Far
Upper	37'	53'	79'
Lower	24'	46'	74'

FoH2  
CAT2





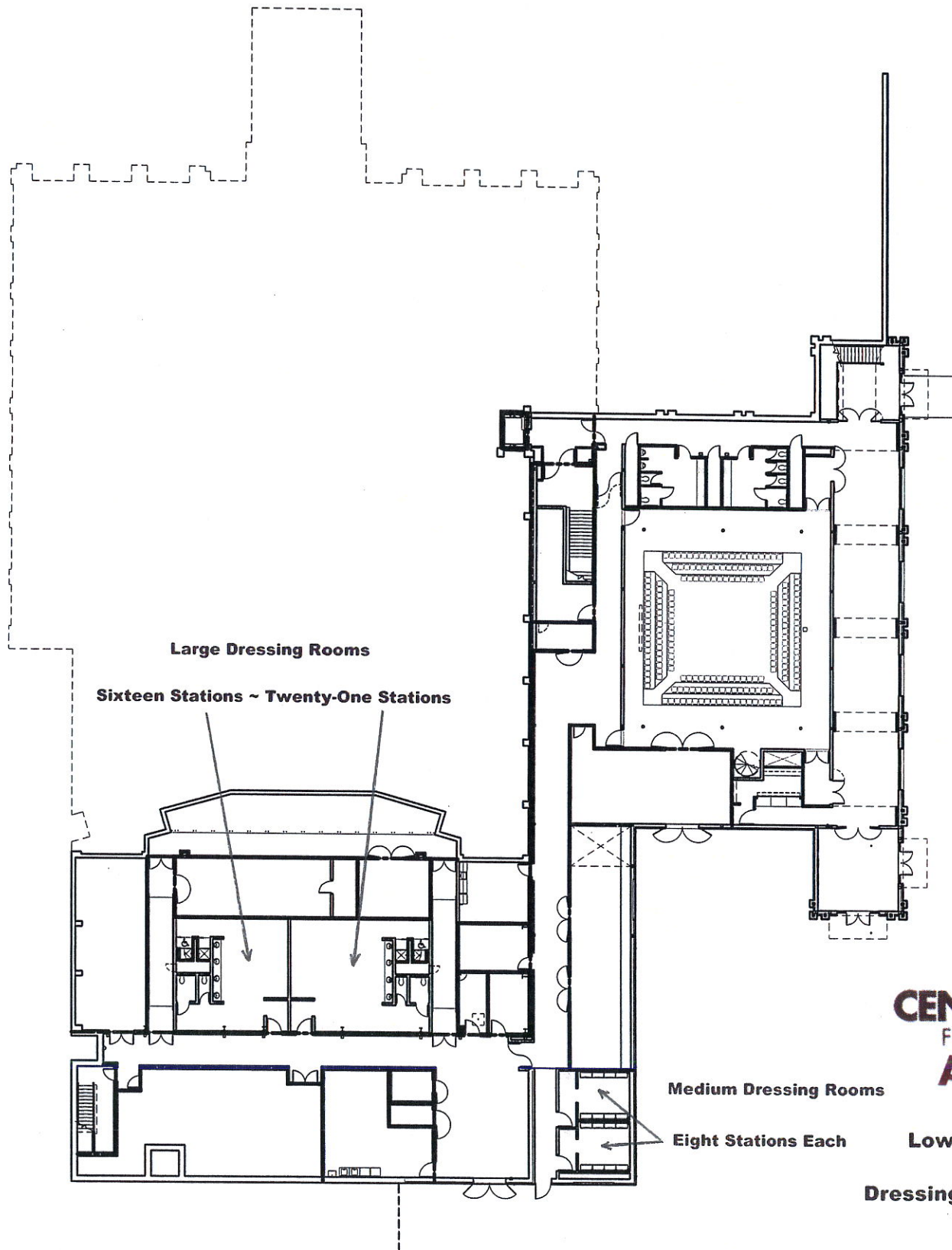
VIP (Star) Dressing Rooms  
(Two Stations Each)

Production Office

Catering

**ECU**  
**CENTER**  
FOR THE  
**ARTS**

Stage Level



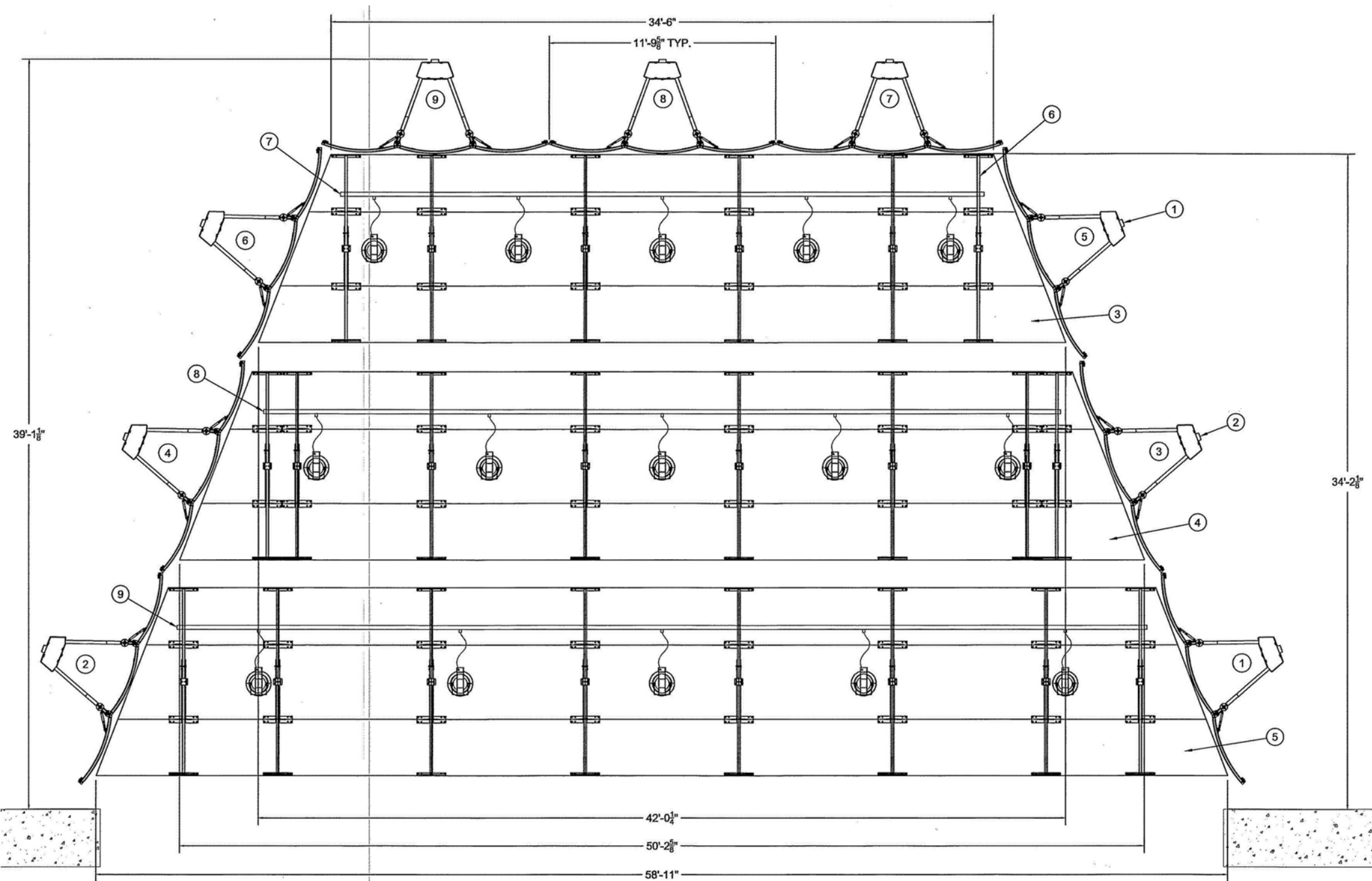
**ECU**  
**CENTER**  
FOR THE  
**ARTS**

Medium Dressing Rooms

Eight Stations Each

Lower Level

Dressing Rooms



A PLAN VIEW OF ACOUSTICAL ENCLOSURE  
 SCALE: 1/4"=1'

